

## Ready to take action?

Our Energy Calculators help you determine how much savings you can expect by choosing energy efficient appliances or simple habit changes like lowering your thermostat. Each savings estimate is tailored by your personal profile.



### Appliance Calc

How much does it cost to run your appliances?



### Lighting Calc

How much can you save using CFL's?



### Thermo Calc

Save simply by adjusting your thermostat. See how!



### Water Heater Calc

How much can you save by replacing your water heater?

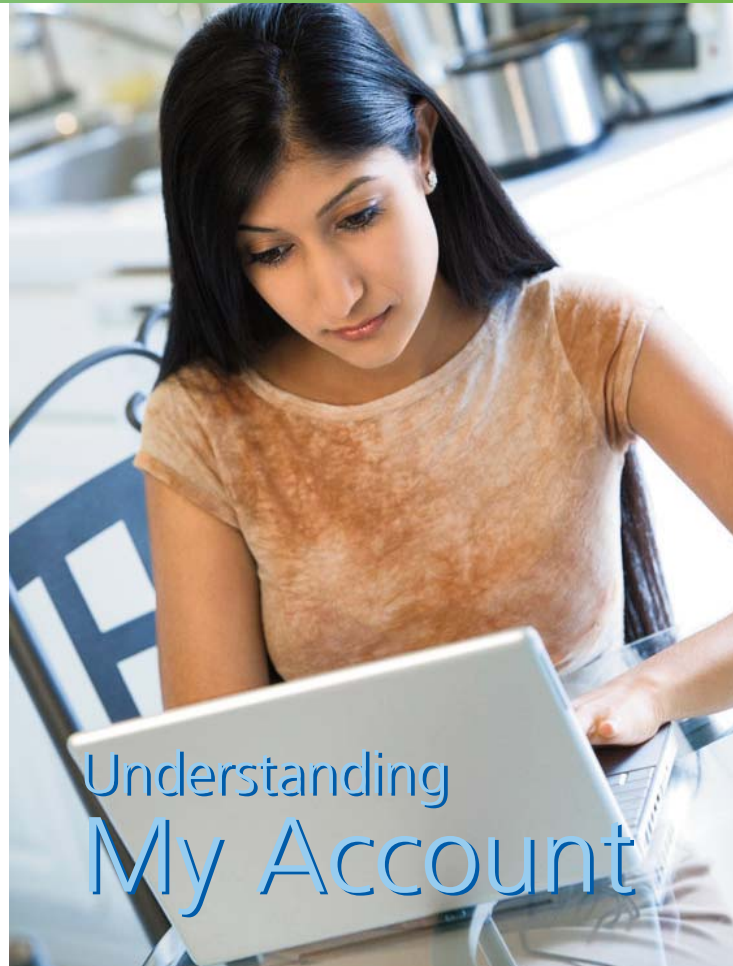
**LOG ON TO MY ACCOUNT AND SELECT CALCULATE IMPROVEMENTS FROM THE TOP MENU AND TRY ALL OF OUR ENERGY CALCULATORS.**

**GET STARTED NOW! HAVE THIS INFORMATION AVAILABLE WHEN YOU'RE READY TO LOG ON:**

- a copy of your Pepco bill
- property details (style, age, number of rooms, square footage of home)
- property features (heating and cooling system types/fuels, water heater fuel)
- household and appliance details (number of people, number and type of appliances)

**VISIT [PEPCO.COM/HOME/BILLING/MYACCOUNT.ASPX](http://PEPCO.COM/HOME/BILLING/MYACCOUNT.ASPX)**

277-11-09.MA.PEPCO



Your life. Plugged in.™

# Learn how you can save on your energy costs with My Account. This easy-to-use, free service is available on our Web site, [pepco.com](http://pepco.com).

Answer a few simple questions about your home, your family and your appliances and My Account will help you monitor your monthly electric and/or gas usage, learn to manage your energy costs, and provide recommendations on how to save based on your personalized energy profile.

How much do I owe? How can I view and pay my bill?

How can I reduce my carbon footprint?

Why has my bill changed from last month?

What do my appliances cost to run? How can I control my energy costs?

How do my energy costs compare to similar homes?

The screenshot displays the 'My Account' website interface with the following sections:

- Navigation:** My Bill, My Home, Find Ways to Save, Calculate Improvements, Learn About Energy.
- Bill Center:** Welcome Back. Account Summary (1234567890). Account status as of 1/1/2010. Last Payment: \$200.00 (Received 12/30/2009 - Thank you!). Account balance: \$200.00. Buttons: View & Pay Bill.
- Bill Summary ending 12/31/2009:** Remaining balance: \$0.00, Total current charges: \$200.00, Amount Due 1/21/2010: \$200.00.
- Bill Highlights:** 100 MAIN ST. The amount due on this bill is based on your budget-billing plan. Your Total Current Charges are \$27.24 lower for this bill than last month's bill. The weather increased your bill by \$15.00 - \$25.00. Your electric usage increased for this bill. This bill contains a correction to electric charges due to previous estimated readings.
- Bill Analysis:** Still have questions about this bill? Find out more about why your bill has changed.
- How does my usage compare?** 100 MAIN ST. Bar chart showing Electric Use (Kwh) for December 2008 (646) and December 2009 (736). Legend: Electric Use, Gas Use.
- How does my home use energy?** 100 MAIN ST. Total Costs 12/1/2009 to 12/31/2009. Pie chart showing: Heating \$48, Hot Water \$46, Lighting \$38, Food Storage \$38, Other \$20, Cooking \$10. Legend: Total, Electricity, Gas.
- Control my costs!** Heating is your highest energy expense. Click Find ways to save to get specific recommendations for reducing your energy costs.
- How does my home compare?** 100 MAIN ST. Total Costs 12/1/2009 to 12/31/2009. Comparison bar chart: My Home (\$200) vs Avg. Home (\$255). Legend: Total, Electricity, Gas.
- Congratulations!** Your home used less energy than most of the similar homes in your area.
- Bill History:** View and graph up to 12 months of information from your bills.

Get started today! Click on "My Account" at [pepco.com](http://pepco.com)