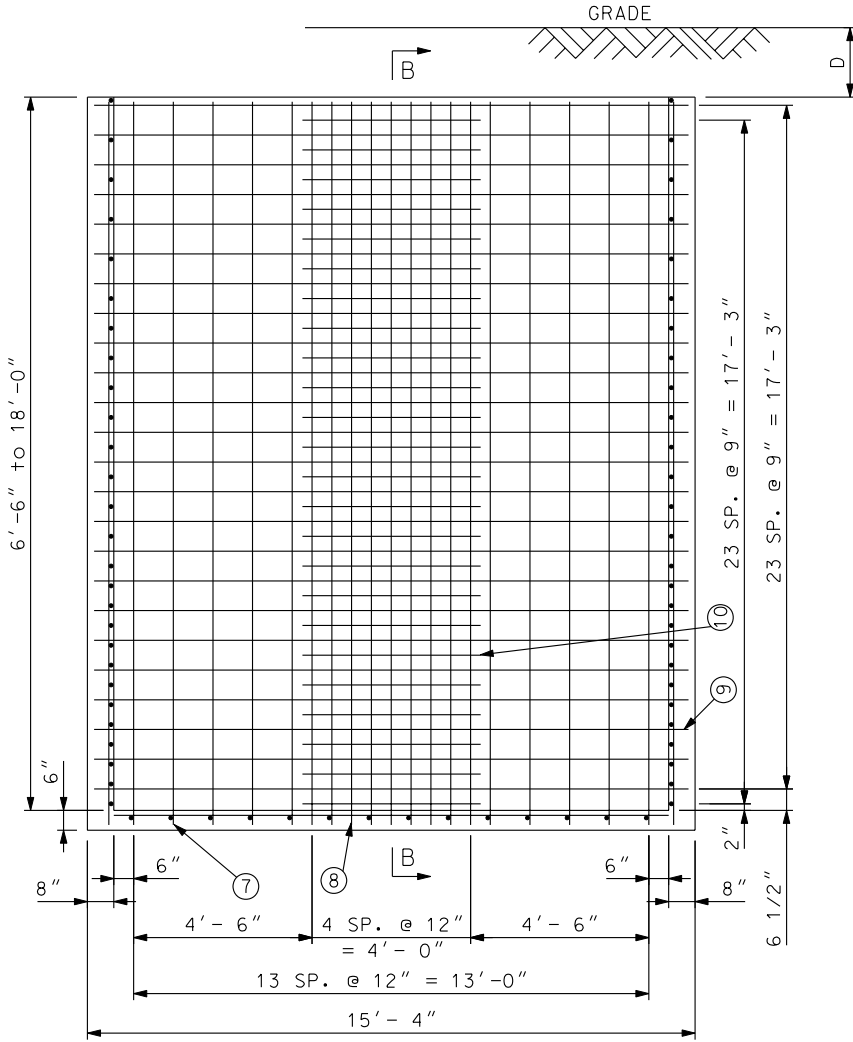
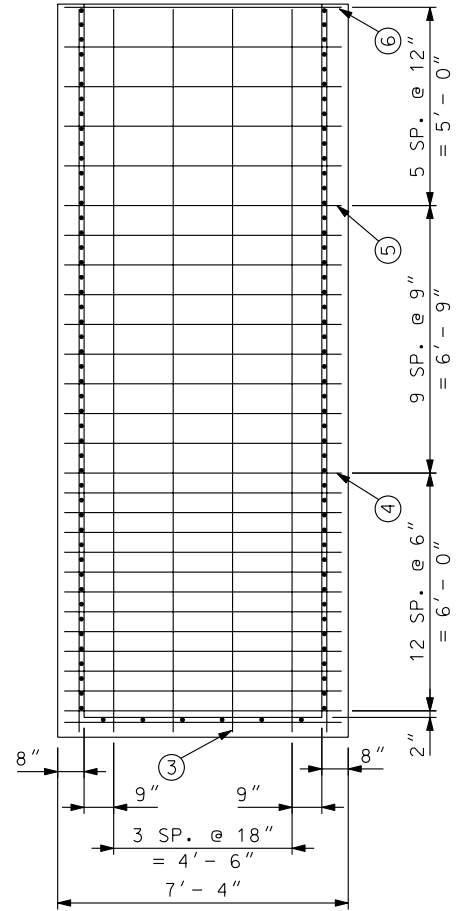


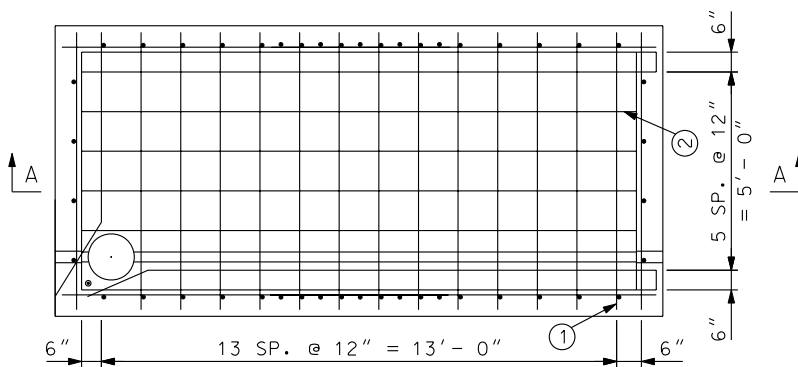
SEE NOTE 1



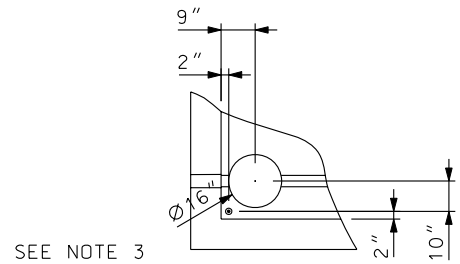
SECTION A - A



SECTION B - B



SECTION C - C



NOTES:

1. THE DISTANCE OF THE SHEETING TO INNER WALL OF MANHOLE IS 1 1/2" ALL AROUND.

DRAWN: DPJ DVLPED: PWL DATE: 11-12-79 REVIEWED:TWM DATE: 10-15-08 APPRVD: MDW DATE: 10-29-08 NEXT REVIEW: 10-11 REV: A



POWER DISTRIBUTION STANDARDS

6'-0" X 14'-0" MANHOLE (CAST IN PLACE)

NOTES:

1. D (FLUSH SDWK.) = 6" MINIMUM
D (FLUSH RDWK.) = 9" MINIMUM.
D (RECESSED SDWK.) = 18" MINIMUM
D (RECESSED RDWK.) = 21" MINIMUM.
2. SP. = SPACES
NUMBERS IN CIRCLE INDICATE RODS IN STEEL SCHEDULE.
3. INSTALL SUMP PUMP PIT, GROUND ROD AND GUTTER ON
L.V. END OF MANHOLE PER DWGS. 2-2-1096 & 2-2-1060
FOR TRANSFORMER MANHOLES.
4. THE TRANSFORMER-TO-BUS TIE CONDUITS SHOULD LEAVE
THE TRANSFORMER MANHOLE (2 HORIZONTAL 3 OR 4
VERTICAL) WITH 3' OF COVER. THE CONDUITS SHOULD
ENTER THE BUS MANHOLE NEAR A CORNER ON THE LONG WALL
WITH THE TOP CONDUITS A MINIMUM OF 3' BELOW THE
CEILING.
5. WHEN INSTALLING MANHOLES END TO END OR SIDE BY SIDE
A MINIMUM OF 1' IS REQUIRED INSIDE WALL TO INSIDE
WALL OF ABUTTING MANHOLES.

| | | | | | | | | |
|------------|-------------|----------------|--------------|----------------|-------------|----------------|-----------------------|--------|
| DRAWN: DPJ | DVLPED: PWL | DATE: 11-12-79 | REVIEWED:TWM | DATE: 10-15-08 | APPRVD: MDW | DATE: 10-29-08 | NEXT REVIEW: 10-11 | REV: B |
|------------|-------------|----------------|--------------|----------------|-------------|----------------|-----------------------|--------|



POWER
DISTRIBUTION
STANDARDS

NOTES FOR
6'-0" X 14'-0" MANHOLE

FLOOR REINFORCING
SCHEDULE

FLOOR (6" THICK)

| ROD NO. | ① | ② |
|----------|-----|-----|
| QUANTITY | 14 | 6 |
| SIZE | #3 | #3 |
| C/C | 12" | 12" |
| LENGTH | 7' | 14' |

CONCRETE SCHEDULE

FLOOR: 56 CU. FT.

WALLS: 28 CU. FT.

MANHOLE WALLS REINFORCING SCHEDULE
(ALL WALLS ARE 8" THICK)

| ROD NO. | ③ | ④ | ⑤ | ⑥ | ⑦ | ⑧ | ⑨ | ⑩ |
|----------|-------------|---|----|-----|----------|----------|-----|---------|
| DEPTH | 6' - 6" DC | | | | | | | |
| QUANTITY | 8 | - | 2 | 12 | 28 | 10 | 18 | - |
| SIZE | #4 | - | #5 | #4 | #5 | #4 | #6 | - |
| C/C | 18" | - | 9" | 12" | 12" | 12" | 9" | - |
| LENGTH | 6' - 9" | - | 7' | 7' | 6' - 9" | 6' - 9" | 15' | - |
| DEPTH | 8' - 0" DC | | | | | | | |
| QUANTITY | 8 | - | 6 | 12 | 24 | 10 | 22 | - |
| SIZE | #4 | - | #5 | #4 | #5 | #4 | #6 | - |
| C/C | 18" | - | 9" | 12" | 12" | 12" | 9" | - |
| LENGTH | 8' - 3" | - | 7' | 7' | 8' - 3" | 8' - 3" | 15" | - |
| DEPTH | 9' - 0" DC | | | | | | | |
| QUANTITY | 8 | - | 10 | 12 | 28 | 10 | 24 | - |
| SIZE | #4 | - | #5 | #4 | #5 | #4 | #6 | - |
| C/C | 18" | - | 9" | 12" | 12" | 12" | 9" | - |
| LENGTH | 9' - 3" | - | 7' | 7' | 9' - 3" | 9' - 3" | 15' | - |
| DEPTH | 10' - 0" DC | | | | | | | |
| QUANTITY | 8 | - | 12 | 12 | 28 | 10 | 28 | - |
| SIZE | #4 | - | #5 | #4 | #5 | #4 | #6 | - |
| C/C | 18" | - | 9" | 12" | 12" | 12" | 9" | - |
| LENGTH | 10' - 3" | - | 7' | 7' | 10' - 3" | 10' - 3" | 15' | - |
| DEPTH | 11' - 0" DC | | | | | | | |
| QUANTITY | 8 | - | 14 | 12 | 28 | 10 | 18 | 28 |
| SIZE | #4 | - | #5 | #4 | #5 | #4 | #6 | #4 |
| C/C | 18" | - | 9" | 12" | 12" | 12" | 9" | 9" |
| LENGTH | 11' - 3" | - | 7' | 7' | 11' - 3" | 11' - 3" | 15' | 4' - 6" |

(CONTINUED ON SHEET 4 OF 6)

DRAWN: DPJ DVLPEP: PWL DATE: 11-12-79 REVIEWED: TWM DATE: 10-15-08 APPRVD: MDW DATE: 10-29-08 NEXT REVIEW: 10-11 REV: A



POWER
DISTRIBUTION
STANDARDS

REINFORCEMENT FOR
6' X 14' MANHOLE

MANHOLE WALLS REINFORCING SCHEDULE
(ALL WALLS ARE 8" THICK)

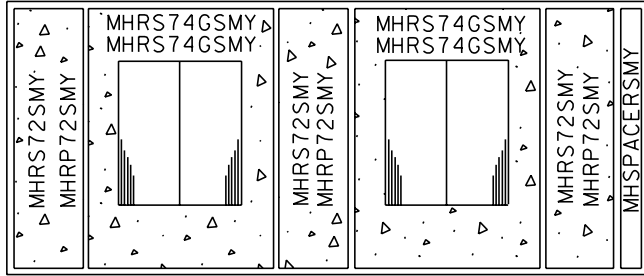
| ROD NO. | ③ | ④ | ⑤ | ⑥ | ⑦ | ⑧ | ⑨ | ⑩ |
|----------|-------------|----|----|-----|----------|----------|-----|---------|
| DEPTH | 12' - 0" DC | | | | | | | |
| QUANTITY | 8 | - | 18 | 12 | 28 | 10 | 32 | 32 |
| SIZE | #4 | - | #5 | #4 | #5 | #4 | #6 | #4 |
| C/C | 18" | - | 9" | 12" | 12" | 12" | 9" | 9" |
| LENGTH | 12' - 3" | - | 7' | 7' | 12' - 3" | 12' - 3" | 15' | 4' - 6" |
| DEPTH | 13' - 0" DC | | | | | | | |
| QUANTITY | 8 | 4 | 18 | 12 | 28 | 10 | 36 | 34 |
| SIZE | #4 | #5 | #5 | #4 | #5 | #4 | #6 | #4 |
| C/C | 18" | 6" | 9" | 12" | 12" | 12" | 9" | 9" |
| LENGTH | 13' - 3" | 7' | 7' | 7' | 13' - 3" | 13' - 3" | 15' | 4' - 6" |
| DEPTH | 14' - 0" DC | | | | | | | |
| QUANTITY | 8 | 8 | 18 | 12 | 24 | 10 | 38 | 36 |
| SIZE | #4 | #5 | #5 | #4 | #5 | #4 | #6 | #4 |
| C/C | 18" | 6" | 9" | 12" | 12" | 12" | 9" | 9" |
| LENGTH | 14' - 3" | 7' | 7' | 7' | 14' - 3" | 14' - 3" | 15' | 4' - 6" |
| DEPTH | 15' - 0" DC | | | | | | | |
| QUANTITY | 8 | 12 | 18 | 12 | 24 | 10 | 40 | 40 |
| SIZE | #4 | #5 | #5 | #4 | #5 | #4 | #6 | #4 |
| C/C | 18" | 6" | 9" | 12" | 12" | 12" | 9" | 9" |
| LENGTH | 15' - 3" | 7' | 7' | 7' | 15' - 3" | 15' - 3" | 15' | 4' - 6" |
| DEPTH | 16' - 0" DC | | | | | | | |
| QUANTITY | 8 | 16 | 18 | 12 | 28 | 10 | 44 | 42 |
| SIZE | #4 | #5 | #5 | #4 | #5 | #4 | #6 | #4 |
| C/C | 18" | 6" | 9" | 12" | 12" | 12" | 9" | 9" |
| LENGTH | 16' - 3" | 7' | 7' | 7' | 16' - 3" | 16' - 3" | 15' | 4' - 6" |
| DEPTH | 17' - 0" DC | | | | | | | |
| QUANTITY | 8 | 20 | 18 | 12 | 28 | 10 | 46 | 44 |
| SIZE | #4 | #5 | #5 | #4 | #5 | #4 | #6 | #4 |
| C/C | 18" | 6" | 9" | 12" | 12" | 12" | 9" | 9" |
| LENGTH | 17' - 3" | 7' | 7' | 7' | 17' - 3" | 17' - 3" | 15' | 4' - 6" |
| DEPTH | 18' - 0" DC | | | | | | | |
| QUANTITY | 8 | 24 | 18 | 12 | 28 | 10 | 48 | 48 |
| SIZE | #4 | #5 | #5 | #4 | #5 | #4 | #6 | #4 |
| C/C | 18" | 6" | 9" | 12" | 12" | 12" | 9" | 9" |
| LENGTH | 18' - 3" | 7' | 7' | 7' | 18' - 3" | 18' - 3" | 15' | 4' - 6" |

DRAWN: DPJ | DVLPED: PWL | DATE: 11-12-79 | REVIEWED: TWM | DATE: 10-15-08 | APPRVD: MDW | DATE: 10-29-08 | NEXT REVIEW: 10-11 | REV: A

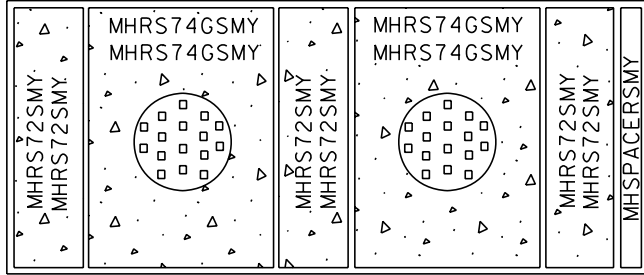


POWER
DISTRIBUTION
STANDARDS

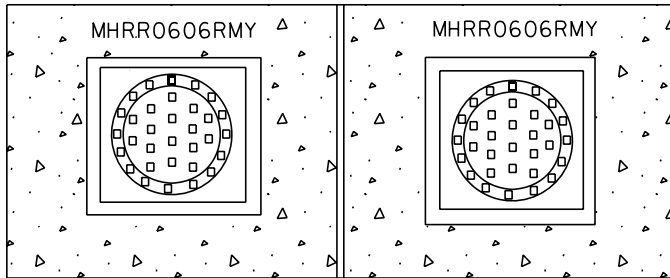
REINFORCEMENT FOR
6' X 14' MANHOLE



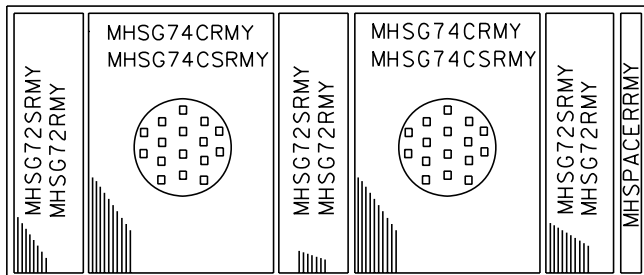
MH0614VS
MH0614VPS (SEE NOTE 2)



MH0614S MH0614SFPS
MH0614PS MH0614SFPS (SEE NOTE 2)



MH0614RR



MH0614VR
MH0614VRS (SEE NOTE 1)

NOTES:

1. ENGINEERING ASSEMBLE MH0614VRS SHALL BE CALLED FOR WHEN A ROADWAY MANHOLE IS TO BE LOCATED IN THE SIDEWALK. COMPATIBLE UNITS MHSG74CRMY AND MHSG72RMY ARE REPLACED BY MHSG74CSRMY AND MHSG72SRMY FOR ENGINEERING ASSEMBLE MH0614VRS.
2. WHEN ENGINEERING ASSEMBLIES MH0614VPS, MH0614PS OR MH0614SFPS ARE REQUIRED THE SIDEWALK SLABS ARE REPLACED WITH THE PAVER PANS OF THE CORRESPONDING CONSTRUCTION.



ENGINEERING ASSEMBLY BREAKDOWN FOR 6'-0" X 14'-0" MANHOLES

| QUANTITY | | | | | | | DESIGNATION | DESCRIPTION | REF. DWG. | STOCK NO. |
|-------------|---|---|---|---|---|---|-------------|--------------------------------------|-----------|-----------|
| 2 | 2 | 2 | 2 | 2 | 2 | 2 | MHC28MY | MH COVER 28" ML CO | 2-2-0431 | 9721-0637 |
| | | | | | | | MHDACMY | MH DBL ACT COVER ML CO | 2-2-0434 | 9721-0640 |
| | | | | | | | MHDAFRMY | MH DBL ACT COVER FR RDWY ML CO | 2-2-0427 | 9721-0611 |
| | | | 1 | | 1 | | MHRF0614RMY | MH RF FRAME 6X14 RDWY ML CO | 2-2-1164 | - |
| 1 | 1 | 1 | 1 | | | 1 | MHRF0614SMY | MH RF FRAME 6'X14 SDWK ML CO | 2-2-1184 | 9721-0208 |
| | | | | | | 1 | MHRR0606RMY | MH RECESSED ROOF 6X6 RDWY ML CO | 2-2-1141 | 9721-0564 |
| | | | | | | 1 | MHRR0608RMY | MH RECESSED ROOF 6X8 RDWY ML CO | 2-2-1143 | 9721-0565 |
| | | 3 | | | | 3 | MHRS72SMY | MH RF SLAB 7X2 SDWK ML CO | 2-2-1177 | 9721-0648 |
| | | 2 | | | | 2 | MHRS74CSMY | MH RF SLAB 7X4 SAC SDWK ML CO | 2-2-1327 | 9721-0662 |
| | | | | | | 2 | MHRS74GSMY | MH RF SLAB 7X4 DR GRT SDWK ML CO | 2-2-1327 | 9721-0663 |
| 3 | 3 | 3 | | | | | MHRP72SMY | MH RF SLAB PAN 7X2 SDWK ML CO | 2-2-1177 | 9721-0214 |
| 2 | 2 | | | | | | MHRP74CSMY | MH RF SLAB PAN 7X4 SAC SDWK ML CO | 2-2-1327 | 9721-0223 |
| | | | 2 | | | | MHRP74GSMY | MH RF SLAB PAN 7X4 DRGRT SDWK ML CO | 2-2-1327 | 9721-0221 |
| | | | | 3 | | | MHSG72SRMY | MH SLAB GRT 7X2 SP RDWY ML CO | 2-2-1163 | 9721-0238 |
| | | | | | 3 | | MHSG72RMY | MH SLAB GRT 7X2 RDWY ML CO | 2-2-1163 | 9721-0620 |
| | | | | 2 | | | MHSG74CSRMY | MH SLAB GRT 7X4 SAC SP RDWY ML CO | 2-2-1351 | 9721-0659 |
| | | | | | 2 | | MHSG74CRMV | MH SLAB GRT 7X4 SAC RDWY ML CO | 2-2-1351 | 9721-0658 |
| | | | 1 | | 1 | | MHSPACERRMY | MH SPACER FOR RDWY MH ML CO | 2-5-1386 | 9721-0668 |
| 1 | 1 | 1 | 1 | | | 1 | MHSPACERSMY | MH SPACER FOR SDWK MH ML CO | 2-5-1386 | 9721-0669 |
| 1 | 1 | | | | 1 | | MHO614MY | MH 6X14X6.5 DC ML CO | 2-2-0333 | - |
| | | 1 | 1 | 1 | 1 | 1 | MHO614VMY | MH 6X14X10 DC ML CO | 2-2-0333 | - |
| DESCRIPTION | | | | | | | | | | |
| | | | | | | | MHO614VS | MH 6X14 VENT SDWK TYPE | | |
| | | | | | | | MHO614SFS | MH 6X14 SWITCH/FUSE SDWK TYPE | | |
| | | | | | | | MHO614VR | MH 6X14 VENT RDWY TYPE | | |
| | | | | | | | MHO614RR | MH 6X14 RECESSED RDWY TYPE | | |
| | | | | | | | MHO614VRS | MH 6X14 VENT RDWY FOR SDWK TYPE | | |
| | | | | | | | MHO614VPS | MH 6X14 VENT PAVERS SDWK TYPE | | |
| | | | | | | | MHO614SFPS | MH 6X14 SWITCH/FUSE PAVERS SDWK TYPE | | |
| | | | | | | | MHO614S | MH 6X14 SDWK TYPE | | |
| | | | | | | | MHO614PS | MH 6X14 PAVERS SDWK TYPE | | |

DRAWN: DPJ | DVLPED: CEG | DATE: 12-15-00 | REVIEWED: TWM | DATE: 10-15-08 | APPRVD: MDW | DATE: 10-29-08 | NEXT REVIEW: 10-11 | REV: A



POWER
DISTRIBUTION
STANDARDS

6'X14' MH ENGINEERING
ASSEMBLIES BREAKDOWN