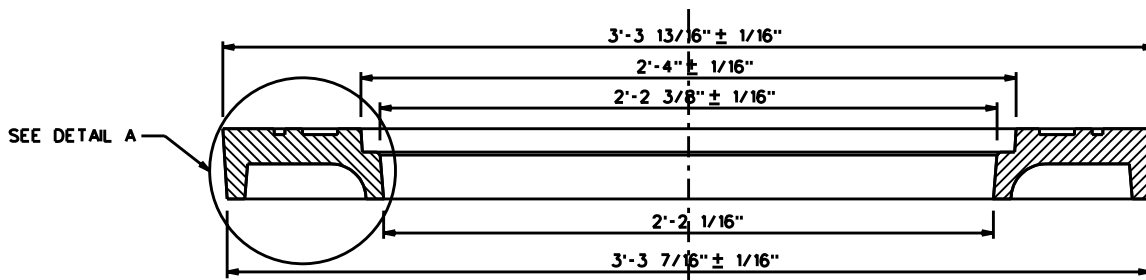
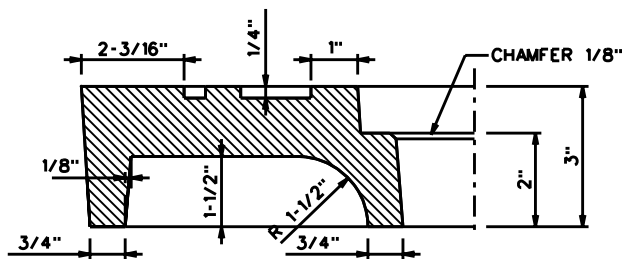


TOP VIEW



SECTION A-A



DETAIL A

NOTES:  
 SEE PAGE 2  
 REV C: CHANGED DWG FORMAT.

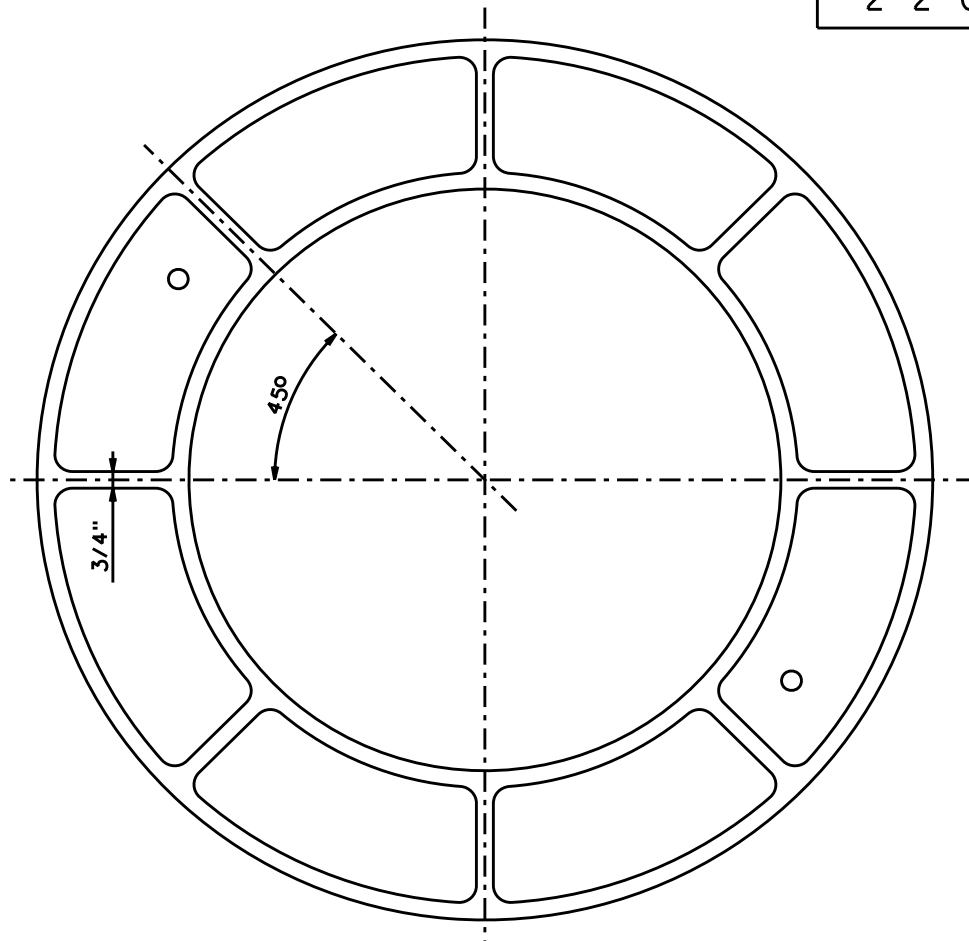
DRAWN: AVI	DVLPED: GBT	DATE: 03-17-88	REVIEWED: CEG	DATE: 12-17-90	APPRVD: MDW	DATE: 02-21-08	NEXT REVIEW: 02-11	REV: C
------------	-------------	----------------	---------------	----------------	-------------	----------------	--------------------	--------



POWER  
 DISTRIBUTION  
 STANDARDS

40" MANHOLE RING  
 COVER

2-2-0434.2.2



BOTTOM VIEW

- 1: ALL CASTING SHALL CONFORM TO STANDARD SPECIFICATIONS FOR GRAY IRON CASTINGS A.S.T.M. DESIGNATION A-48 OR LATEST REVISIONS.
- 2: STOCK NO. 9721-0640 SHALL APPEAR ON THE CASTING. APPROXIMATE WEIGHT 340 LBS.
- 3: S MACHINE FINISHED.
- 4: EACH CASTING SHALL BE IDENTIFIED WITH THE MANUFACTURER'S NAME OR LOGO
- 5: CASTINGS SHALL BE FREE FROM SAND OR BLOW HOLES AND SHARP EDGES.
- 6: WITH EXCEPTION ONLY TO ANY NOTED TOLERANCES, NO DIMENSION SHALL EXCEED  $\pm 1/16''$  / FT.
- 7: MANUFACTURER SHALL VERIFY THAT THE RING COVER IS DESIGNED FOR H2O LOADING.
- 8: SEE DWG. • 2-2-0431 FPR 28" ROADWAY MANHOLE COVER.

COMPATIBLE UNIT 40" MANHOLE RING COVER			
QUANTITY	STOCK*	DESCRIPTION	
1	9721-0640	MH, RING COVER 40"	EA
1	9721-0637	MH, COVER RDWY 28"	EA
		DESIGNATION	
MHDACMY		MH DA COVER 40" W/RING ML 33KV	

REV C: CHANGED DWG FORMAT.

DRAWN: AVI	DVL PED: GBT	DATE: 03-17-88	REVIEWED: CEG	DATE: 12-17-90	APPRVD: MDW	DATE: 02-21-08	NEXT REVIEW: 02-11	REV: C
------------	--------------	----------------	---------------	----------------	-------------	----------------	--------------------	--------



POWER  
DISTRIBUTION  
STANDARDS

40" MANHOLE RING  
COVER