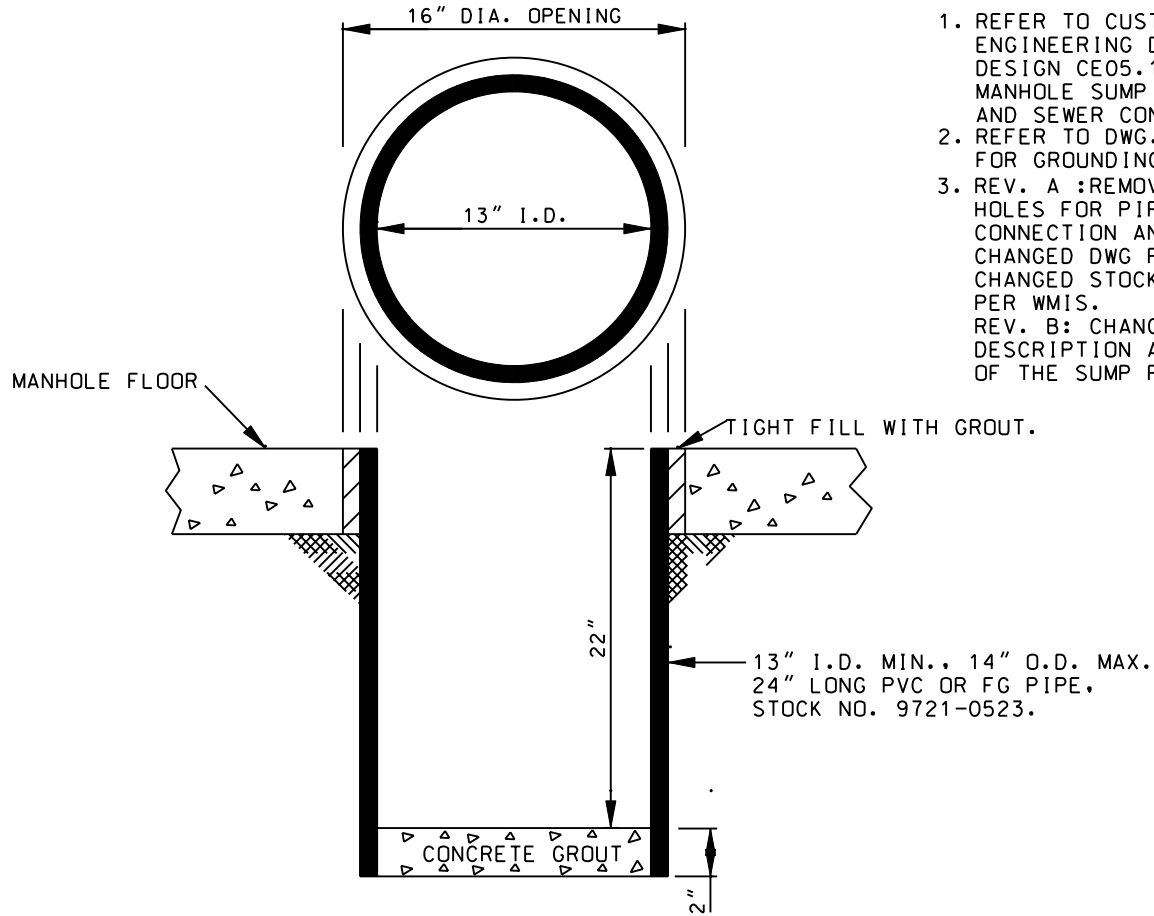
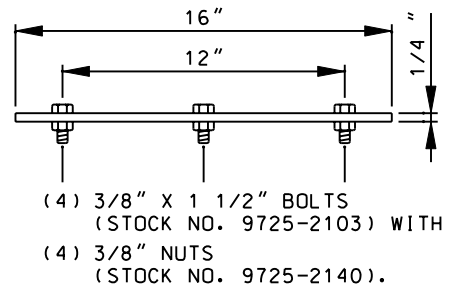
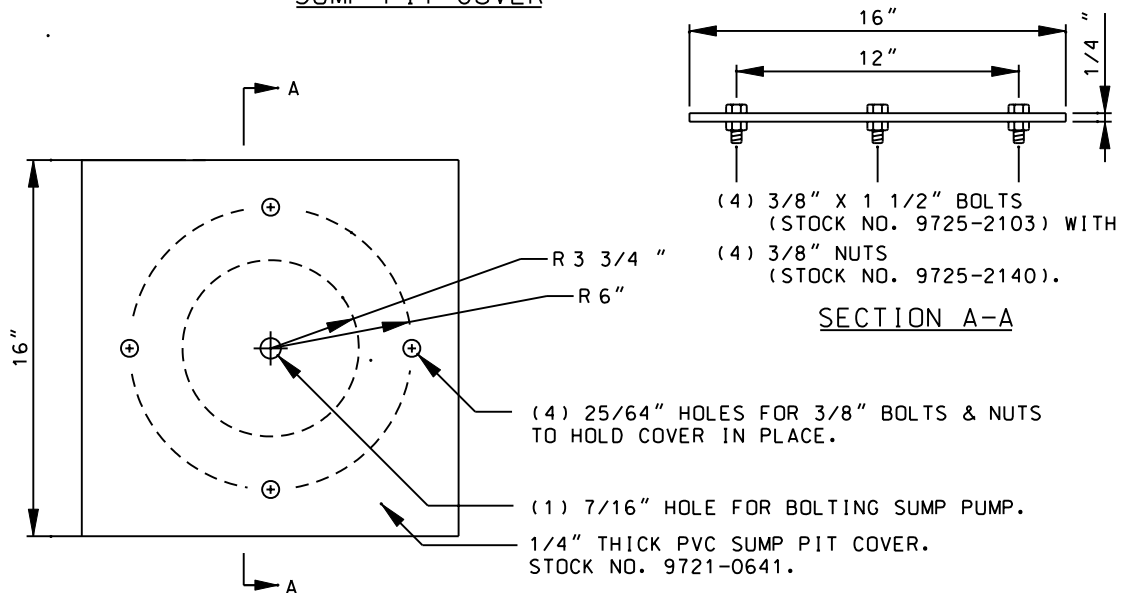


NOTES:

1. REFER TO CUSTOMER ENGINEERING DEFINITIVE DESIGN CE05.12 FOR MANHOLE SUMP PUMP AND SEWER CONNECTIONS.
2. REFER TO DWG. 2-2-1096.1.1 FOR GROUNDING IN MANHOLE.
3. REV. A :REMOVED 1 21/32" HOLES FOR PIPE CONNECTION AND DRAINAGE; CHANGED DWG FORMAT; CHANGED STOCK NO'S PER WMIS.
REV. B: CHANGED DESCRIPTION AND DESIGN OF THE SUMP PIT COVER.



SUMP PIT COVER



SECTION A-A

- (4) 25/64" HOLES FOR 3/8" BOLTS & NUTS TO HOLD COVER IN PLACE.
- (1) 7/16" HOLE FOR BOLTING SUMP PUMP.
- 1/4" THICK PVC SUMP PIT COVER. STOCK NO. 9721-0641.

DRAWN: RLH	DVLPED: JC	DATE: 09-20-93	REVIEWED:RLH DATE: 10/15/08	APPRVD: MDW DATE: 10-15-08	NEXT REVIEW: 10-11	REV: B
------------	------------	----------------	-----------------------------	----------------------------	--------------------	--------



DISTRIBUTION STANDARDS

SUMP PIT FOR STANDARD MANHOLE