

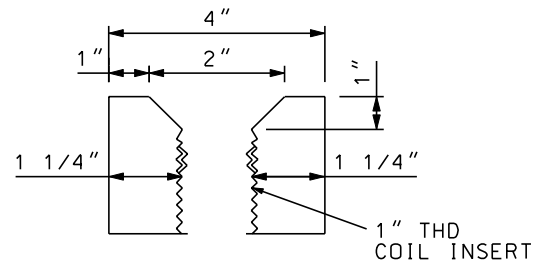
SECTION "A-A"

SECTION "B-B"

REINFORCING SCHEDULE				
ROD NO.	1	2	3	4
QUANTITY	4	12	16	4
ROD SIZE	#4	#4	#4	#4
LENGTH	3' 4"	4' 0"	3' 3"	2' 3"
C/C	1'	1'	1'	1'

NOTES:

- REFER TO DWG NO.2-2-1129 FOR SDWK ROOF W/BILCO DOOR.
- STOCK #9721-0617 APPROX. WT.2685 LBS.
- TOTAL CONCRETE 17.9 FT. MINIMUM STRENGTH 4000 PSI.
- IN ROADWAY INSTALLATIONS USE THE BILCO RDWY. DOOR, STOCK #9721-0686 AS THE ROOF AND ADJUST IT TO GRADE, COMPATIBLE UNIT MHR3535RMY.
- THE TAP HOLE SHALL BE SET SO THAT THE WALL WITHOUT INSERTS (FRONT WALL) WILL BE THE LATCHED SIDE. THIS SIDE SHALL FACE THE LARGEST OPEN AREA WHEN LOCATED IN AN AREA WITH OBSTRUCTIONS. WHEN LOCATED ON A SIDEWALK THE "FRONT WALL" SHALL BE PERPENDICULAR TO OR OPPOSITE OF THE CURB.
- REV A: CHANGED DWG FORMAT AND CHANGED STOCK NO'S PER WMIS.



DETAIL "A" KEYWAY

DRAWN: AVI | DVLPEP: RAC | DATE: 05-13-77 | REVIEWED: TDY | DATE: 9/30/08 | APPRVD: MDW | DATE: 10/7/08 | NEXT REVIEW: 11-11 | REV: A



POWER DISTRIBUTION STANDARDS

3.5' X 3.5' URD RECTANGULAR CASING