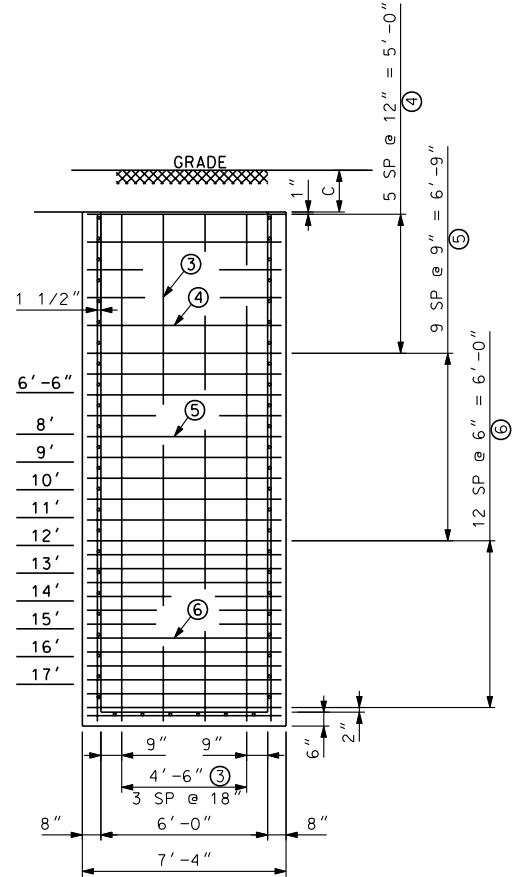


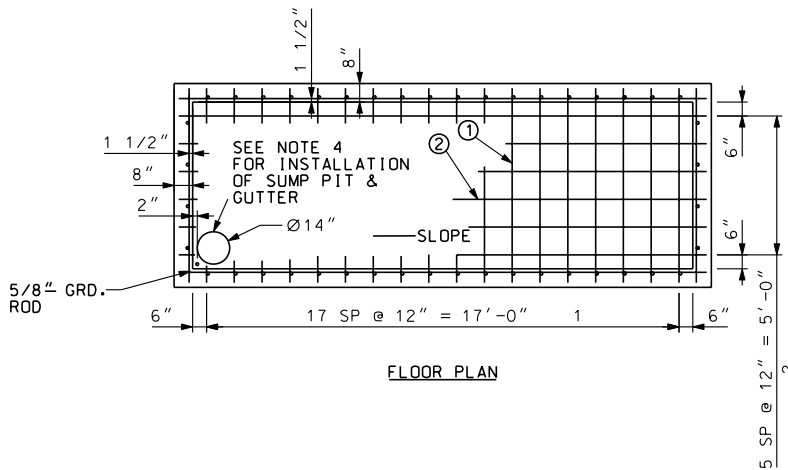
SIDE ELEVATION



END ELEVATION

NOTES:

1. C = RECESSED RDWY. 21" MIN.
RECESSED SDWK. 18" MIN.
FLUSH RDWY. 9" MIN.
FLUSH SDWK. 6" MIN.
2. SP = SPACES.
3. NUMBER IN CIRCLE INDICATES RODS IN STEEL SCHEDULE.
4. INSTALL SUMP PUMP PIT ON LOW VOLTAGE END OF MANHOLE PER DWG. 4-2-1096 & 4-2-1060 FOR TRANSFORMER MANHOLES.
5. REFER TO SECTION 6, MANHOLE CONSTRUCTION AND SPECIFICATIONS OF THE CONDUIT CONSTRUCTION MANUAL FOR FURTHER INFORMATION ON MANHOLE CONSTRUCTION.
6. THE TRANSFORMER - TO - BUS TIE CONDUITS SHOULD LEAVE THE TRANSFORMER MANHOLE (2 HORIZONTAL 3 OR 4 VERTICAL) WITH 3' OF COVER. THE CONDUITS SHOULD ENTER THE BUS MANHOLE NEAR A CORNER ON THE LONG WALL WITH THE TOP CONDUITS A MINIMUM OF 3' BELOW THE CEILING.
7. WHEN INSTALLING MANHOLES END TO END OR SIDE BY SIDE A MINIMUM OF 1' IS REQUIRED INSIDE WALL TO INSIDE WALL OF ABUTTING MANHOLES.
8. REV A: CHANGED DWG FORMAT.



FLOOR PLAN

DRAWN: DPJ | DVLPEP: FLM | DATE: 04-15-88 | REVIEWED: TWM | DATE: 10-15-08 | APPRVD: MDW | DATE: 10-29-08 | NEXT REVIEW: 10-11 | REV: A



POWER DISTRIBUTION STANDARDS

6' - 0" X 18' - 0" MANHOLE (CAST IN PLACE)

FLOOR REINFORCING SCHEDULE

FLOOR (6" THICK)		
ITEM NO.	1	2
QUANTITY	18	6
ROD SIZE	#3	#3
C/C	12"	12"
LENGTH	7'-0"	19'-0"

CONCRETE SCHEDULE

FLOOR 71 FT³
WALLS 34 FT³

MANHOLE WALLS REINFORCING SCHEDULE
(ALL WALLS ARE 8" THICK)

DEPTH	6'-6" DC							
ITEM NO.	3	4	5	6	7	8	9	10
QUANTITY	8	10	4	-	36	18	18	-
ROD SIZE	#4	#5	#5	-	#6	#4	#6	-
C/C	18"	12"	9"	-	12"	12"	9"	-
LENGTH	6'-9"	7'-0"	7'-0"	-	6'-9"	6'-9"	19'-0"	-

DEPTH	8'-0" DC							
ITEM NO.	3	4	5	6	7	8	9	10
QUANTITY	8	10	8	-	36	18	22	-
ROD SIZE	#4	#5	#5	-	#6	#4	#6	-
C/C	18"	12"	9"	-	12"	12"	9"	-
LENGTH	8'-3"	7'-0"	7'-0"	-	8'-3"	8'-3"	19'-0"	-

DEPTH	9'-0" DC							
ITEM NO.	3	4	5	6	7	8	9	10
QUANTITY	8	10	12	-	36	18	24	-
ROD SIZE	#4	#5	#5	-	#6	#4	#6	-
C/C	18"	12"	9"	-	12"	12"	9"	-
LENGTH	9'-3"	7'-0"	7'-0"	-	9'-3"	9'-3"	19'-0"	-

DEPTH	10'-0" DC							
ITEM NO.	3	4	5	6	7	8	9	10
QUANTITY	8	10	14	-	36	18	26	-
ROD SIZE	#4	#5	#5	-	#6	#4	#6	-
C/C	18"	12"	9"	-	12"	12"	9"	-
LENGTH	10'-3"	7'-0"	7'-0"	-	10'-3"	10'-3"	19'-0"	-

DEPTH	11'-0" DC							
ITEM NO.	3	4	5	6	7	8	9	10
QUANTITY	8	10	16	-	36	18	30	28
ROD SIZE	#4	#5	#5	-	#6	#4	#6	#4
C/C	18"	12"	9"	-	12"	12"	9"	9"
LENGTH	11'-3"	7'-0"	7'-0"	-	11'-3"	11'-3"	19'-0"	8'-3"

(CONTINUE ON SHT. 3 OF 5)

DRAWN: DPJ | DVLPEP: FLM | DATE: 04-15-88 | REVIEWED: TWM | DATE: 10-15-08 | APPRVD: MDW | DATE: 10-29-08 | NEXT REVIEW: 10-11 | REV: A



POWER
DISTRIBUTION
STANDARDS

6'-0" X 18'-0" MANHOLE
(CAST IN PLACE)

MANHOLE WALLS REINFORCING SCHEDULE (CONTINUE)
(ALL WALLS ARE 8" THICK)

DEPTH	12'-0" DC							
ITEM NO.	3	4	5	6	7	8	9	10
QUANTITY	8	10	20	-	36	18	32	30
ROD SIZE	#4	#5	#5	-	#6	#4	#6	#4
C/C	18"	12"	9"	-	12"	12"	9"	9"
LENGTH	12'-3"	7'-0"	7'-0"	-	12'-3"	12'-3"	19'-0"	8'-3"

DEPTH	13'-0" DC							
ITEM NO.	3	4	5	6	7	8	9	10
QUANTITY	8	10	18	6	36	18	34	34
ROD SIZE	#4	#5	#5	#5	#6	#4	#6	#4
C/C	18"	12"	9"	6"	12"	12"	9"	9"
LENGTH	13'-3"	7'-0"	7'-0"	7'-0"	13'-3"	13'-3"	19'-0"	8'-3"

DEPTH	14'-0" DC							
ITEM NO.	3	4	5	6	7	8	9	10
QUANTITY	8	10	18	10	36	18	38	36
ROD SIZE	#4	#5	#5	#5	#6	#4	#6	#4
C/C	18"	12"	9"	6"	12"	12"	9"	9"
LENGTH	14'-3"	7'-0"	7'-0"	7'-0"	14'-3"	14'-3"	19'-0"	8'-3"

DEPTH	15'-0" DC							
ITEM NO.	3	4	5	6	7	8	9	10
QUANTITY	8	10	18	14	36	18	40	38
ROD SIZE	#4	#5	#5	#5	#6	#4	#6	#4
C/C	18"	12"	9"	6"	12"	12"	9"	9"
LENGTH	15'-3"	7'-0"	7'-0"	7'-0"	15'-3"	15'-3"	19'-0"	8'-3"

DEPTH	16'-0" DC							
ITEM NO.	3	4	5	6	7	8	9	10
QUANTITY	8	10	18	18	36	18	42	42
ROD SIZE	#4	#5	#5	#5	#6	#4	#6	#4
C/C	18"	12"	9"	6"	12"	12"	9"	9"
LENGTH	16'-3"	7'-0"	7'-0"	7'-0"	16'-3"	16'-3"	19'-0"	8'-3"

DEPTH	17'-0" DC							
ITEM NO.	3	4	5	6	7	8	9	10
QUANTITY	8	10	18	22	36	18	46	44
ROD SIZE	#4	#5	#5	#5	#6	#4	#6	#4
C/C	18"	12"	9"	6"	12"	12"	9"	9"
LENGTH	17'-3"	7'-0"	7'-0"	7'-0"	17'-3"	17'-3"	19'-0"	8'-3"

DEPTH	18'-0" DC							
ITEM NO.	3	4	5	6	7	8	9	10
QUANTITY	8	10	18	26	36	18	48	48
ROD SIZE	#4	#5	#5	#5	#6	#4	#6	#4
C/C	18"	12"	9"	6"	12"	12"	9"	9"
LENGTH	18'-3"	7'-0"	7'-0"	7'-0"	18'-3"	18'-3"	19'-0"	8'-3"

DRAWN: DPJ | DVLPEP: FLM | DATE: 04-15-88 | REVIEWED: TWM | DATE: 10-15-08 | APPRVD: MDW | DATE: 10-29-08 | NEXT REVIEW: 10-11 | REV: A



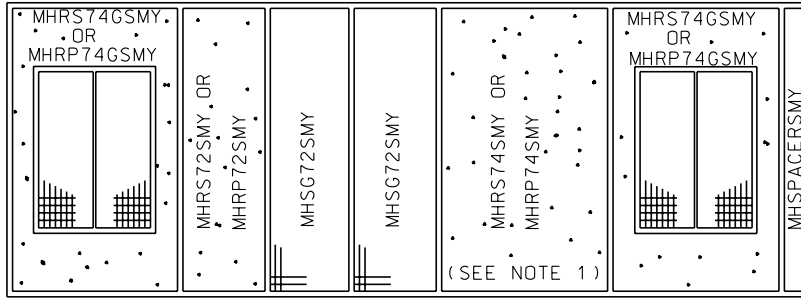
POWER
DISTRIBUTION
STANDARDS

6'-0" X 18'-0" MANHOLE
(CAST IN PLACE)

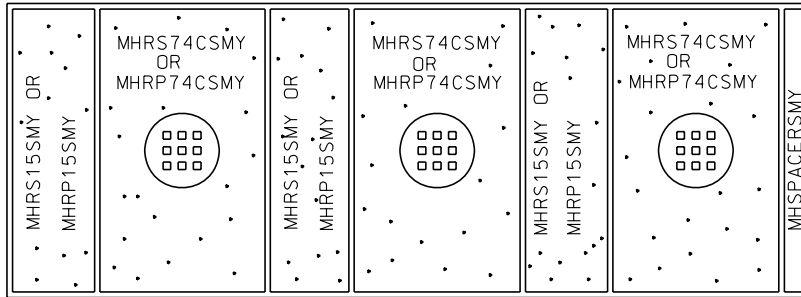
MANHOLE ROOFS

2-2-1169.4.5

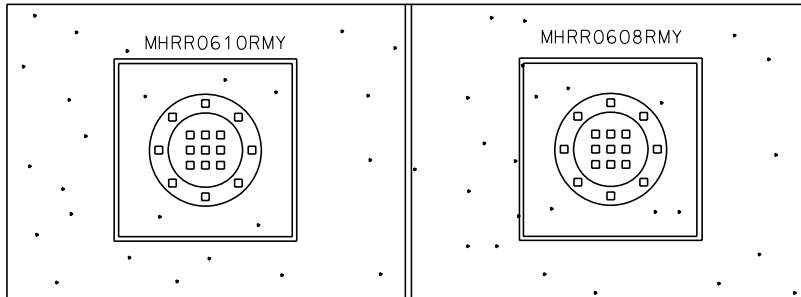
MH0618VS
OR
MH0618VPS
(SEE NOTE 3)



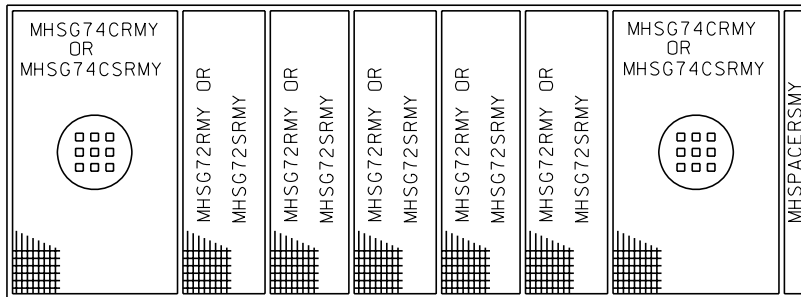
MH0618SFS
OR
MH0618SFPS
(SEE NOTE 3)



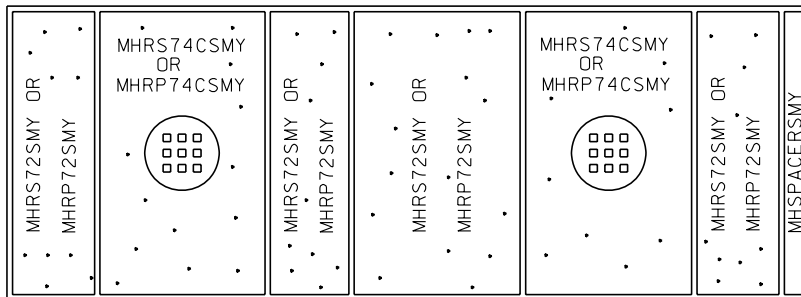
MH0618RR



MH0618VR
OR
MH0618VRS
(SEE NOTE 2)



MH0618S
OR
MH0618PS
(SEE NOTE 3)



NOTES:

1. WHEN INSTALLING A 1500KVA OR LARGER TRANSFORMER REPLACE MHR74SMY WITH 2-MHSG72SMY.
2. ENGINEERING ASSEMBLY MH0618VRS SHALL BE CALLED FOR WHEN A ROADWAY MANHOLE IS TO BE LOCATED IN A SIDEWALK, COMPATIBLE UNITS MHR74CRM AND HSG72RMY ARE REPLACED BY SG74CRM AND MHR72RMY FOR ENGINEERING ASSEMBLY MH0618VRS.
3. WHEN ENGINEERING ASSEMBLIES MH0618VPS, MH0618PS, OR MH0618SFPS ARE REQUIRED THE SIDEWALK SLABS ARE REPLACED WITH THE PAVEMENT PANS OF THE CORRESPONDING CONSTRUCTION.
4. IN PARKING LOTS, DO NOT INSTALL VENTED MANHOLES IN A HANDICAP DESIGNATED SPOT.
5. ROADWAY MANHOLES SHOULD BE INSTALLED WITH THE LONG WALL PARALLEL TO THE CURB.

DRAWN: DPJ DVL PED: FLM DATE: 04-15-88 REVIEWED: TWM DATE: 10-15-08 APPRVD: MDW DATE: 10-29-08 NEXT REVIEW: 10-11 REV: A



POWER
DISTRIBUTION
STANDARDS

6' - 0" X 18' - 0" MANHOLE
(CAST IN PLACE)

ENGINEERING ASSEMBLY BREAKDOWN FOR 6' - 0" X 18' - 0" MANHOLES

QUANTITY				DESIGNATION	DESCRIPTION	REF DWG	STOCK NO.		
2	2	3		2	3	MHC28MY	MH COVER 28" ML CO	4-2-0431	9721-0637
				2		MHDACMY	MH DOUBLE ACTING COVER ML CO	4-2-0434	9721-0640
				2		MHDAFRMY	MH DA COV FRAME 40" RDWY ML CO	4-2-0427	9721-0611
			1	1		MHRF0618RMY	MH RF FR 6X18 RDWY ML CO	4-2-1164	9721-0202
1	1	1	1	1	1	MHRF0618SMY	MH RF FRAME 6X18 SDWK ML CO	4-2-1184	9721-0210
				1		MHRR0608RMY	MH RECESSED ROOF 6X8 RDWY ML CO	4-2-1143	9721-0565
				1		MHRR0610RMY	MH RECESSED ROOF 6X10 RDWY ML CO	4-2-0722	9721-0566
					4	MHRS715SMY	MH RF SLAB 7X1.5 SDWK ML CO	4-2-1176	9721-0646
	3				1	MHRS72SMY	MH RF SLAB 7X2 SDWK ML CO	4-2-1177	9721-0648
	1				1	MHRS74SMY	MH RF SLAB 7X4 SDWK ML CO	4-2-1327	9721-0661
					2	MHRS74GSMY	MH RF SLAB 7X4 DR GRT SDWK ML CO	4-2-1327	9721-0663
	2				3	MHRS74CSMY	MH RF SLAB 7X4 SAC SDWK ML CO	4-2-1327	9721-0662
		4				MHRP715SMY	MH RF SLAB PAN 7X1.5 SDWK ML CO	4-2-1176	9721-0213
3			1			MHRP72SMY	MH RF SLAB PAN 7X2 SDWK ML CO	4-2-1177	9721-0214
1			1			MHRP74SMY	MH RF SLAB PAN 7X4 SDWK ML CO	4-2-1327	9721-0222
2		3				MHRP74CSMY	MH RF SLAB PAN 7X4 SAC SDWK ML CO	4-2-1327	9721-0223
			2			MHRP74GSMY	MH RF SLAB PAN 7X4 DRGRT SDWK ML CO	4-2-1327	9721-0221
			2		2	MHSG72SMY	MH RF SLAB GRATE 7X2 SDWK ML CO	4-2-1183	9721-0682
				5		MHSG72RMY	MH SLAB GRT 7X2 RDWY ML CO	4-2-1163	9721-0620
						MHSG72SRMY	MH SLAB GRT 7X2 SP RDWY ML CO	4-2-1163	9721-0238
				2		MHSG74CRMY	MH SLAB GRT 7X4 SAC RDWY ML CO	4-2-1351	9721-0658
			2			MHSG74CSRMY	MH SLAB GRT 7X4 SAC SP RDWY ML CO	4-2-1351	9721-0659
1	1	1	1		1	MHSPACERSMY	MH SPACER FOR SDWK MH ML CO	4-5-1386	9721-0669
						MHSPACERRMY	MH SPACER FOR RDWY MH ML CO	4-5-1386	9721-0668
1	1			1		MH0618MY	MH 6X18X6.5 DC ML CO	4-2-1169	
		1	1	1	1	MH0618VMY	MH 6X18X10 DC ML CO	4-2-1169	
DESCRIPTION									
						MH0618VS	MH 6X18 VENT SDWK TYPE		
						MH0618SFS	MH 6X18 SWITCH/FUSE SDWK TYPE		
						MH0618VR	MH 6X18 VENT RDWY TYPE		
						MH0618RR	MH 6X18 RECESSED RDWY TYPE		
						MH0618VRS	MH 6X18 VENT RDWY FOR SDWK TYPE		
						MH0618VPS	MH 6X18 VENT PAVERS SDWK TYPE		
						MH0618SFPS	MH 6X18 VENT SWITCH/FUSE PAVERS SDWK TYPE		
						MH0618S	MH 6X18 SDWK TYPE		
						MH0618PS	MH 6X18 PAVERS SDWK TYPE		

DRAWN: DPJ | DVLPEP: FLM | DATE: 04-15-88 | REVIEWED: TWM | DATE: 10-15-08 | APPRVD: MDW | DATE: 10-29-08 | NEXT REVIEW: 10-11 | REV: A



POWER DISTRIBUTION STANDARDS

6' - 0" X 18' - 0" MANHOLE ENGINEERING ASSEMBLIES BREAKDOWN