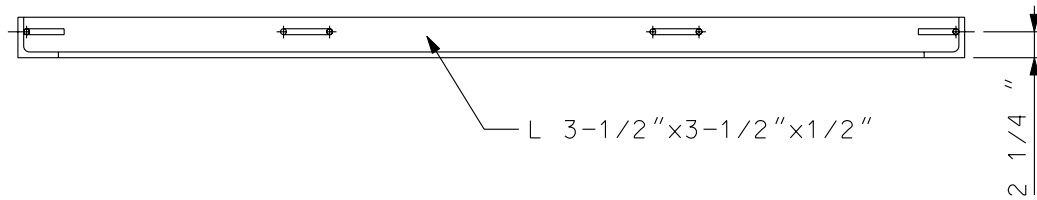


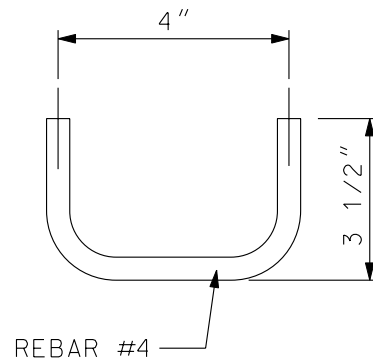
PLAN OF THE FRAME STOCK NO. 9721-0634



SECTION 1

NOTE:

1. REV A: CHANGED DWG FORMAT.
2. FRAME NOTES: SEE PAGE 3
3. REV B: CHANGED DWG FORMAT, STOCK NUMBERS, DWG NUMBERS
4. WELDING SPECIFICATIONS -SEE PAGE 5



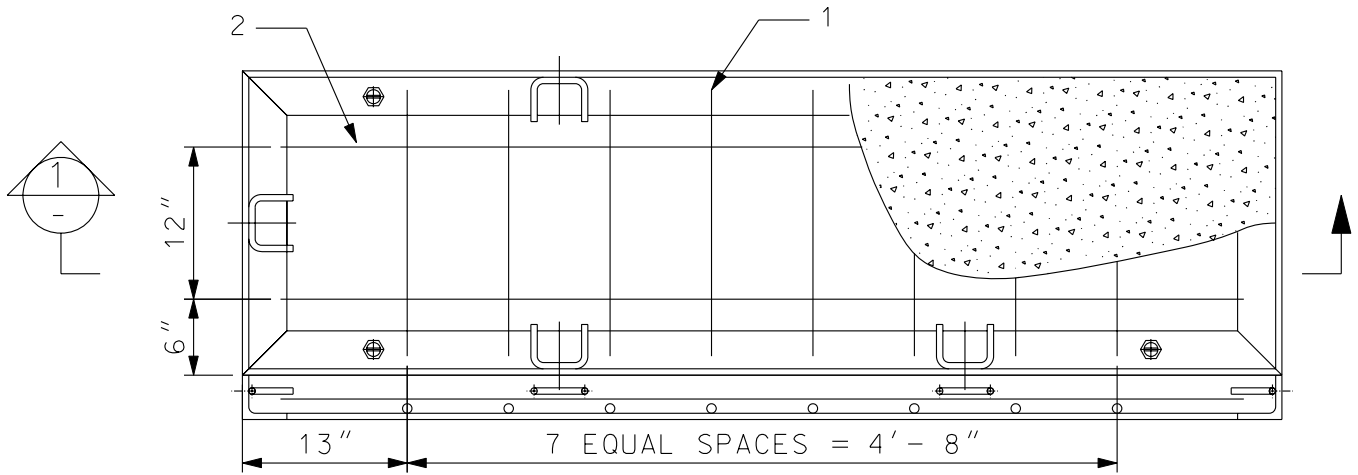
DETAIL A
1" = 5"

DRAWN: DPJ	DVLPED: CER	DATE: 02-10-82	REVIEWED: TDY	DATE: 10/28/08	APPRVD: MDW	DATE: 10/15/08	NEXT REVIEW: 11/11	REV: B
------------	-------------	----------------	---------------	----------------	-------------	----------------	--------------------	--------

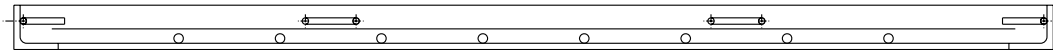


POWER DISTRIBUTION STANDARDS

2'-0" x 6'-10" FLUSH TYPE ROOF SLABS FOR SIDEWALK MANHOLES



PLAN OF THE SLAB: MHR572SMY STOCK NO. 9721-0648



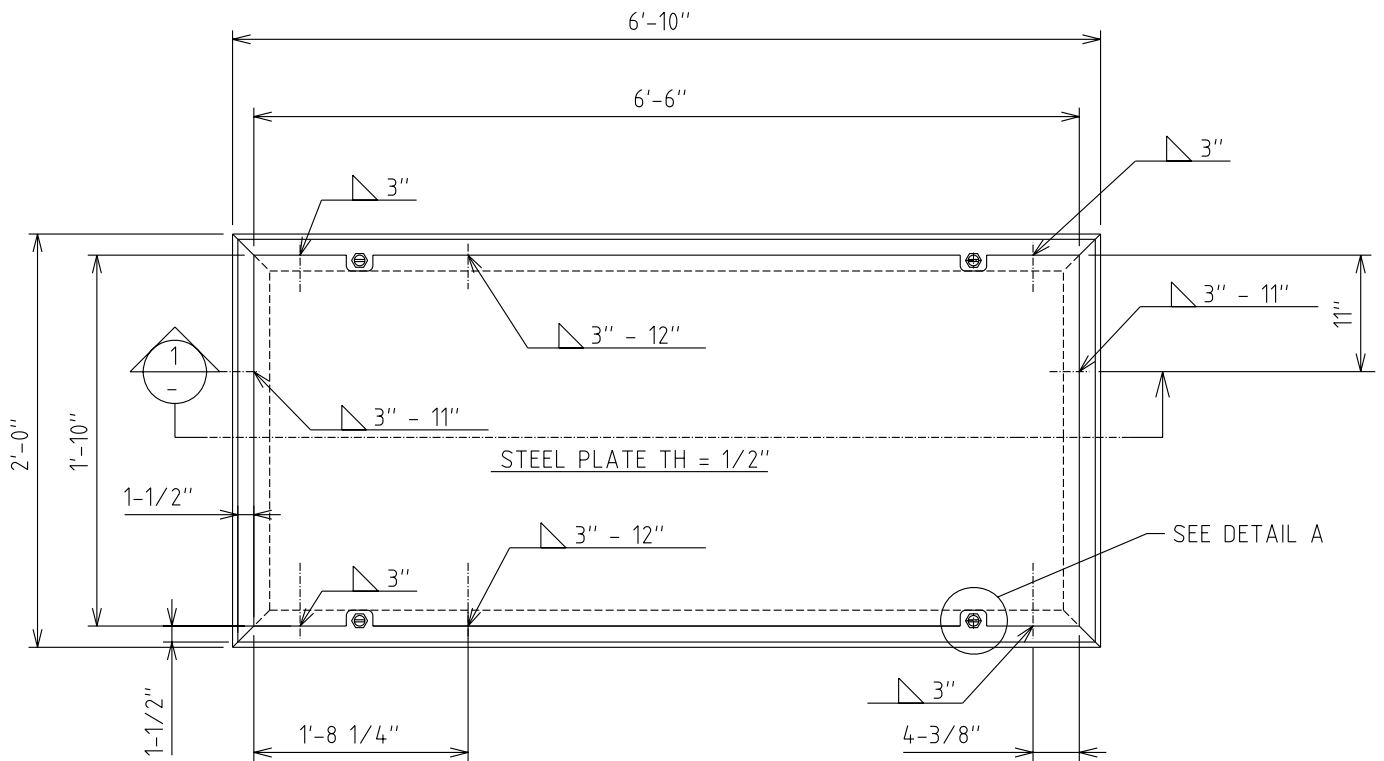
SECTION 1

SIDEWALK SLAB NOTES:

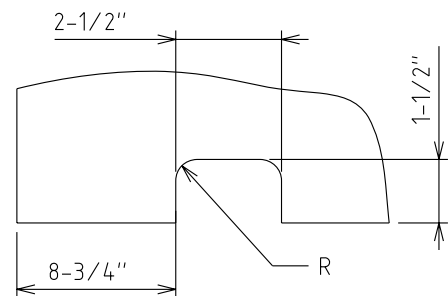
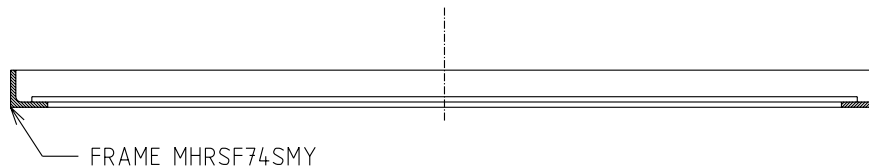
- 1: THE REBAR SHALL BE EPOXY AND INSTALLED INTO THE FRAME AS SHOWN.
- 2: CONCRETE SHALL THEN BE TROWL FINISHED FLUSH WITH THE TOP EDGE FRAME.
- 3: SDWK SLAB WEIGHT = 850 LBS
- 4: 4 CU.F.T OF 4000PSI CONCRETE
- 5: REV A: CHANGED DWG FORMAT.
- 6: REV B: CHANGED DWG FORMAT, STOCK NUMBERS, DWG NUMBERS.

ROD NO	1	2
QUANTITY	8	2
SIZE	#3	#3
LENGTH	1' - 9"	6' - 4"





PLAN OF THE SLAB PAN: MHRP72SMY: STOCK NO. 9721-0214



DETAIL A

SIDEWALK SLAB NOTES:

1. THE FRAME SHALL BE BUILT WITHOUT STIRRUPS (DETAIL A OF 2-2-1327 SH 1).
2. SDWK SLAB PAN WEIGHT = 727 LBS (FRAME 246 LBS + STEEL PLATE 481 LBS)
3. THE STEEL PLATE SHALL BE NOTCHED AND WELDED TO THE FRAME BEFORE GALVANIZING.
4. WELDING SPECIFICATIONS - SEE PAGE 14

DRAWN: DPJ | DVL PED: CER DATE: 02-10-82 | REVIEWED: IDY DATE: 10/8/08 | APPRVD: MDW DATE: 10/15/08 | NEXT REVIEW: 11/11 | REV: B



POWER DISTRIBUTION STANDARDS

2'-0" x 6'-10" FLUSH TYPE ROOF SLABS FOR SIDEWALK MANHOLES

FRAME NOTES:

- 1: MITER AND WELD ALL CORNERS 90 GRIND OFF ANY HIGH SPOTS ON THE FLANGE SURFACES TO ALLOW PROPER SEATING OF FRAME.
- 2: FINISHED FRAME IS TO HAVE ALL CORNERS ON THE SAME PLANE AND IS NOT TO BE TWISTED OR BENT
- 3: FRAME TO BE GALVANIZED AFTER SHOP WORK AND SHALL CONFORM TO A.S.T.M SPECIFICATION A-123 WITH LATEST REVISIONS THEREOF.
- 4: THIS FRAME SHALL BE LIMITED TO SIDEWALK USE WITH MAXIMUM CLEAR SPAN BETWEEN SUPPORTS OF 6'-4".
- 5: FRAME WEIGHT = 200 LBS
- 6: REV A: CHANGED DWG FORMAT. CHANGED STOCK NO'S PER WMIS.
- 7: REV B: CHANGED DWG FORMAT, STOCK NUMBERS, DWG NUMBERS.

COMPATIBLE UNIT				
2'-0" x 6'-10" SLAB FOR SIDEWALK MANHOLES				
QUANTITY	ITEM	STOCK #	DESCRIPTION	EA
17'-8"			CORNER L 3-1/2"x3-1/2"x1/2"H	
7'-9"		9700-0024	REBAR SIZE #4	
26'-8"		9700-0023	REBAR SIZE #3	
DESIGNATION		DESCRIPTION		STOCK NO.
MHR572SMY		SLAB 7x2 SDWK ROOF		9721-0648

DRAWN: DPJ | DVL PED: CER | DATE: 02-10-82 | REVIEWED: IDY | DATE: 10/8/08 | APPRVD: MDW | DATE: 10/15/08 | NEXT REVIEW: 11/11 | REV: B



POWER
DISTRIBUTION
STANDARDS

2'-0" x 6'-10" FLUSH TYPE ROOF
SLABS FOR SIDEWALK MANHOLES

WELDING SPECIFICATIONS

- 1: ALL STRUCTURAL STEEL SHALL CONFORM TO ASTM A36.
- 2: ALL STEEL IS TO BE WELDED IN ACCORDANCE WITH AWS D1.1 USING EITHER THE SMAW PROCESS (AWS SPEC. A5.1) OR THE FCAW PROCESS (AWS SPEC. A5.20 OR A5.29).
- 3: ALL WELDING IS TO BE PERFORMED ACCORDING TO WELDING PROCEDURE SPECIFICATIONS PFAB200601, PFAB200602 AND PFAB200603.
- 4: ALL WELDERS ARE TO BE QUALIFIED ACCORDING TO AWS D1.1.
- 5: ALL WELDER CERTIFICATION RECORDS ARE TO BE DOCUMENTED, MAINTAINED AND AVAILABLE FOR INSPECTION/VERIFICATION.

DRAWN: DPJ	DVLPED: CER	DATE: 02-10-82	REVIEWED: TDY DATE: 10/8/08	APPRVD: MDW	DATE: 10/15/08	NEXT REVIEW: 11/11	REV: A
------------	-------------	----------------	-----------------------------	-------------	----------------	--------------------	--------



POWER
DISTRIBUTION
STANDARDS

2'-0" x 6'-10" FLUSH TYPE ROOF
SLABS FOR SIDEWALK MANHOLES