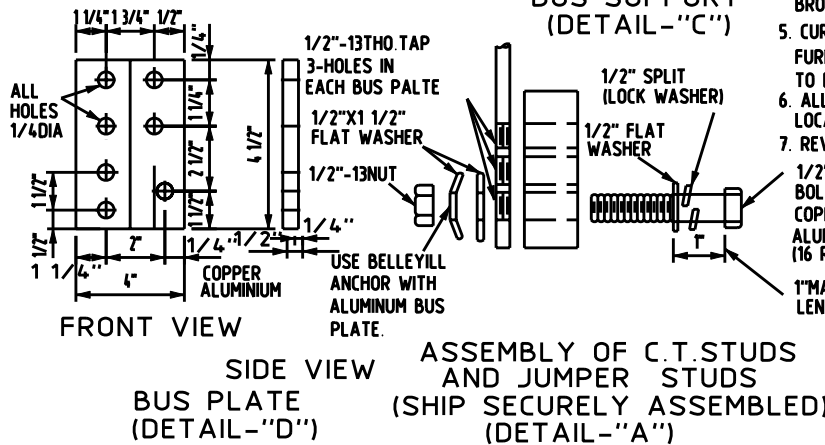
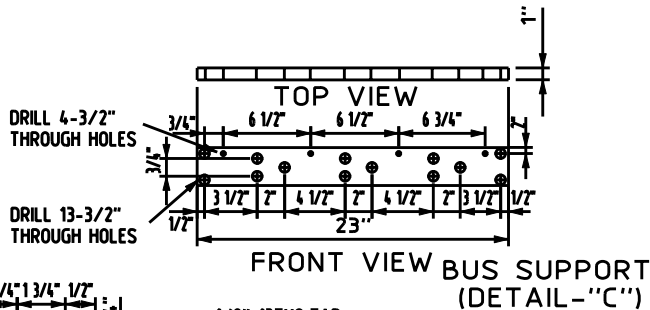


MOUNTING DEVICE ASSMBLY NOTES:

1. BUS SUPPORTS TO BE 1"THICK BENELEX"70"STOCK OR EQUAL, ACCURATELY DRILLED AND MOUNTED ON ANGLE BRACKETS WITH 1/2"X2" BOLTS,NUTS & LOCK WASHERS.
2. PHASE BUSES TO BE 1/4"X4"COPPER OR 1/2"X4"ALUMINUM DRILLED,TAPPED AND INSERTED IN LINE AS SHOWN.
3. NEUTRAL BUS TO BE 1/4"X4' COPPER OR ALUMINUM MOUNTED WITH NUTS&LOCK WASHERS ON 1/2"STUDS WELDED TO THE BACK OF CABINET.PROVIDE A "10/32X1 1/2" BRASS NEUTRAL METERING STUD COUNTER SUNK AS SHOWN.
4. ALL COPPER AND ALUMINUM PARTS TO BE SILVER TIN PLATED.ALL SCREWS,NUTS,BOLTS AND WASHERS TO BE OF CADMIUM PLATED STEEL. STAINLESS STEEL OR HIGH STRENGTH SILICON BRONZE UNLESS OTHERWISE SPECIFIED.
5. CURRENT TRANSFORMERS,LINE LUGS AND BOLTS FURNISHED BY PEPCO. LOAD LUGS AND BOLTS TO BE FURNISHED BY CUSTOMER.
6. ALL ITEMS NOT DIMENSIONED ARE TO BE CONSIDERD LOCATED BY SYMMETRY.
7. REVA: CHANGED DRAWING FORMAT.



DRAWN: AVI | DVLPED: BMF | DATE: 06-10-66 | REVIEWED: CEG | DATE: 06-10-66 | APPRVD: MDW | DATE: 02-27-08 | NEXT REVIEW: 02-11 | REV: A



POWER DISTRIBUTION STANDARDS

1-3 PHASE METERING C/T CABINET
800 AMPERE CONTINUOUS RATING