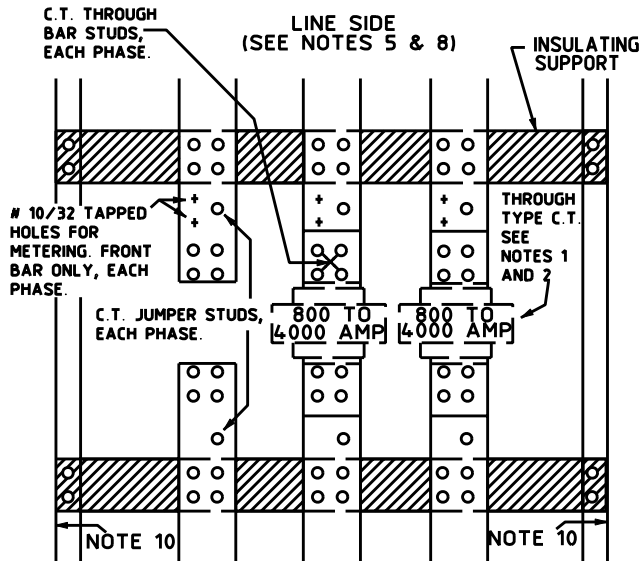
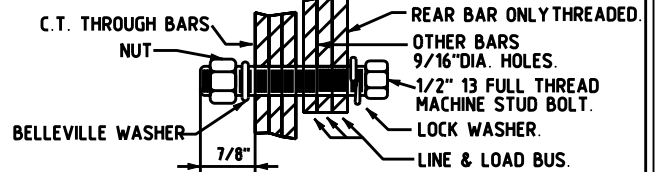


NOTES:

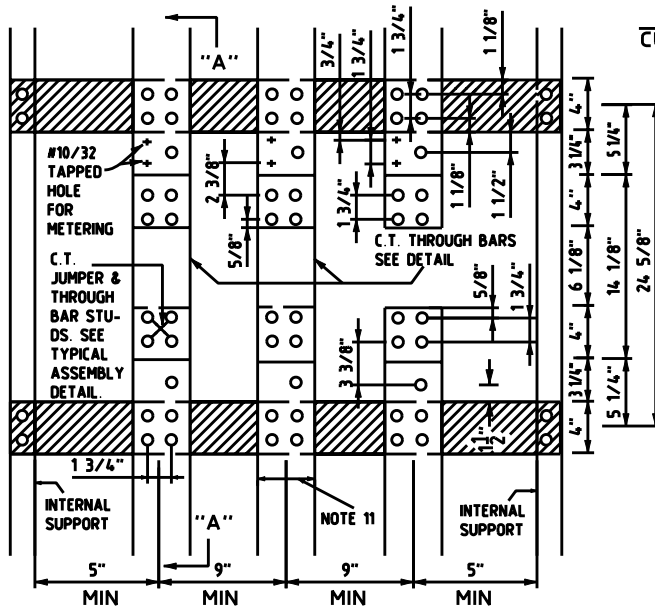
1. COPPER THROUGH BARS FOR THROUGH TYPE CURRENT TRANSFORMERS TO BE FURNISHED AS STANDARD EQUIPMENT BY SWITCHBOARD MANUFACTURER.
2. ALL CURRENT TRANSFORMERS TO BE FURNISHED BY PHI
3. FOR DEAD FRONT SWITCHBOARDS, ACCESS TO CURRENT TRANSFORMERS SHALL BE PROVIDED THROUGH HINGED DOORS EQUIPPED WITH APPROVED MEANS FOR SEALING.
4. METERING NEUTRAL BAR MAY BE MOUNTED AT RIGHT OR LEFT SIDE OF COMPARTMENT.
5. FOR BOTTOM LINE CONNECTED COMPARTMENTS, INVERT ALL DETAILS.
6. PROVIDE FOR EMERGENCY SWITCH TAPS & WATER GROUND TAP ON LOAD SIDE OF PHASE AND NEUTRAL BUS.
7. MANUFACTURER TO EXTEND NEUTRAL BUS INTO THE CURRENT TRANSFORMER COMPARTMENT AND PROVIDE READILY ACCESSIBLE #10/32 TAPPED HOLE FOR METERING.
8. MIN 36" SPACE REQUIRED FROM CABLE TERMINAL BUS TO FLOOR CEILING OR DUCT ENTRANCE FOR PHASING LINE SERVICE CABLES. CONTACT PHI. ENG. DEPT. FOR APPROVAL PRIOR TO FABRICATION. REF DWG 5-5-0695.
9. ALL BOLTS, SCREWS, STUDS, NUTS, AND WASHERS TO BE 300 GRADE STAINLESS STEEL, SILICON BRONZE OR CADMIUM PLATED STEEL.
10. THE INSULATING SAFETY BARRIER MUST BE INSTALLED AT THE BOTTOM OF THE CABINET LOCATED ABOVE THE LANDING BAR WITH TWO INCH CLEARANCE AWAY FROM THE VERTICAL BUS.
11. SIZE OF BUS CONDUCTOR TO BE AS LOAD REQUIRES.
12. ALUMINUM OR COPPER BUS BAR ARE ACCEPTABLE, BUT THE THROUGH BAR MUST BE COPPER ONLY.
13. CUSTOMER TO PROVIDE OXIDE INHIBITOR GREASE. TO BE APPLIED WHERE ALUMINUM BUS BAR CONNECTS TO COPPER THROUGH BAR.
14. CT CABINETS SHALL BE BUILT ACCORDING TO UL 891 REQUIREMENTS.



ELEVATION
SHOWING METHOD OF MOUNTING THROUGH TYPE CURRENT TRANSFORMERS (SEE NOTES 5 & 6)

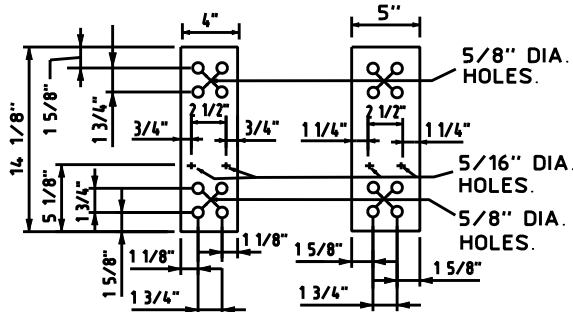
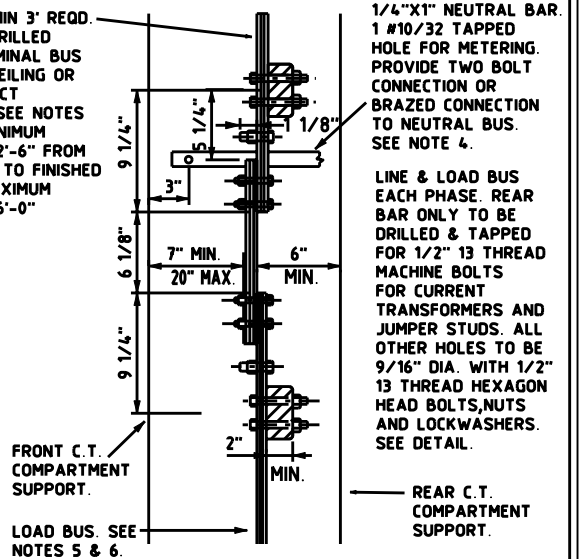


TYPICAL ASSEMBLY DETAIL
CURRENT TRANSFORMER JUMPER & THROUGH BAR STUDS



ELEVATION
SHOWING DRILLING DETAIL AND MINIMUM SPACING

LINE BUS. MIN 3' REQ. BETWEEN DRILLED CABLE TERMINAL BUS & FLOOR, CEILING OR SERVICE DUCT ENTRANCE SEE NOTES 5 & 8. MINIMUM DIMENSION 2'-6" FROM () OF C.T.'S TO FINISHED FLOOR. MAXIMUM DIMENSION 6'-0"



TYPICAL DETAIL
COPPER C.T. THROUGH BARS

- (1) 1/4"x4" THROUGH BARS FOR 800-1199 AMPS.
- (2) 1/4"x4" THROUGH BARS FOR 1200-1499 AMPS.
- (3) 1/4"x4" THROUGH BARS FOR 1500-1999 AMPS.
- (4) 1/4"x4" THROUGH BARS FOR 2000-2999 AMPS.
- (4) 1/4"x5 THROUGH BARS FOR 3000-4000 AMPS.

DRAWN: AVI | DVLPED: CEG | DATE: 6-25-63 | REVIEWED: JKP | DATE: 5-28-08 | APPRVD: MDW | DATE: 5-28-08 | NEXT REVIEW: 02-11 | REV: C



POWER DISTRIBUTION STANDARDS

CURRENT TRANSFORMER MOUNTING FOR 800 TO 4000 AMPERE CONTINUOUS RATING SWITCHBOARD