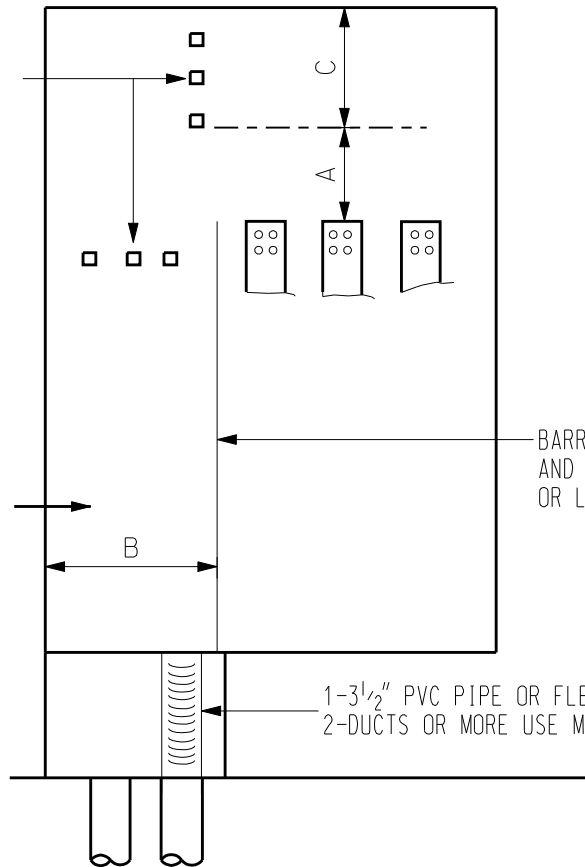


NON-FERROUS CABLE SUPPORTS AS SPECIFIED BY PEPCO DEPENDING ON NUMBER OF CABLES & HEIGHT OF SWITCH SEE NOTE 5.

CABLE WAY OR TROUGH WITHIN SWITCH ENCLOSURE (SEE NOTE 3)



BARRIER BETWEEN SERVICE CABLES AND LIVE PARTS OF SWITCH OR LOAD CABLES

1-3 1/2" PVC PIPE OR FLEXIBLE METAL CONDUIT. (400 AMP. MAX.)
2-DUCTS OR MORE USE METAL TROUGH.

FIGURE 7. MAINLINE SERVICE SWITCH - TOP CONNECTED. BOTTOM FED INDOOR OR OUTDOOR WEATHERPROOF

SWITCH SIZE	A	B	C	COMMENTS
400 - 600 AMPERES	10"	8"	8"	
601 - 1199 AMPERES	NOTE 1	NOTE 2	12"	
1200 AMPERES & ABOVE	18"		18"	W OR W/O LIMITER LUGS

NOTES:

- 15" WITHOUT LIMITER LUGS, 18" WITH LIMITER LUGS.
- VARIES WITH NUMBER OF DUCTS. B = 12" MIN.
- MOST SERVICES ARE SUPPLIED FROM UNDERGROUND AND NEED A BOTTOM FED SWITCH WITH LINE TERMINATIONS AT THE BOTTOM OF THE ENCLOSURE.
THIS WOULD ELIMINATE TROUGHS AS IN FIGURE 6, SH. 6. AND NEED FOR BARRIERS IN FIGURE 7.
- NEUTRAL TERMINALS TO HAVE SAME DRILLINGS AND CLEARANCES AS PHASE TERMINALS.
- CABLE SUPPORTS SHALL BE 1" OR LARGER NON-FERROUS, NON-HYGROSCOPIC AND FIRE RETARDANT MATERIAL SUCH AS EXTREN 525 FIBERGLASS TUBING, BENELEX BAR, GLASTIC CHANNEL OR MICARTA.
- 3 1/2" FLEXIBLE METAL CONDUIT REQUIRES A MINIMUM OF 3 FEET BETWEEN FLOOR AND CABINET.

REFERENCES	ITEMS COVERED	NOTES
	CLEARANCES FOR CABLE TERMINATIONS IN MAINLINE SERVICE DISCONNECT SWITCHES. BOTTOM FED TOP CONNECTED.	

REV.	CHANGE	APP'D	TITLE	CABLE TERMINATIONS	PREP.	DATE	12/08/81	DESIGN NO.
				CUSTOMER DESIGN		BY	WLB	CD.005.07
								SHT. NO. 7 OF 11