

MAINLINE SWITCHES OR BREAKERS IN TOP CONNECTED SWITCHBOARDS OR WALL MOUNTED SWITCHES. 1200 AMPERES TO 4000 AMPERES.

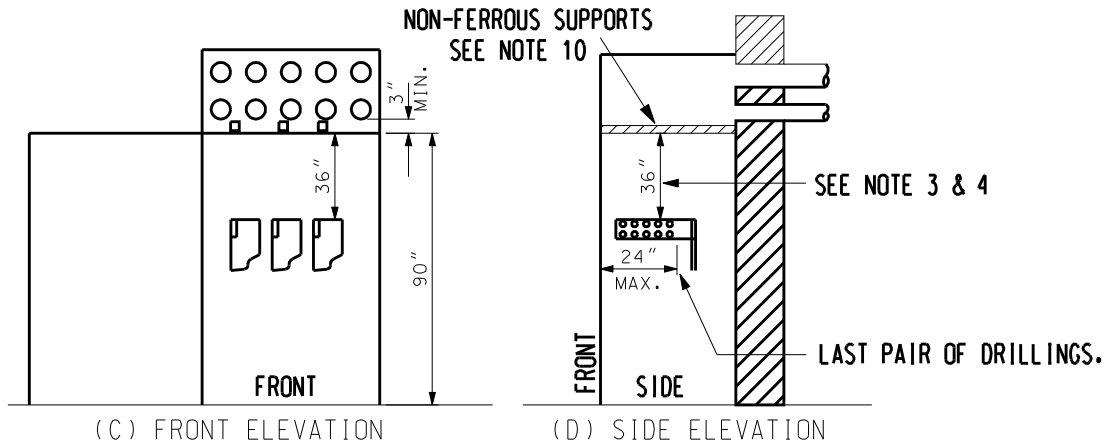
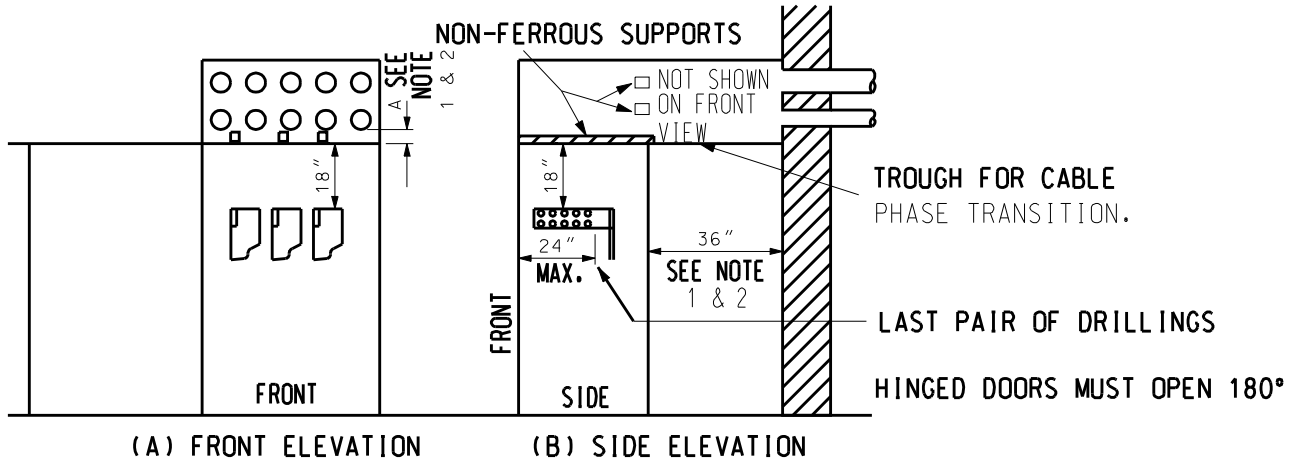


FIGURE 9. SERVICE CONDUIT ENTERING DIRECTLY BEHIND & ABOVE COMPARTMENT.

NOTES:

1. VIEW A & B-IF "A" IS LESS THAN 18" TRANSITION TROUGH AS IN "B" IS REQUIRED.
2. VIEW A & B-IF "A" EQUALS 18", BACK OF SWITCHBOARD MAY BE PLACED AGAINST WALL.
3. VIEW C & D-WITH SERVICE DUCTS LOCATED AS SHOWN 36" CLEARANCE IS NEEDED BETWEEN TERMINATIONS & TOP OF COMPARTMENT.
4. VIEW C & D-ENCLOSURE WITH 36" CLEARANCE ABOVE TERMINATIONS CAN ACCOMMODATE MOST LOCATIONS OF SERVICE CONDUIT ENTRANCE.
5. CONTACT PEPCO FOR NUMBER OF SERVICE DUCTS.
6. CUSTOMER SHALL SUBMIT DETAILED PLANS OF SERVICE EQUIPMENT FOR PEPCO APPROVAL FOR 1200 AMPERE CAPACITY AND ABOVE PRIOR TO PURCHASE.
7. TROUGH TO HAVE REMOVABLE PANELS THAT ARE SMALL ENOUGH TO BE HANDLED SAFELY BY ONE PERSON. TROUGHS TO HAVE PROVISION FOR SEALS.
8. FULL OPENING IN TOP OF COMPARTMENTS.
9. NEUTRAL TERMINALS TO HAVE SAME DRILLINGS AND CLEARANCES AS PHASE CABLES. REFER TO PEPCO STD. DWG. 7-5-695.
10. CABLE SUPPORTS SHALL BE 1" OR LARGER NON-FERROUS, NON-HYGROSCOPIC AND FIRE RETARDENT MATERIAL SUCH AS EXTREN 525 FIBERGLASS TUBING, BENELEX BAR, GLASTIC CHANNEL OR MICARTA

REFERENCES	ITEMS COVERED	NOTES
	CLEARANCE FOR CABLE TERMINATIONS FOR MAINLINE SWITCHES OR BREAKERS MOUNTED IN SWITCHBOARD WITH NECESSARY TROUGHS.	

REV.	CHANGE	APP'D	TITLE	CABLE TERMINATIONS	PREP.	DATE	12/14/81	DESIGN NO.
				CUSTOMER DESIGN		BY	W.L.B.	CD.005.09
					APPROVED			SHT. NO. 9 OF 11
					J.D.S.G.L.K			