

MAINLINE SWITCHES OR BREAKERS IN BOTTOM CONNECTED SWITCHBOARDS:
OR WALL MOUNTED SWITCHES: 1200 AMPERES TO 4000 AMPERES:

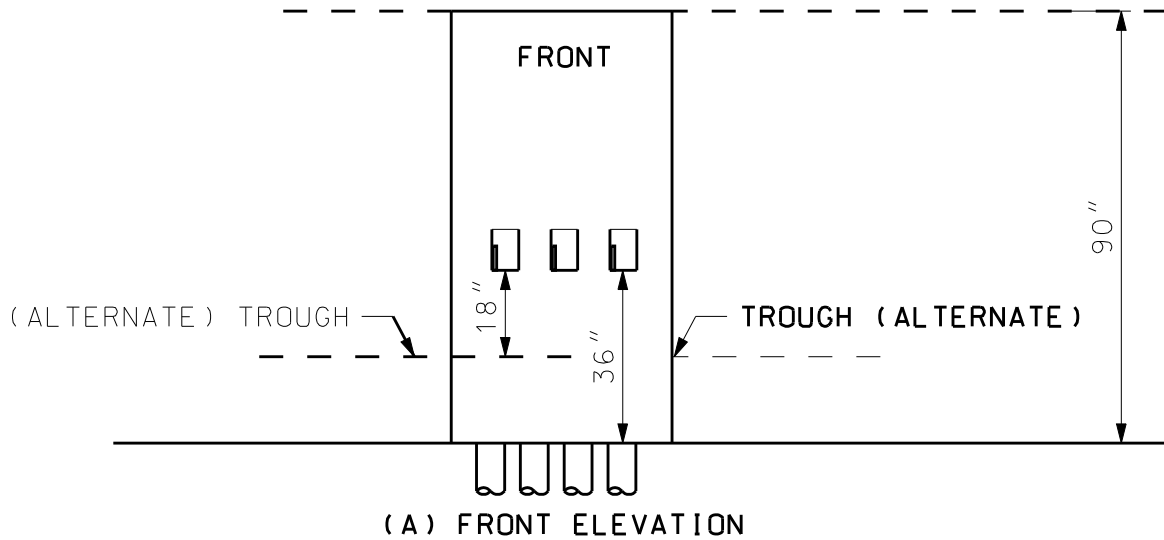


FIGURE 10. CONDUIT ENTERING BOTTOM OR TROUGHS ENTERING SIDES OF COMPARTMENT.

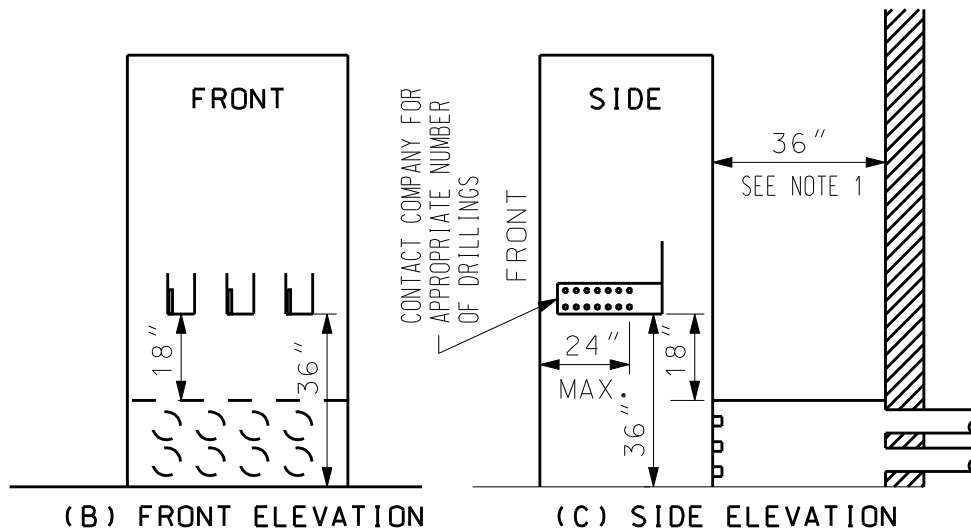


FIGURE 11. CONDUIT AND CABLE ENTERING BOTTOM REAR OF SWITCHBOARD.

NOTES:

1. VIEW C-36" CABLE PHASE TRANSITION TROUGH REQUIRED IN REAR.
2. CONTACT PEPCO FOR NUMBER OF DUCTS.
3. CUSTOMER SHALL SUBMIT DETAILED PLANS OF SERVICE EQUIPMENT FOR PEPCO APPROVAL FOR 1200 AMPERE CAPACITY AND ABOVE PRIOR TO PURCHASE.
4. TROUGHS TO HAVE REMOVABLE PANELS THAT ARE SMALL ENOUGH TO BE HANDLED SAFELY BY ONE PERSON. TROUGHS TO HAVE PROVISION FOR SEALS.
5. NEUTRAL TERMINALS TO HAVE SAME DRILLINGS AND CLEARANCES AS PHASE TERMINALS. REFER TO PEPCO STD. DWG. 7-5-695.

REFERENCES	ITEMS COVERED	NOTES
	CLEARANCES FOR CABLE TERMINATIONS FOR MAINLINE SWITCHES OR BREAKERS MOUNTED IN SWITCHBOARD WITH NECESSARY TROUGHS.	

REV.	CHANGE	APP'D	TITLE	CABLE TERMINATIONS	PREP.	DATE	12/10/81	DESIGN NO.
			CUSTOMER DESIGN			BY	W.L.B.	CD.005.10
					APPROVED			SHT. NO. 10 OF 11
					J.D.S.G.L.K			