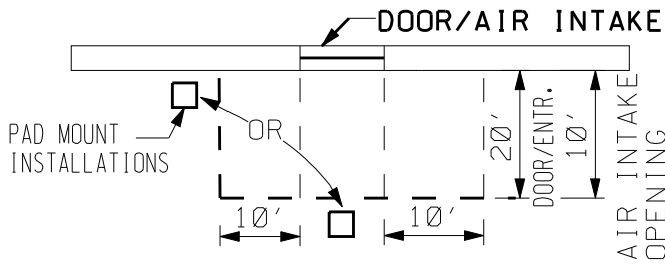


# PAD MOUNT LOCATIONS

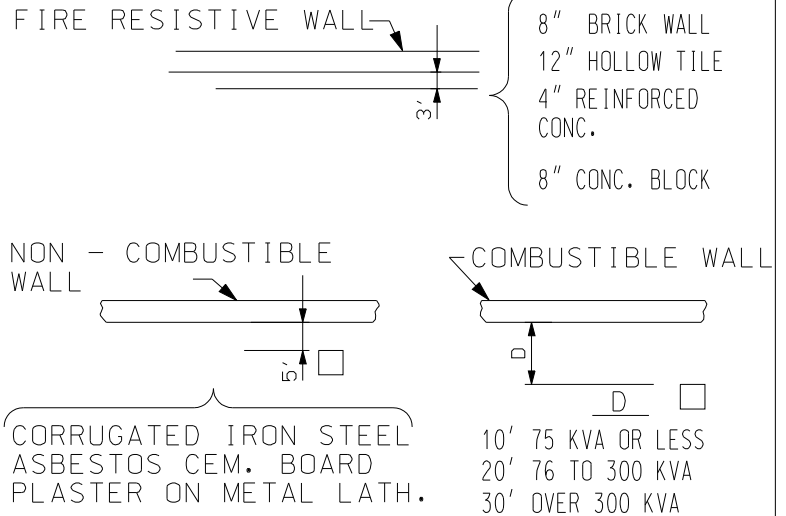
## MINIMUM CLEARANCES

### DOOR AND ENTRANCES

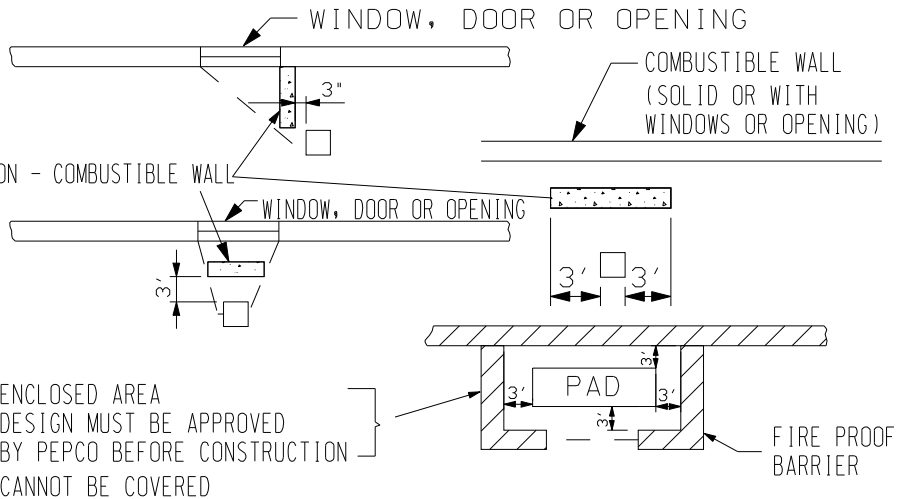


IF THE AIR INTAKE OPENINGS IS ABOVE THE TRANSFORMER, THERE MUST BE A 28' VERTICAL DISTANCE FROM THE OPENING TO THE TRANSFORMER

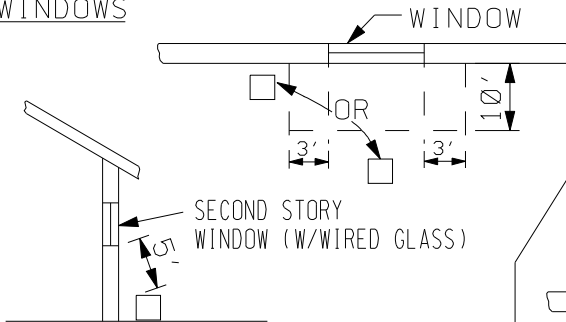
### WALLS



**BARRIERS** CONSTRUCTED BY CUSTOMER FOR APPEARANCE OR FOR CLOSER POSITIONING OF TRANSFORMER SHOULD BE AT LEAST 1 FT. HIGHER THAN PAD MOUNT TRANSFORMER. ENCLOSED BARRIERS IF LOCKED SHOULD BE ACCESSIBLE AT ALL TIMES WITH KEY FURNISHED TO PEPCO.



### WINDOWS



### NOTES:

SEE DEFINITIVE DESIGN DRAWING 02.06 SHEET 3 OF 3 FOR SCREENING DETAIL MAINTAIN 20 FT. CLEARANCE FROM FIRE ESCAPES.

MAINTAIN 10" CLEARANCE IN FRONT OF PAD (FREE FROM BUSHES, PERMANENT FENCES ETC.) FOR TROUBLE OPERATION. PAD SHALL NOT BE LOCATED IN AREA SUSCEPTIBLE TO FLOODING OR SLOPED TOWARDS BUILDING.

### MAX. COMPOSITE TRANSFORMERS DIMENSIONS (IN)

DESCRIPTION	STANDARD DRAWINGS	OVERALL SIZE	MAX. # DUCTS	TRANSFORMER SIZES	HJ.	W	DP.
3Ø 75-500 KVA	4-1-983 & 6-1-983	7'6" & 6'0"	SPACE	75, 150, 300, 500	**54	84"	68"
3Ø 500-1500 KVA	4-1-983 & 6-1-983	7'6" & 7'6"	FOR	500, 750, 1000, 1500	**72	84"	84"
3Ø 1500-2500 KVA	4-1-983 & 6-1-983	7'6" & 9'0"	4 PRI. & 15 SERVICE	1500, 2000, 2500	72	84"	102"

500 KVA TR. 60" HIGH (MAX)

\* 120/208 VOLTS TRANSFORMERS ARE LIMITED TO A MAXIMUM 1000KVA RATINGS

### REFERENCES

O.M. STDS. SECTION 19 FOR FUSING, B/M, DIMENSIONS

### ITEMS COVERED

PAD MOUNT TRANSFORMER MAXIMUM DIMENSIONS. GUIDE FOR LOCATING TRANSFORMER AND PROTECTING SCREEN INFORMATION

### NOTES

REV.	CHANGE	APP'D	TITLE	U.G. COMMERCIAL	PREP.	DATE BY	DESIGN NO.
			CUSTOMER DESIGN				CD.006.01
					J.D.S.	G.L.K.	SHT. NO. 1 OF 2