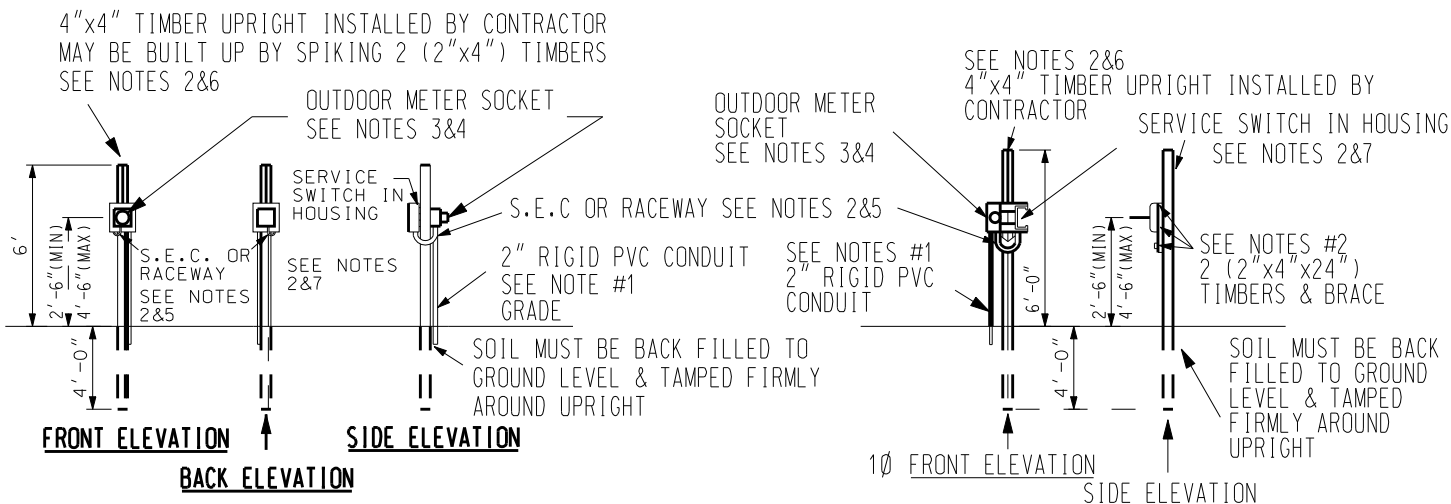


UNDERGROUND TEMPORARY SERVICE TO INDEPENDENT SUPPORT



METER SOCKET (1DIA 3DIA)	SWITCH SIZE (AMPERES)	PVC CONDUIT U.R.D	PEPCO CABLE U.R.D	CUSTOMER CABLE O.H OR U.R.D	CABLE HYLUG STOCK NO.
MD HD	100	2"	2/O AL.	#4 CU. #2 AL.	1722-30 1721-18
MD	200	2"	4/O AL.	2/O CU.	1723-91
				4/O AL.	1720-27
				250 AL.	1720-77

NOTES: UNDERGROUND TEMPORARY SERVICE (URD)

1. PEPCO TO FURNISH AND INSTALL TRENCH AND CABLE FROM TRANSFORMER OR HOLE TO CUSTOMER UPRIGHT AND PVC CONDUIT FROM FINISHED GRADE TO METER SOCKET.
2. CONTRACTOR TO FURNISH AND INSTALL UPRIGHT AND ASSOCIATED EQUIPMENT. SERVICE SWITCH AND SERVICE ENTRANCE CABLE (S.E.C.) OR RACEWAY AND CABLE FROM SWITCH TO METER SOCKET.
3. CONTRACTOR TO INSTALL METER SOCKET.
4. PEPCO TO MAKE ALL CABLE CONNECTIONS IN METER SOCKET.
5. A MINIMUM SLACK OF 24 INCHES OF S.E.C. OR 24 INCHES OF CABLE. IF RACEWAY IS USED, MUST BE LEFT FOR MAKING METER CONNECTIONS.
6. MAXIMUM PERMISSIBLE DISTANCE OF CUSTOMER'S UPRIGHT FROM PEPCO PADMOUNT OR SUBSURFACE TRANSFORMER OR BURIED BUS IS 5 FT.
7. SERVICE TO BE 1Ø-3 WIRE 120/240 OR 120/208 VOLTS FOR UP TO 200 AMP SWITCH/ 3Ø-4 WIRE 120/208 VOLT FOR UPTO 200 AMP SWITCH.
8. THE PRECEEDING IS NOT TO BE USED WITH SUBWAY TRANSFORMERS.

REFERENCES	ITEMS COVERED PROPOSED OVERHEAD AND UNDERGROUND TEMPORARY SERVICE CONNECTION FROM EXISTING SECONDARY OR TRANSFORMER FOR 200 AMPERE(MAX.)SINGLE PHASE 200 AMPERE(MAX.)THREE PHASE	NOTES
------------	---	-------

REV.	CHANGE	APP'D	TITLE TEMPORARY SERVICE CUSTOMER DESIGN	PREP.	DATE 04/23/81 BY P.W.	DESIGN NO. CD.009.02 SHT. NO. 2 OF 2