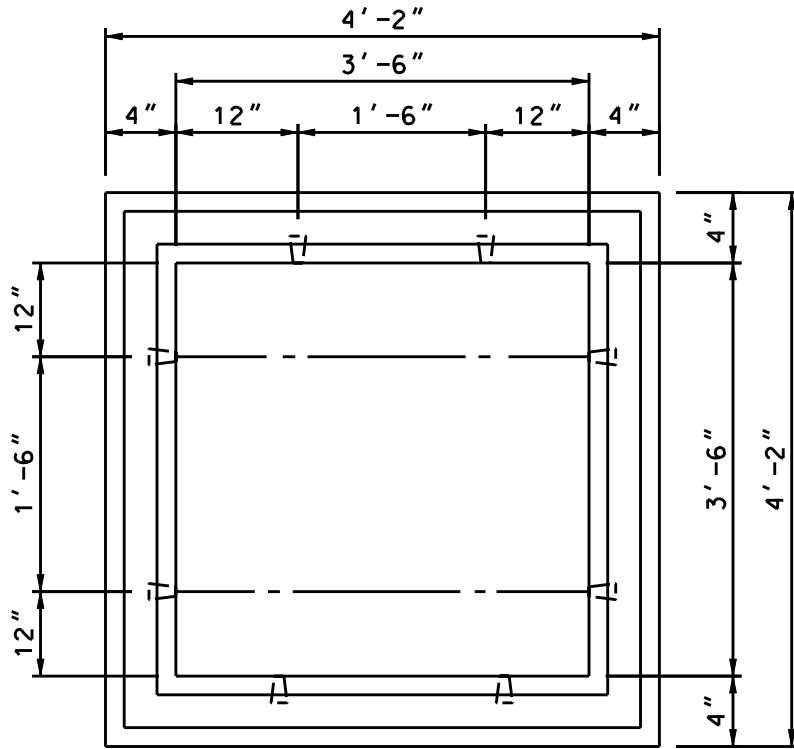
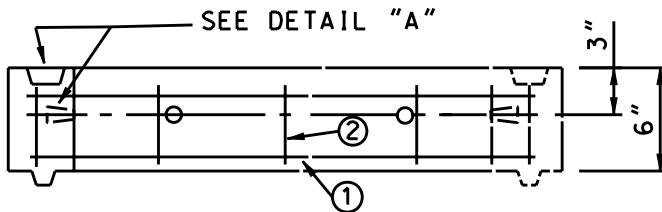


2-2-1157.1.1



TOP VIEW

REINFORCING SCHEDULE		
ROD NO.	1	2
QUANTITY	8	16
ROD SIZE	#4	#3
LENGTH	4'-0"	4"
C/C	3"	12"

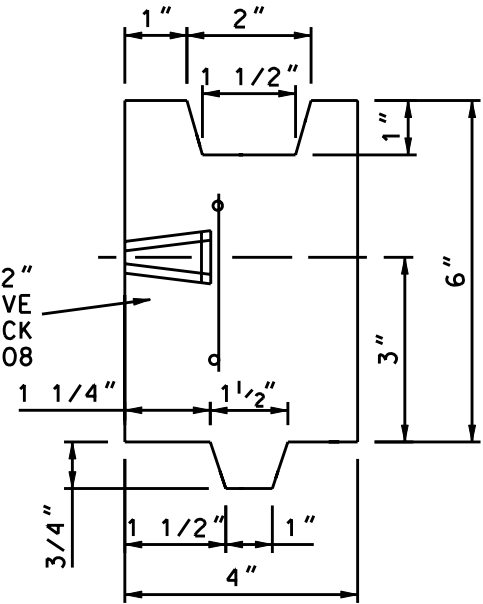


FRONT VIEW

NOTES:

- THIS DEVICE IS FOR FUTURE ADJUSTMENT TO GRADE. DO NOT USE IN PVD. SDWK.
- REFER TO DWG 4-2-1084 FOR DETAIL OF URD 3.5' X 3.5' RECTANGULAR CASING.
- REFER TO DWG. 4-2-1129 FOR 3.5' X 3.5' SDWK. ROOF.
- STOCK #9721-0767 APPROX. WT. 384 LBS. COMP UNIT MHER3535MB
- IN ROADWAY INSTALATIONS USE THE BILCO RDWY DOOR STOCK NO. 9721-0686 AS THE ROOF AND ADJUST IT TO GRADE.
- USE 4000 PSI MINIMUM STRENGTH CONCRETE.
- REV A: CHANGED DWG FORMAT AND CHANGED STOCK NO'S PER WMIS.

1/2" 13 X 2" NON-CORROSIVE INSERTS STOCK NO. 9725-0808



DETAIL "A"

DRAWN: AVI | DVLPEP: RAC | DATE: 12-12-78 | REVIEWED: CEG | DATE: 07-01-04 | APPRVD: MDW | DATE: 01-31-08 | NEXT REVIEW: 01-11 | REV: A



POWER DISTRIBUTION STANDARDS

6" EXTENSION RING 3.5' X 3.5' URD RECTANGULAR CASING