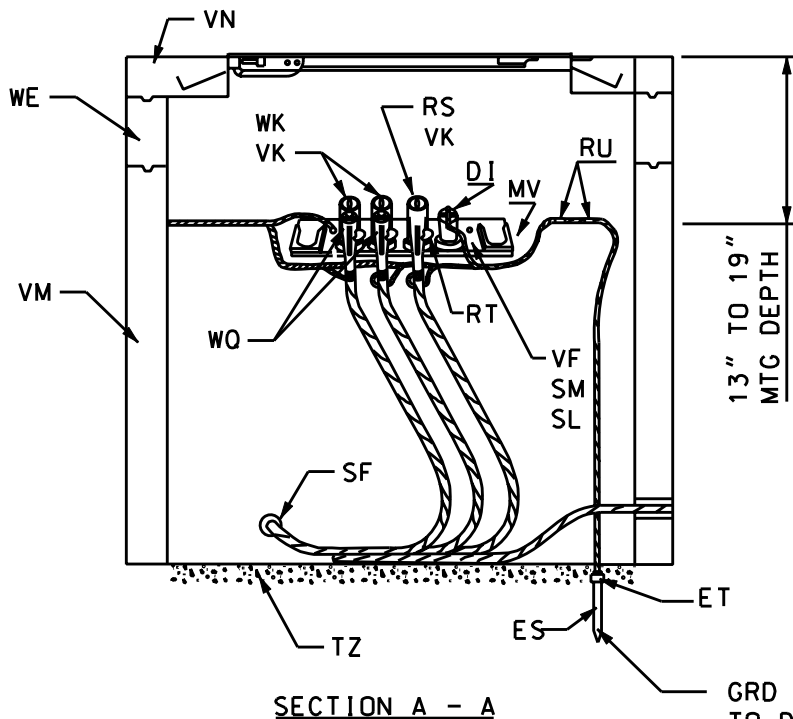


OPTIONAL GRD. ROD POSITION

NOTE: ALL MODULES ARE TO BE CENTERED AND ANGLE 45° UPWARD.



SECTION A - A

GRD ROD TO BE INSTALLED OPPOSITE TO DOOR HINGE IN ALL CASES

NOTES:

1. IF A SPARE MODULE IS REQUIRED, CALL FOR IT SEPARATELY AND INSTALL IT ON THE WALL OPPOSITE THE DOOR HINGES.
2. USE TEST POINT ELBOWS AND FAULT INDICATORS ON LOAD AND TAP CABLES. DWG 4-3-1308.
3. CRIMP THE GROUND ROD LEAD AND ALL ENERGIZED ELBOW AND BUSHING CAP PIGTAILS TO THE NEUTRAL RING.
4. WHEN ELBOW ARRESTERS ARE USED, THE ASSOCIATED INSULATING CAPS(DI) SHOULD BE REMOVED FROM THE TAPHOLE.
5. THE MH ADJUSTING RING (WE) IS NOT USED IN SDWKS WHERE FINISHED GRADE IS ESTABLISHED.
6. REV A: CHANGED DWG FORMAT.

DRAWN: AVI | DVLPED: AAT | DATE: 05-12-80 | REVIEWED:CEG | DATE: 07-08-04 | APPRVD: MDW | DATE: 02-07-08 | NEXT REVIEW: 02-11 | REV: A



POWER DISTRIBUTION STANDARDS

URD PRIMARY CABLE TAP HOLE WITH LOAD BREAK TERMINATORS

QUANTITY				DESIGNATION	DESCRIPTION	REF DWG
1	1	1	1	MHER3535MB	MH EXT RING 3.5' X 3.5' X 6" ML URB	4-2-1157
1	1	1	1	MH3535MB OR Y	MH 3.5' X 3.5' URD RECTANGULAR CASING	4-2-1084
1	1	1	1	MHR3535SMB OR Y	3.5' X 3.5' ROOF W/ BILCO DOOR STWK	4-2-1129
			1	UTAP1PHAMB OR Z	1 PH TAP MODULE INSTALLATION	
		1	1	UTAP2PHAMB OR Z	2 PH TAP MODULE INSTALLATION	
1	1			UTAP3PHAMB OR Z	3 PH TAP MODULE INSTALLATION	
				USS1TAPSB	URD PRI 1 PH TAP HOLE SDWK	
				USS1TAPSZ	1 PH 3.5' PRI TAP HOLE SDWK	
				USS2TAPSB	URD PRI 1 PH TAP HOLE SDWK	
				USS2TAPSZ	2 PH 3.5' PRI TAP HOLE SDWK	
				USS3TAPSB	URD PRI 3 PH TAP HOLE SDWK	
				USS3TAPSZ	3 PH 3.5' PRI TAP HOLE SDWK	

QUANTITY				ITEM	STOCK #	DESCRIPTION
			1	2	3	DI 9718-8123 CAP. RBR. 200A. BUSH. LB
			3	6	9	EQ 9739-0555 H.V. CABLE TAG. PLASTIC
			15	15	15	MV 9711-3211 WIRE. CU. #2 SDTBC
			1	2	3	RS 9718-8121 LB ELBOW TERMINATOR. 200A
			5	9	13	RU 9717-2473 #2 TINNED CU CRIMPET
			1	2	3	SF 9721-0785 PLUG. PLASTIC. 4" DUCT
	1					SH 9713-0103 GROUND ROD. 5/8" X 8'
			2	4	6	SL 9725-2112 BOLT. BRZ. .5" X 2.5" TN
			2	4	6	SM 9725-2127 LOCKWASHER 1/2" BRONZE
						TZ 9700-0044 BLUE STONE LBS.
3	800					UG 9700-0013 CONCRETE MIX. 4000 PSI. CU.FT.
		3				VF 9718-8019 4-WAY CABLE TAP MODULE
			3	6	9	VK 9717-2429 ELBOW CONNECTOR FOR #2 CABLE
		1				VM 9721-0617 3.5' X 3.5' PRECAST CONCRETE CASING
1						VN 9721-0694 BILCO ROOF. SDWK
		1				WE 9721-0767 RING. CONC. 3.5' X 3.5'. 6" EXT.
			2	4	6	WK 9718-8102 LB ELBOW TERMINATOR W/ T.P.
			2	4	6	WQ 9718-8117 FAULT IND. T.P. ELBOW
						DESIGNATION DESCRIPTION
						UTAP3PHAMB OR Z 3 PH TAP MODUL 15KV TS 32 ML URB
						UTAP2PHAMB OR Z 2 PH TAP MODUL 15KV TS 31 ML URB
						UTAP1PHAMB OR Z 1 PH TAP MODUL 15KV TS 30 ML URB
						MHER3535MB MH EXT RING 3.5' X 3.5' X 6" ML URB
						MH3535MB OR Y MH 3.5' X 3.5' PRI TAP D6-11 ML URB
						MHR3535SMB OR Y 3.5' X 3.5' ROOF W/ DOOR SW ML URB

## NOTES:

- WHEN WORK IS TO BE DONE BY U.G., ENGINEERING ASSEMBLIES WILL BE DESIGNATED - USS1TAPSZ, USS2TAPSZ, USS3TAPSZ
- REV A: CHANGE DWG FORMAT AND CHANGED STOCK NO'S PER WMIS.

DRAWN: AVI | DVLPED: AAT | DATE: 05-12-80 | REVIEWED: CEG | DATE: 07-08-04 | APPRVD: MDW | DATE: 02-07-08 | NEXT REVIEW: 02-11 | REV: A



POWER  
DISTRIBUTION  
STANDARDS

URD PRIMARY CABLE TAP HOLE  
ENGINEERING ASSEMBLIES &  
COMPATIBLE UNITS BREAKDOWN