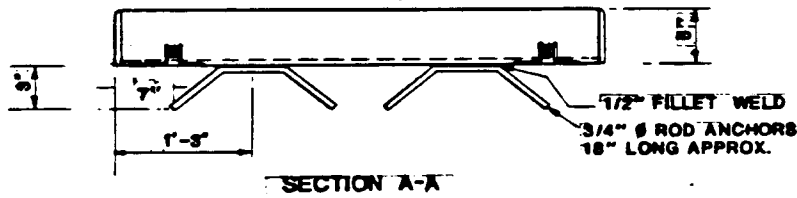
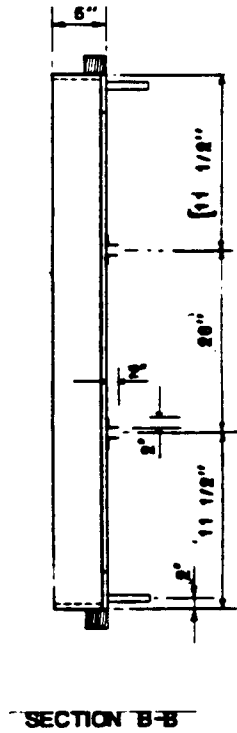
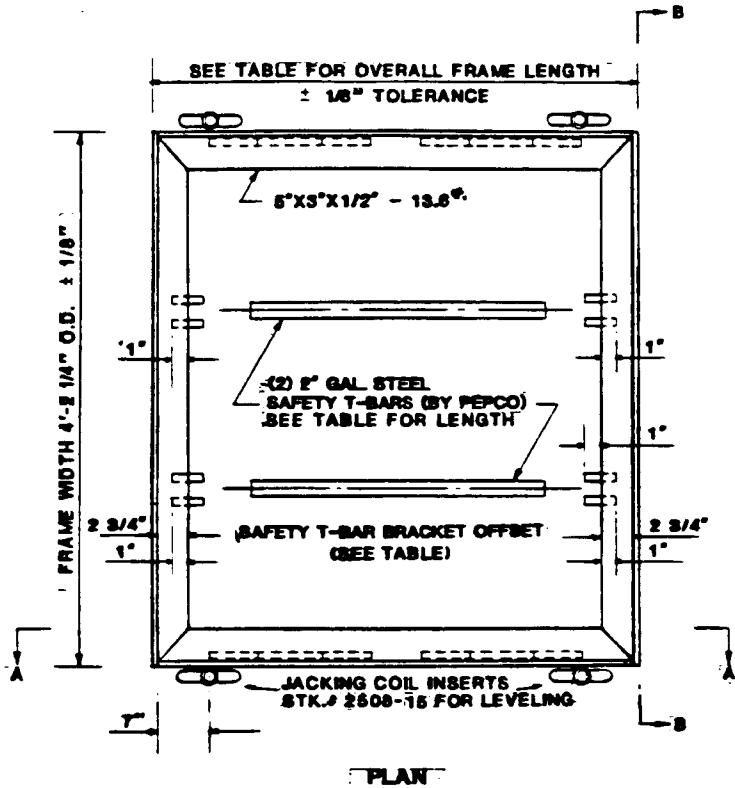
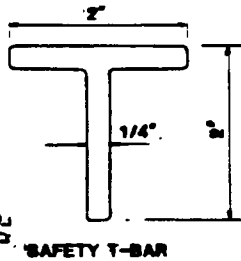


COMPATIBLE UNIT	FRAMES			SAFETY BARS		BAR BRACKET
	STOCK NO.	LENGTH O.D.	WEIGHT	LENGTH	OFFSET	
MHGF4XPRMY	2106-36	60 1/4"x46"	231 LBS.	3'-2 3/4"	2 3/4"	



NOTES

1. ALL 4 SIDES TO LIE IN SAME PLANE AND NOT TO BE TWISTED OR BENT.
 2. AFTER ALL SHOPWORK, GALVANIZE TO CONFORM TO ASTM A-123 LATEST REVISION.
 3. WHEN MAINTENANCE IS REQUIRED, THE COATING DIRECTION SHOULD BE UPGRADED TO THE NEW STANDARD THAT COMPLY WITH ADA REQUIREMENTS.
- THIS DWG. SUPERSEDES DWGS. 6-1-508



MANHOLE GRATING FRAMES
FOR 4' ROADWAY GRATINGS.
POTOMAC ELECTRIC POWER CO.
T AND D ENGINEERING
DATE 10-22-79 DWG. NO. 6-T-TT15

APPROVED	REVISIONS	APPROVED	REVISIONS	APPROVED	REVISIONS	APPROVED	REVISIONS
DR. HARA	7/1/79	DR. HARA	7/1/79	DR. HARA	7/1/79	DR. HARA	7/1/79
SCALE	NONE	SCALE	NONE	SCALE	NONE	SCALE	NONE