

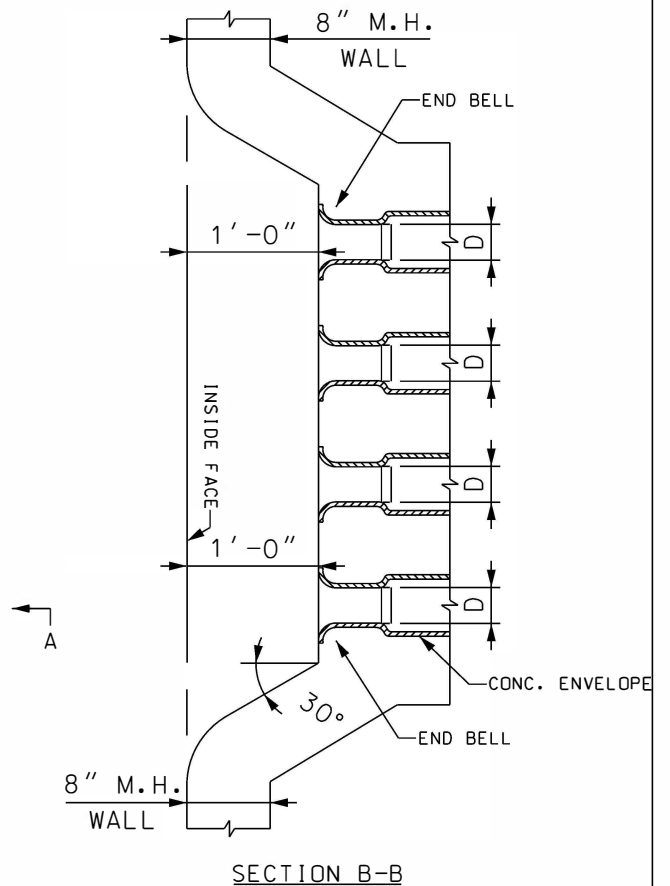
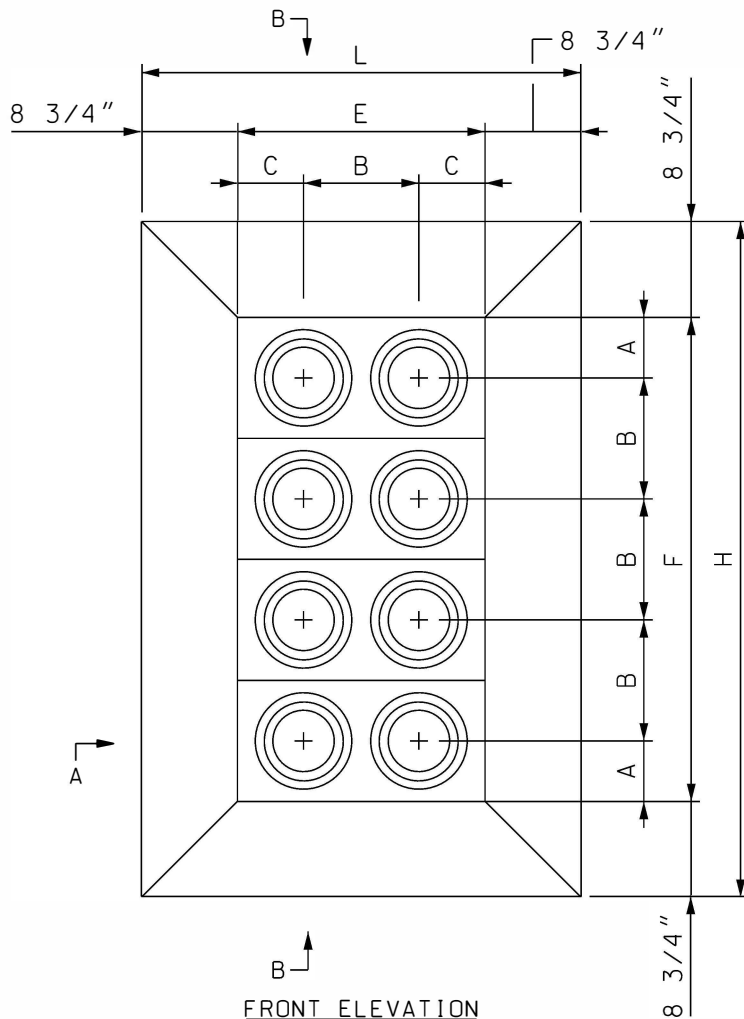
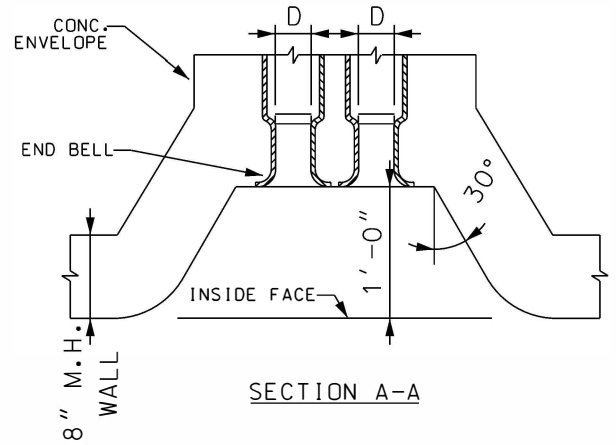
NOTES:

1. D: NOMINAL INSIDE DIAMETER

D (IN)	A (IN)	B (IN)	C (IN)	E (IN)	F (IN)	L (IN)	H (IN)
4	5 1/4	6	4 1/4	14 1/2	28 1/2	32	46
5	5 3/4	7	4 3/4	16 1/2	32 1/2	34	50
6	5 1/4	8	5 1/4	18 1/2	36 1/2	36	54

2. ALL DUCT ENTRANCES SHALL BE CONSTRUCT WITH A FULL FLARE AS SHOWN.

3. COMPATIBLE UNIT MHREC8WMY SHALL BE USED WHEN CONSTRUCTION DUCT ENTRANCES 8-WAY AND SMALLER. COMPATIBLE UNIT MHREC9WMY SHALL BE USED WHEN CONSTRUCTION DUCT ENTRANCES 9-W AND LARGER. (PEPCO'S CU)



DRAWN: DPJ | DVLPED: MDM | DATE: 06-31-86 | REVIEWED: RDS | DATE: 9/1/15 | APPRVD: AAT | DATE: 9/1/15 | NEXT REVIEW: 9/19 | REV: B



DISTRIBUTION  
STANDARDS

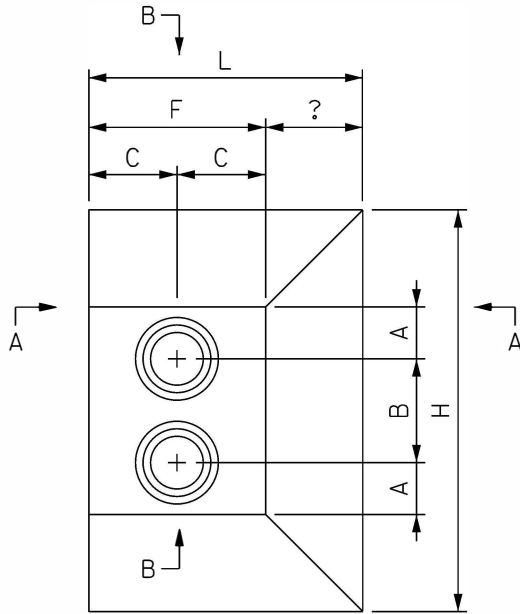
MANHOLE RECESS

NOTES:

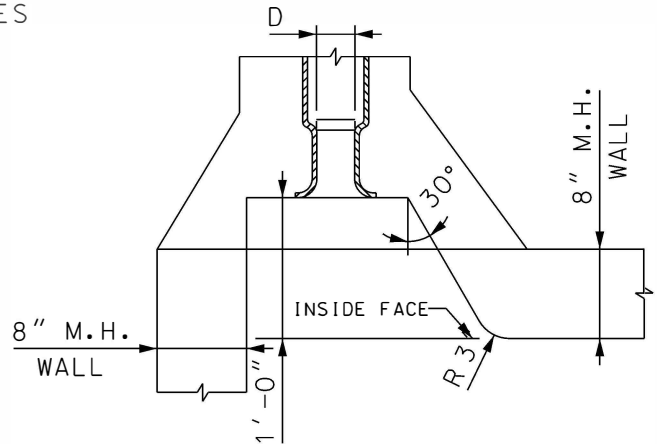
1. D: NOMINAL INSIDE DIAMETER

D (IN)	A (IN)	B (IN)	C (IN)	H (IN)	L (IN)	F (IN)
4	5 1/4	6	4 1/4	34	17 1/4	8 1/4
5	5 3/4	7	4 3/4	36	18 1/4	9 1/4
6	6 1/4	8	5 1/4	38	19 1/4	10 1/2

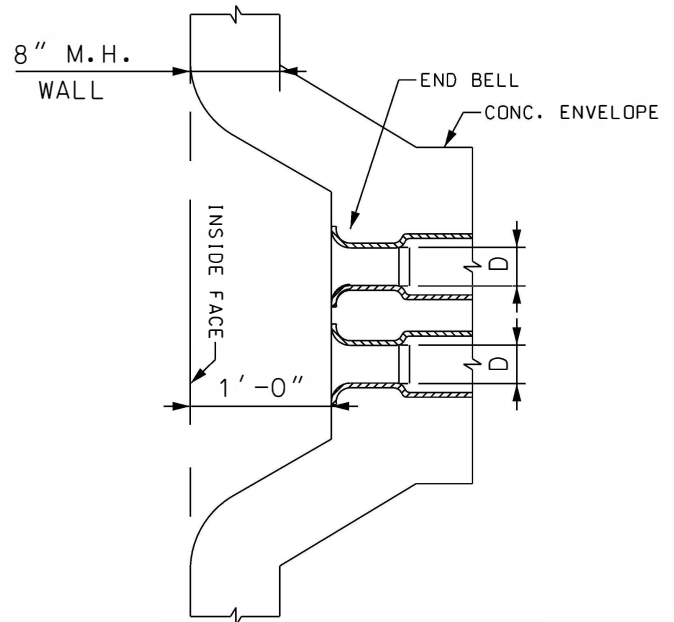
2. COMPATIBLE UNIT MHREC8WMY SHALL BE USED WHEN CONSTRUCTION DUCT ENTRANCES 8-WAY AND SMALLER. COMPATIBLE UNIT MHREC9WMY SHALL BE USED WHEN CONSTRUCTION DUCT ENTRANCES 9-WAY AND LARGER. (PEPCO'S CU)



FRONT ELEVATION



SECTION A-A



SECTION B-B

DRAWN: DPJ | DVLPEP: MDM | DATE: 06-31-86 | REVIEWED:RDS DATE: 9/1/15 | APPRVD: AAT DATE: 9/1/15 | NEXT REVIEW: 9/19 | REV: B



DISTRIBUTION  
STANDARDS

MANHOLE CORNER RECESS