

#3 DEF ROD

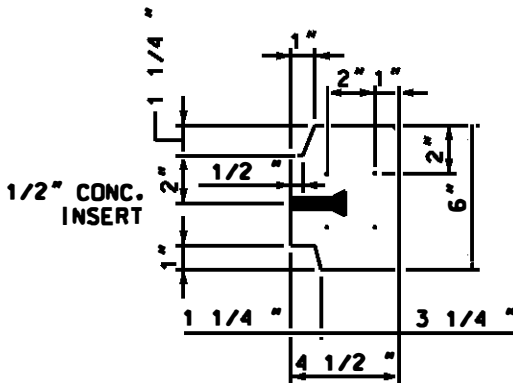
- ① 43" LONG (16)
- ② 24" LONG (8)
- ③ 18" LONG (2)

1-1/4" X 1-1/4" X 1/4" L X 4" LONG  
WELDED TO ITEM #3 ROD  
GALV AFTER WELDING

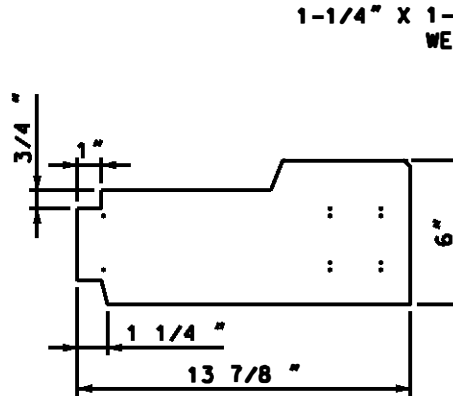
CHAMFER ALL EXTERNAL SHARP CORNERS  
STOCK NO 9721-0689

NOTES:

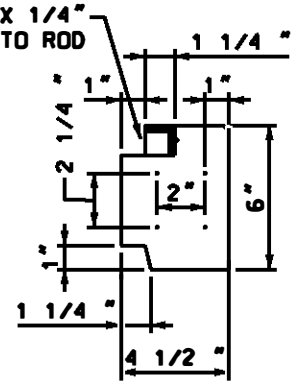
1. COMPATIBLE UNIT DESIGNATION:  
SSTRGFMB OR Y
2. REV A: CHANGED STOCK NO FOR  
WMIS AND DWG FORMAT.



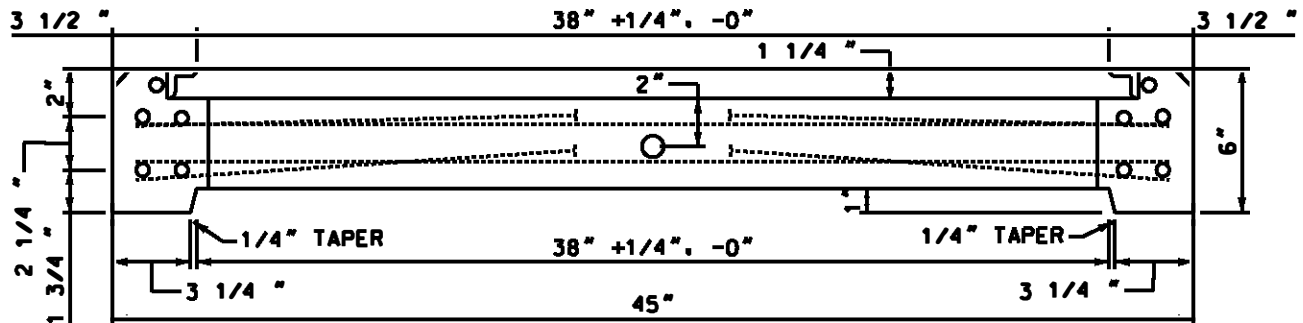
SEC A-A



SEC B-B



SEC C-C



SEC ON CL WITH C-C

DRAWN: AVI | DVLPEP: CEG | DATE: 05-24-72 | REVIEWED: RDS | DATE: 09/01/15 | APPRVD: AAT | DATE: 09/01/15 | NEXT REVIEW: 09/19 | REV: A



POWER  
DISTRIBUTION  
STANDARDS

CONCRETE GRATING FRAME FOR  
URD SUBSURFACE ENCLOSURE