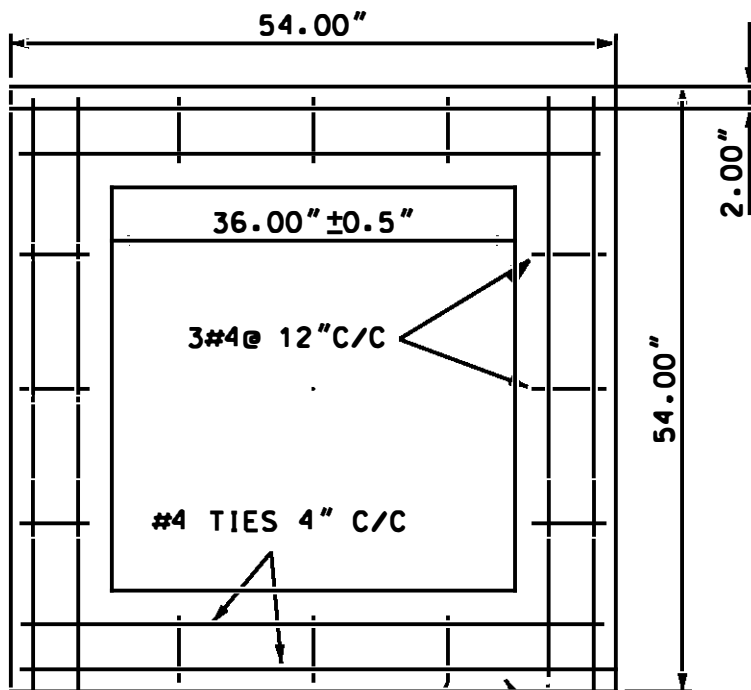
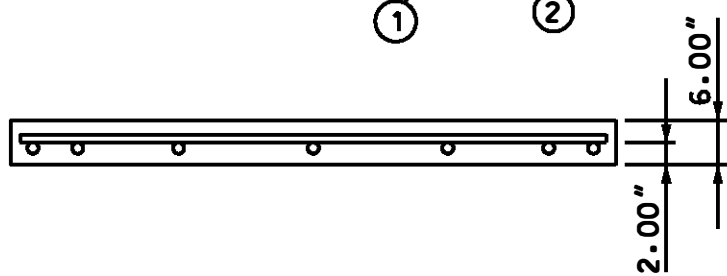


BILCO TYPE DOOR
STOCK NO. 9721-0676
(SEE NOTE 5)

CONCRETE SLAB ASSEMBLY
STOCK NO. 9721-0684
COMPATIBLE UNIT MHR3535SMB



REINFORCING SCHEDULE		
ROD NO.	1	2
QUANTITY	12	8
SIZE	#4	#4
LENGTH	6"	4'-4"



NOTES:

- ONE COAT OF BITUMINOUS COATING ON SURFACE THAT WILL COME IN CONTACT WITH CONCRETE.
- OUTSIDE OF MANHOLE UNDER THE FRAME REQUIRES 6" OF COMPACTED STONE.
- ULTIMATE STRENGTH OF CONCRETE - 4000 PSI
- REINFORCING STEEL ASTM 615 GRADE 60.
- DOOR SHALL BE DESIGNED FOR A LIVE LOAD OF 300 LB / SD. FT PER NESC GUIDELINES.
- REV A: CHANGED DWG FORMAT AND CHANGED STOCK NO'S PER WMIS.

DRAWN: AVI | DVLPE: RAC | DATE: 05-03-78 | REVIEWED: RDS | DATE: 09/01/15 | APPRVD: AAT | DATE: 09/01/15 | NEXT REVIEW: 09/19 | REV: A



POWER
DISTRIBUTION
STANDARDS

BILCO DOOR SDWK ROOF FOR
3.5' x 3.5' URD RECTANGULAR CASING