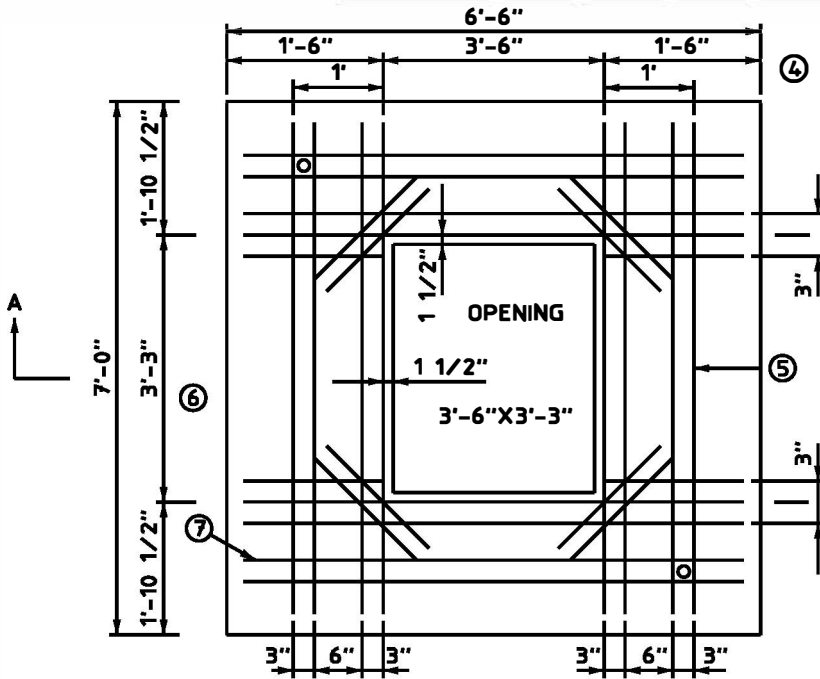
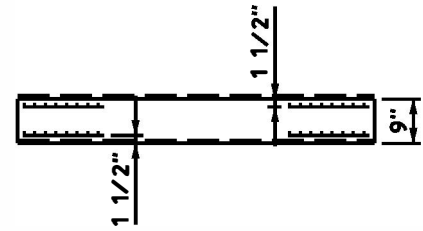


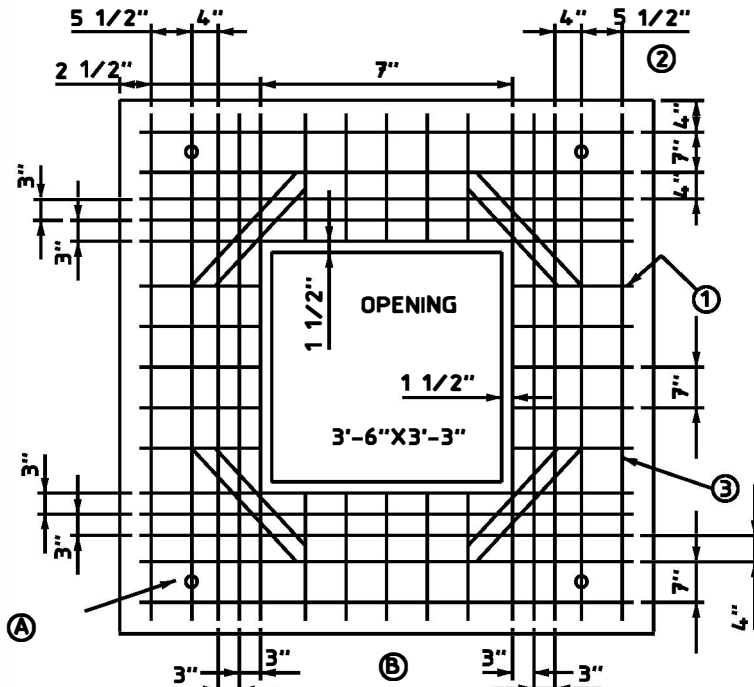
REINFORCING SCHEDULE								
6' X 6' PRECAST ROOF								
LOCATION	9"							
DEPTH	9"							
ROD NO.	1	2	3	4	5	6	7	8
QUANTITY	10	10	10	16	8	4	8	10
SIZE	#6	#6	#6	#3	#3	#3	#3	#6
LENGTH	1'-4"	6'-3"	6'-9"	2'-0"	6'-9"	1'-4"	6'-3"	1'-7"



PLAN OF TOP REINFORCING



SECTION A-A



PLAN OF BOTTOM REINFORCING

Ⓐ INSTALL SUPERIOR SINGLE PICK-UP INSERTS-TYPE 1,4 REQUIRED.

NOTES:

- TOTAL WEIGHT - 4200 LBS
TOTAL CONCRETE - 1.1 CUBIC YD.
6 BAG MIX, 3500 PSI AT 28 DAYS.
- STOCK # 9721-0564
- ROOF TO BE INSTALL WITH 12" MINIMUM COVER.
- POSITION ROOF WITH 3'-6" OPENING DIMENSION IN DIRECTION OF TRAFFIC
- REV A: CHANGED DWG FORMAT, CHANGED STOCK NO'S PER WMIS.

DRAWN: AIPL | DVLPED: CEC | DATE: 4/23/79 | REVIEWED: RDS DATE: 9/01/15 | APPRVD: AAT DATE: 9/01/15 | NEXT REVIEW: 09/19 | REV: A



POWER
DISTRIBUTION
STANDARDS

PRECAST ROADWAY ROOF
FOR 6' X 6' MANHOLE