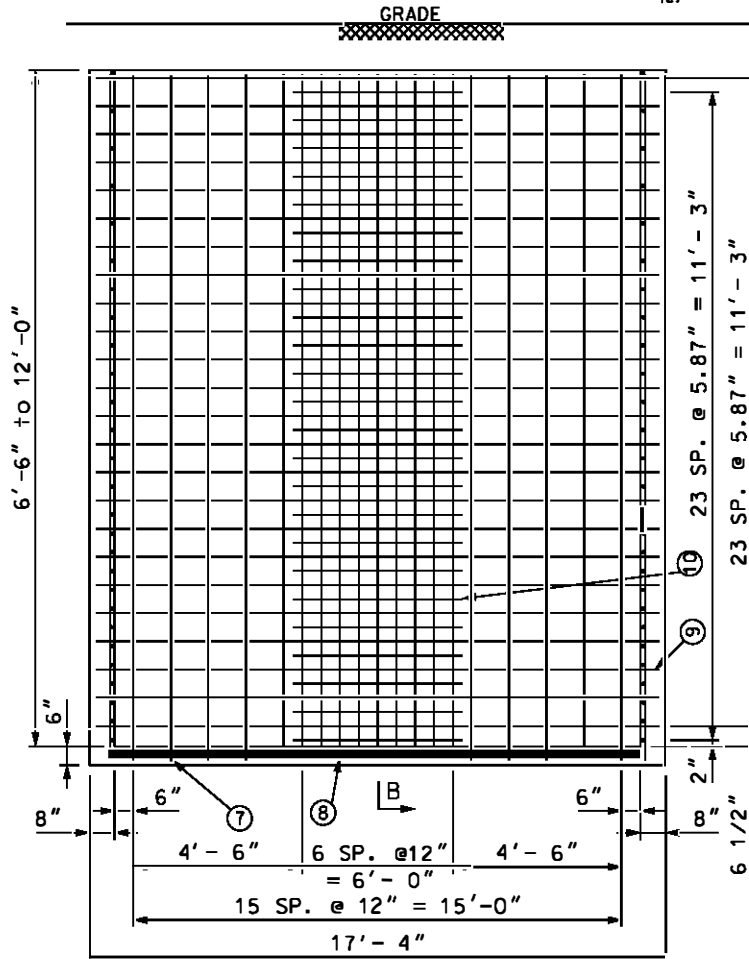
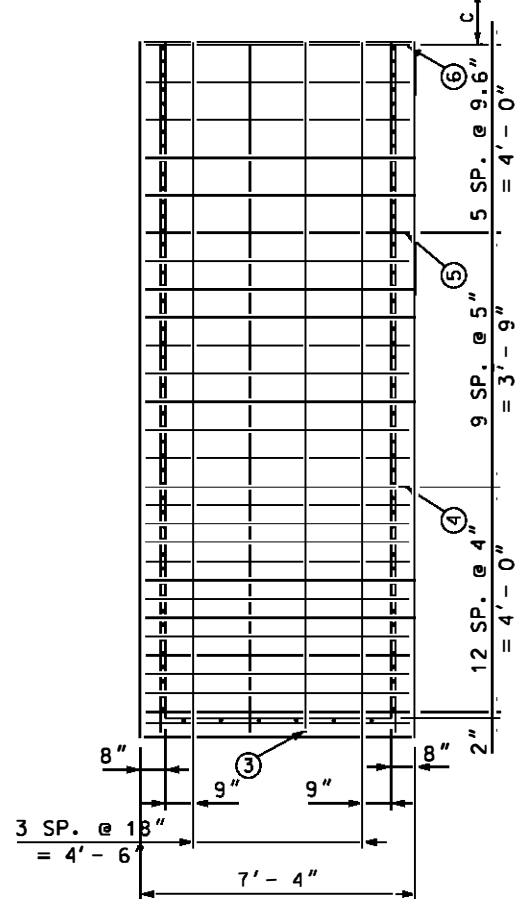


FLOOR PLAN

C = RECESSED RDWY.	21" MIN.
RECESSED SDWK.	18" MIN.
FLUSH RDWY.	9" MIN.
FLUSH SDWK.	6" MIN.



SIDE ELEVATION



END ELEVATION

NOTES:

1. SP = SPACES.
NUMBER IN CIRCLE INDICATES RODS IN STEEL SCHEDULE.
2. INSTALL SUMP PUMP PIT, GROUND ROD AND GUTTER ON LV END OF MANHOLE PER DWGS 2-2-1096 AND 2-2-1060 FOR TRANSFORMER MANHOLES.
3. TRANSFORMER-TO-BUS TIE CONDUITS SHOULD LEAVE THE TRANSFORMER MANHOLE (2 HORIZONTAL 3 OR 4 VERTICAL) WITH 3' OF COVER THE CONDUITS SHOULD ENTER THE BUS MANHOLE NEAR A CORNER ON THE LONG WALL WITH THE TOP CONDUITS A MINIMUM OF 3' BELOW CEILING.
4. WHEN INSTALLING MANHOLES END TO END OR SIDE BY SIDE A MINIMUM OF 1' IS REQUIRED INSIDE WALL TO INSIDE WALL OF ABUTTING MANHOLES.

DRAWN: DPJ DVLPE: FLM DATE: 04-15-88 | REVIEWED: RDS DATE: 09/01/15 | APPRVD: AAT DATE: 09/01/15 | NEXT REVIEW: 09/19 | REV: B



POWER
DISTRIBUTION
STANDARDS

6'-0" X 16'-0" MANHOLE
(CAST IN PLACE)

FLOOR REINFORCING SCHEDULE

FLOOR (6" THICK)		
ITEM NO.	1	2
QUANTITY	16	6
ROD SIZE	#3	#3
C/C	12"	12"
LENGTH	7'-0"	17'-0"

CONCRETE SCHEDULE

FLOOR 64 FT³
WALLS 31 FT³

MANHOLE WALLS REINFORCING SCHEDULE
(ALL WALLS ARE 8" THICK)

DEPTH	6'-6" DC							
ITEM NO.	3	4	5	6	7	8	9	10
QUANTITY	8	-	2	12	32	14	18	-
ROD SIZE	#4	-	#5	#4	#5	#4	#6	-
C/C	18"	-	9"	12"	12"	12"	9"	-
LENGTH	6'-9"	-	7'-0"	7'-0"	6'-9"	6'-9"	17'-0"	-

DEPTH	8'-0" DC							
ITEM NO.	3	4	5	6	7	8	9	10
QUANTITY	8	-	6	12	32	14	22	-
ROD SIZE	#4	-	#5	#4	#5	#4	#6	-
C/C	18"	-	9"	12"	12"	12"	9"	-
LENGTH	8'-3"	-	7'-0"	7'-0"	8'-3"	8'-3"	17'-0"	-

DEPTH	9'-0" DC							
ITEM NO.	3	4	5	6	7	8	9	10
QUANTITY	8	-	10	12	32	14	24	-
ROD SIZE	#4	-	#5	#4	#5	#4	#6	-
C/C	18"	-	9"	12"	12"	12"	9"	-
LENGTH	9'-3"	-	7'-0"	7'-0"	9'-3"	9'-3"	17'-0"	-

DEPTH	10'-0" DC							
ITEM NO.	3	4	5	6	7	8	9	10
QUANTITY	8	-	12	12	32	14	28	-
ROD SIZE	#4	-	#5	#4	#5	#4	#6	-
C/C	18"	-	9"	12"	12"	12"	9"	-
LENGTH	10'-3"	-	7'-0"	7'-0"	10'-3"	10'-3"	17'-0"	-

DEPTH	11'-0" DC							
ITEM NO.	3	4	5	6	7	8	9	10
QUANTITY	8	-	14	12	32	14	30	30
ROD SIZE	#4	-	#5	#4	#5	#4	#6	#4
C/C	18"	-	9"	12"	12"	12"	9"	9"
LENGTH	11'-3"	-	7'-0"	7'-0"	11'-3"	11'-3"	17'-0"	6'-6"

(CONTINUE ON SHT. 3 OF 5)

DRAWN: DPJ DVLPED: FLM DATE: 04-15-88 REVIEWED: RDS DATE: 09/01/15 APPRVD: AAT DATE: 09/01/15 NEXT REVIEW: 09/19 REV: A



POWER
DISTRIBUTION
STANDARDS

6'-0" X 16'-0" MANHOLE
(CAST IN PLACE)

MANHOLE WALLS REINFORCING SCHEDULE (CONTINUE)
 (ALL WALLS ARE 8" THICK)

DEPTH	12'-0" DC							
ITEM NO.	3	4	5	6	7	8	9	10
QUANTITY	8	-	18	12	32	14	32	32
ROD SIZE	#4	-	#5	#4	#5	#4	#6	#4
C/C	18"	-	9"	12"	12"	12"	9"	9"
LENGTH	12'-3"	-	7'-0"	7'-0"	12'-3"	12'-3"	17'-0"	6'-6"

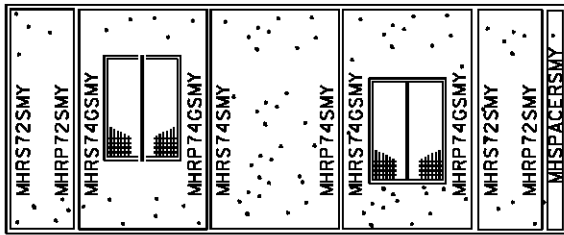
DRAWN: DPJ DVLPED: FLM DATE: 04-15-88 REVIEWED: RDS DATE: 09/01/15 APPRVD: AAT DATE: 01/09/15 NEXT REVIEW: 09/19 REV: A



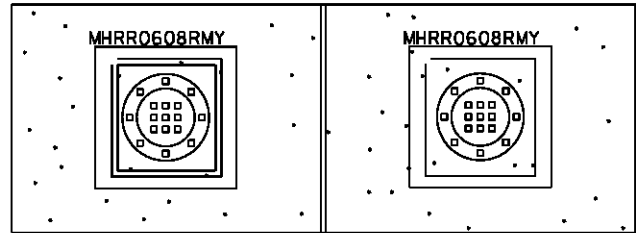
POWER
DISTRIBUTION
STANDARDS

6'-0" X 16'-0" MANHOLE
(CAST IN PLACE)

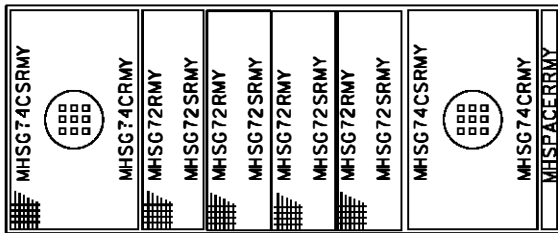
MANHOLE ROOFS



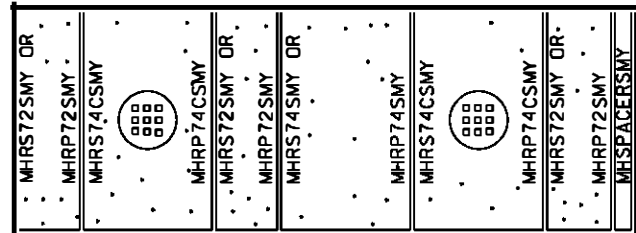
MH0616VS
MH0616VPS (SEE NOTE 2)



MH0616RR



MH0616VR
MH0616VRS (SEE NOTE 1)



MH0616S
MH0616PS

NOTES:

1. ENGINEERING ASSEMBLY MH0616VRS SHALL BE CALLED FOR WHEN A ROAD WAY MANHOLE IS TO BE LOCATED IN THE SIDEWALK. COMPATIBLE UNITS MHSG74CRM AND MHSG72RM ARE REPLACED BY MSG74CRM AND MHSG72SRM FOR ENGINEERING ASSEMBLY MH0616VRS.
2. WHEN ENGINEERING ASSEMBLIES MH0616VPS OR MH0616PS ARE REQUIRED THE SIDEWALK SLABS ARE REPLACED WITH THE PAVER PANS OF THE CORRESPONDING CONSTRUCTION.

DRAWN: DPJ DVLPE: FLM DATE: 04-15-88 REVIEWED: RDS DATE: 09/01/15 APPRVD: AAT DATE: 09/01/15 NEXT REVIEW: 09/15 REV: A



POWER
DISTRIBUTION
STANDARDS

6'-0" X 16'-0" MANHOLE
ROOFS (CAST IN PLACE)

ENGINEERING ASSEMBLY BREAKDOWN FOR 6' X 16' MANHOLES								
QUANTITY				DESIGNATION	DESCRIPTION	REF DWG	STOCK NO.	
2	2		2		MHC28MY	MH COVER 28" ML CO	2-2-0431	9721-0637
			2		MHDACMY	MH DBL ACT COVER ML CO	2-2-0434	9721-0640
			2		MHDAFRMY	MH DBL ACT COVER FR RDWY ML CO	2-2-0427	9721-0611
			1	1	MHRF0616RMY	MH RF FRAME 6X16 RDWY ML CO	2-2-1184	9700-2302
1	1	1		1	MHRF0616SMY	MH RF FRAME 6X16 SDWK ML CO	2-2-1184	9721-0209
			2		MHRR0608RMY	MH RECESSED ROOF 6X8 RDWY ML CO	2-2-1143	9721-0565
		2		2	MHRS72SMY	MH RF SLAB 7X2 SDWK ML CO	2-2-1177	9721-0648
		2		2	MHRS74GSMY	MH RF SLAB 7X4 DR GRT SDWK ML CO	2-2-1327	9721-0663
		2			MHRS74CSMY	MH RF SLAB 7X4 SAC SDWK ML CO	2-2-1327	9721-0662
		1		1	MHRS74SMY	MH RF SLAB 7X4 SDWK ML CO	2-2-1327	9721-0661
2	2				MHRP72SMY	MH RF SLAB PAN 7X2 SDWK ML CO	2-2-1177	9721-0214
1	1				MHRP74SMY	MH RF SLAB PAN 7X4 SDWK ML CO	2-2-1327	9721-0222
2					MHRP74CSMY	MH RF SLAB PAN 7X4 SAC SDWK ML CO	2-2-1327	9721-0223
		2			MHRP74GSMY	MH RF SLAB PAN 7X4 DRGRT SDWK MLCO	2-2-1327	9721-0221
			4		MHSG72RMY	MH SLAB GRT 7X2 RDWY ML CO	2-2-1163	9721-0620
			4		MHSG72SRMY	MH SLAB GRT 7X2 SP RDWY ML CO	2-2-1163	9721-0238
			2		MHSG74CRMV	MH SLAB GRT 7X4 SAC RDWY ML CO	2-2-1351	9721-0658
		2			MHSG74CSRMY	MH SLAB GRT 7X4 SAC SP RDWY ML CO	2-2-1351	9721-0659
1	1	1		1	MHSPACERSMY	MH SPACER FOR SDWK MH ML CO	2-5-1386	9721-0669
			1	1	MHSPACERRMY	MH SPACER FOR RDWY MH ML CO	2-5-1386	9721-0668
1	1		1		MHO616MY	MH 6X16X6.5 DC ML CO	2-2-1149	-
		1	1	1	MHO616VMY	MH 6X16 VENT 10' DC ML CO	2-2-1149	-
DESCRIPTION								
					MHO616VS	MH 6X16 VENT SDWK TYPE		
					MHO616VR	MH 6X16 VENT ROWY TYPE		
					MHO616RR	MH 6X16 RECESSED TYPE		
					MHO616VRS	MH 6X16 VENT RDWY FOR SDWK TYPE		
					MHO616VPS	MH 6X16 VENT PAVERS SDWK TYPE		
					MHO616S	MH 6X16 SDWK TYPE		
					MHO616PS	MH 6X16 PAVERS SDWK TYPE		

DRAWN: DPJ DVLPEP: FLM DATE: 12-05-88 REVIEWED:RDS DATE: 09/01/15 APPRVD: AAT DATE: 09/01/15 NEXT REVIEW: 09/15 REV: A



POWER
DISTRIBUTION
STANDARDS

6'-0" X 16'-0" MANHOLE
ENGINEERING ASSEMBLIES BREAKDOWN