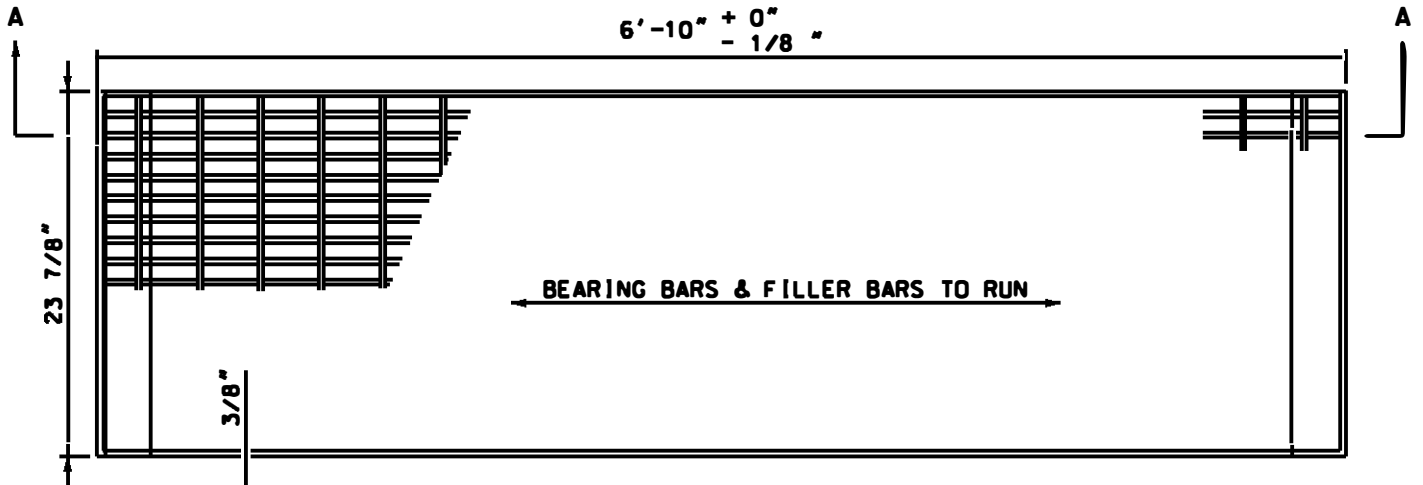
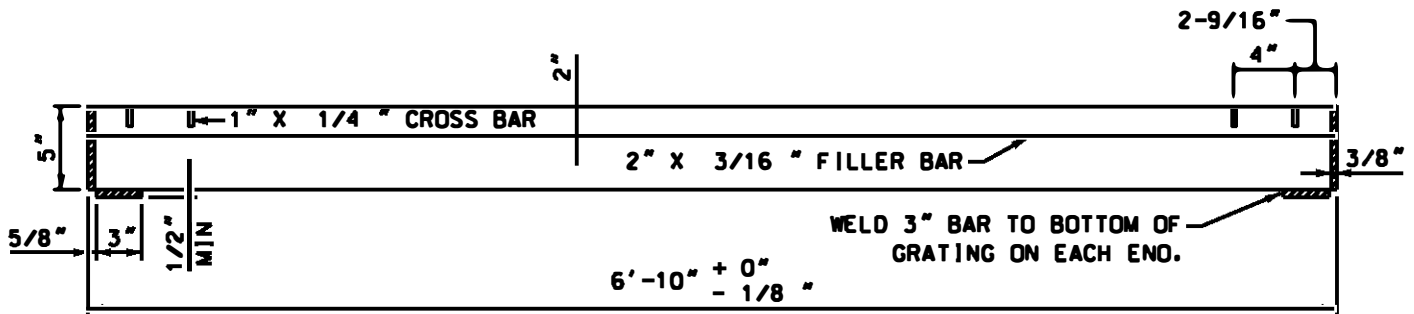


ALL BEARING BARS 5" X 3/8" ON 1-3/8" CENTER.
 ALL SPECIAL GRATING FILLER BARS 2" X 3/16" ON SAME CENTERS.
 ALL BARS FLUSH WITH TOP.



PLAN



SECTION A-A

NOTES:

1. GRATING TO WITHSTAND AASHTO H-20 LOADING AS A MINIMUM. MANUFACTURER TO SPECIFY MAXIMUM STRESS USED.
2. MANUFACTURER TO USE A-36 STEEL OR APPROVED EQUIVALENT.
3. GRATING TO BE WELDED TYPE OR APPROVED EQUIVALENT.
4. ALL MATERIAL TO BE GALVANIZED AFTER SHOP WORK AND SHALL CONFORM TO THE LATEST REVISION OF A.S.T.M. A-123.
5. STOCK NUMBER 9721-062D.
6. APPROXIMATE WEIGHT 800#.
7. COMPATIBLE UNIT DESIGNATION MMSG72SRMY.
8. THE FACE OF THE 3" X 1/2" BAR ON THE BOTTOM OF THE GRATING IS TO BE GROUND TO A TRUE PLANE AND THEN GALVANIZED AND SMOOTHED OFF.

SPECIAL GRATING NOTES:

1. SPECIAL GRATINGS TO BE USED ONLY IN AREAS DESIGNATED FOR PEDESTRIAN TRAFFIC.
2. SPECIAL GRATINGS ARE INTERCHANGEABLE WITH STANDARD GRATINGS. THEY DIFFER ONLY IN A 2" X 3/16" FILLER BAR BETWEEN EACH OF THE BEARING BARS.
3. STOCK NUMBER 9721-0238.
4. APPROXIMATE WEIGHT 969 lbs.
5. COMPATIBLE UNIT DESIGNATION MMSG72SRMY.
6. WHEN INSTALLED IN WALK AREAS, BEARING BARS ARE TO BE AT RIGHT ANGLE TO THE PREDOMINANT DIRECTION OF PEDESTRIANS TRAVEL. TO BE IN COMPLIANCE WITH ADA REQUIREMENTS.
7. REV A: CHANGE STOCK # PER WMIS; CHANGED DWG. FORMAT
8. REV B: CHANGED DWG FORMAT.
9. BASE PLATE TO BE FLUSH WITH GRATING.

DRAWN: AVI | DVLPED: PRS | DATE: 06-13-94 | REVIEWED: RDS | DATE: 09/01/15 | APPRVD: AAT | DATE: 09/01/15 | NEXT REVIEW: 09/19 | REV: B



POWER
DISTRIBUTION
STANDARDS

2' X 6'-10" SLAB GRATING
FOR ROADWAY MANHOLES