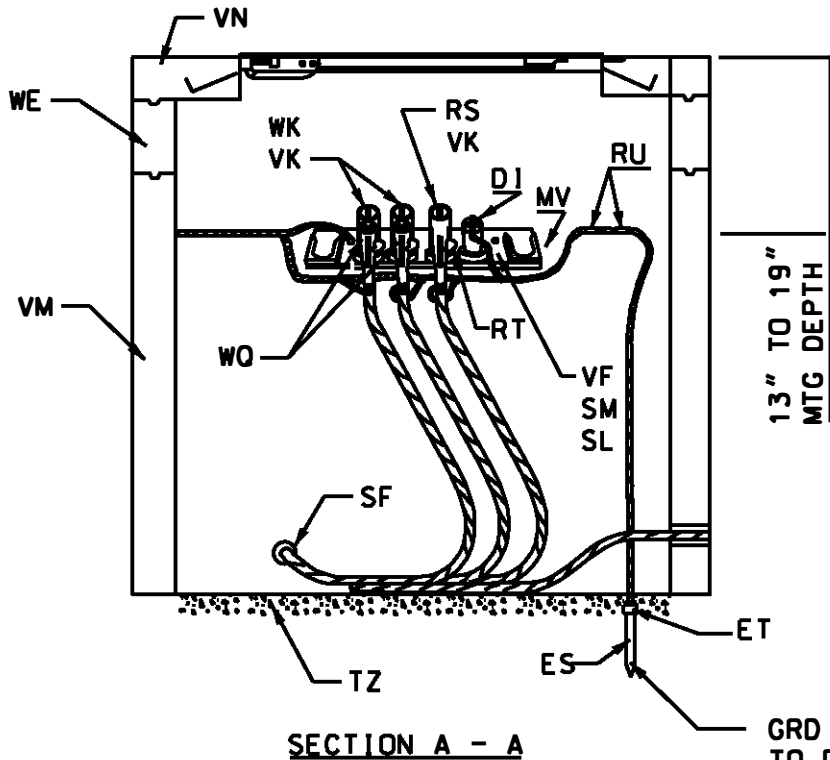


OPTIONAL GRO. ROD POSITION

NOTE: ALL MODULES ARE TO BE CENTERED AND ANGLE 45° UPWARD.

NOTES:

1. IF A SPARE MODULE IS REQUIRED, CALL FOR IT SEPARATELY AND INSTALL IT ON THE WALL OPPOSITE THE DOOR HINGES.
2. TEST POINT ELBOWS ARE NO LONGER USED SINCE THE CHANGE TO THE NEW STYLE OF FCI. SEE DRAWING 1308 & 1741.
3. CRIMP THE GROUND ROD LEAD AND ALL ENERGIZED ELBOW AND BUSHING CAP PIGTAILS TO THE NEUTRAL RING.
4. WHEN ELBOW ARRESTERS ARE USED, THE ASSOCIATED INSULATING CAPS(DI) SHOULD BE REMOVED FROM THE TAPHOLE.
5. THE MH ADJUSTING RING (WE) IS NOT USED IN SDWKS WHERE FINISHED GRADE IS ESTABLISHED.
6. REV A: CHANGED DWG FORMAT.
7. REV B: UPDATE STOCK NUMBERS AND CU'S.



GRD ROD TO BE INSTALLED OPPOSITE TO DOOR HINGE IN ALL CASES

DRAWN: AVI | DVLPEO: AAT | DATE: 05-12-80 | REVIEWED:RDS | DATE: 5/9/2017 | APPRVD: BS | DATE: 5/9/2017 | NEXT REVIEW: 05/22 | REV: 8



POWER DISTRIBUTION STANDARDS

URD PRIMARY CABLE TAP HOLE WITH LOAD BREAK TERMINATORS

CU MACROS FOR URD TAP HOLE INSTALLATIONS

QUANTITY	DESIGNATION	DESCRIPTION	REF DWG
1	MHER3535MB	MH EXT RING 3.5' X 3.5' X 6" ML URB	1157
1	MH3535MB OR Y	MH 3.5' X 3.5' URD RECTANGULAR CASING	1084
1	MHR3535SMB OR Y	3.5' X 3.5' ROOF W/ BILCO DOOR STWK	1129
	UTAP1PHAMB OR Z	1 PH TAP MODULE INSTALLATION	
	UTAP2PHAMB OR Z	2 PH TAP MODULE INSTALLATION	
	UTAP3PHAMB OR Z	3 PH TAP MODULE INSTALLATION	
	USS1TAPSB	URD PRI 1 PH TAP HOLE SDWK	
	USS1TAPSZ	1 PH 3.5' PRI TAP HOLE SDWK	
	USS2TAPSB	URD PRI 1 PH TAP HOLE SDWK	
	USS2TAPSZ	2 PH 3.5' PRI TAP HOLE SDWK	
	USS3TAPSB	URD PRI 3 PH TAP HOLE SDWK	
	USS3TAPSZ	3 PH 3.5' PRI TAP HOLE SDWK	

COMPATIBLE UNIT BREAKDOWN

QUANTITY	ITEM	STOCK #	DESCRIPTION
	DI	9718-8123	CAP. RBR. 200A. BUSH. LB
	EQ	9739-0555	H.V. CABLE TAG. PLASTIC
	MV	9711-3211	WIRE. CU. #2 SDTBC
	RS	9718-8121	LB ELBOW TERMINATOR. 200A
	RU	9717-2473	#2 TINNED CU CRIMPET
	SF	9721-0785	PLUG. PLASTIC. 4" DUCT
	SH	9713-0103	GROUND ROD. 5/8" X 8'
	SL	9725-2112	BOLT. BRZ. .5" X 2.5" TN
	SM	9725-2127	LOCKWASHER 1/2" BRONZE
	TZ	9700-0044	BLUE STONE LBS.
	UG	9700-0013	CONCRETE MIX. 4000 PSI. CU.FT.
	VF	9718-8019	4-WAY CABLE TAP MODULE
	VK	9717-2429	ELBOW CONNECTOR FOR #2 CABLE
	VM	9721-0617	3.5' X 3.5' PRECAST CONCRETE CASING
	VN	9721-0694	BILCO ROOF. SDWK
	WE	9721-0767	RING. CONC. 3.5' X 3.5'. 6" EXT.
	WQ	9712-0801	3PH FAULT INDICATOR. 200A. 3-N-1 LED
	WQ	9713-3009	1PH FAULT INDICATOR. 200A. DIFUSER LED
		DESIGNATION	DESCRIPTION
	UTAP3PHAMB	Z or U	3 PH TAP MODUL 15KV TS 32 ML URB
	UTAP2PHAMB	Z or U	2 PH TAP MODUL 15KV TS 31 ML URB
	UTAP1PHAMB	Z or U	1 PH TAP MODUL 15KV TS 30 ML URB
	MHER3535MB		MH EXT RING 3.5' X 3.5' X 6" ML URB
	MH3535MB OR Y		MH 3.5' X 3.5' PRI TAP D6-11 ML URB
	MHR3535SMB OR Y		3.5' X 3.5' ROOF W/ DOOR SW ML URB

4 WAY = U4TAP3PHAMU, U4TAP3PHAMZ

NOTES:

- WHEN WORK IS TO BE DONE BY UG, ENGINEERING ASSEMBLIES WILL BE DESIGNATED - USS1TAPSZ, USS2TAPSZ, USS3TAPSZ
- REV A: CHANGE DWG FORMAT AND CHANGED STOCK NO'S PER WMIS.

DRAWN: AVI | DVLPEP: AAT | DATE: 05-12-80 | REVIEWED: RDS | DATE: 5/9/2017 | APPRVD: BS | DATE: 5/9/2017 | NEXT REVIEW: 5/22 | REV: B



POWER DISTRIBUTION STANDARDS

URD PRIMARY CABLE TAP HOLE ENGINEERING ASSEMBLIES & COMPATIBLE UNITS BREAKDOWN