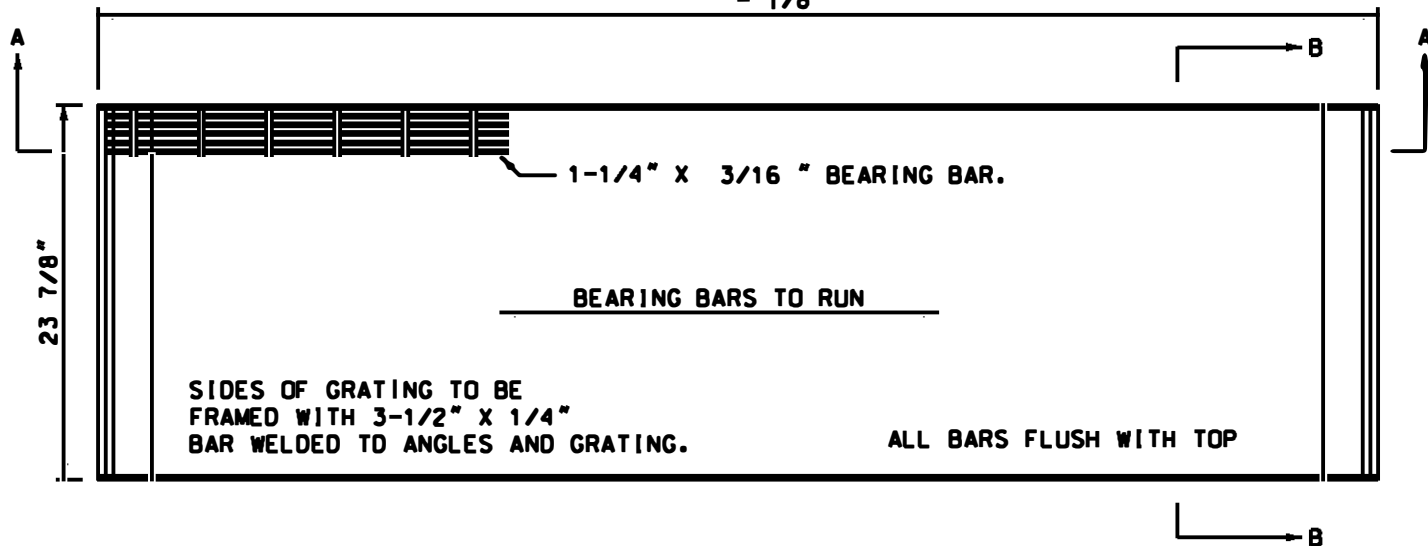
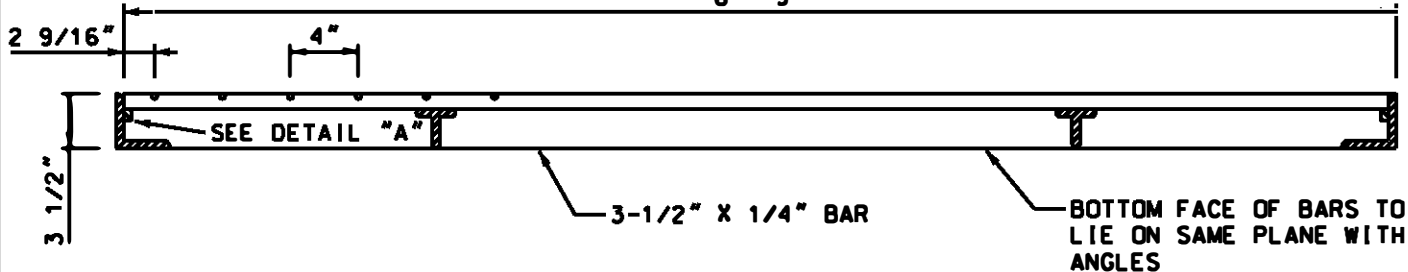


6'-10" + 0" / - 1/8"



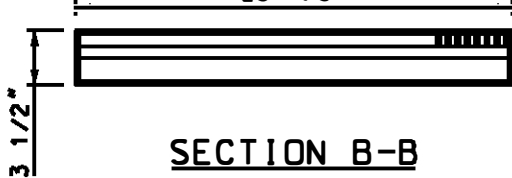
PLAN

6'-9"

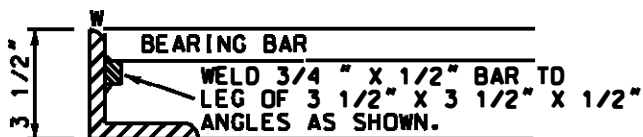


SECTION A-A

23 7/8"



SECTION B-B



DETAIL "A"

NOTES:

1. GRATING TO WITHSTAND AASHTO H-10 LOADING AS A MINIMUM. MANUFACTURER TO SPECIFY MAXIMUM DESIGN STRESS USED.
2. MANUFACTURER TO USE A-569 STEEL FOR BEARING BARS AND A-510 STEEL FOR CROSS BARS OR APPROVED EQUIVALENT.
3. GRATING TO BE ELECTRO-FORGED WELDED, PROVIDING COMPLETE METAL FUSION, OR APPROVED EQUIVALENT.
4. MAXIMUM CLEAR OPENING BETWEEN BEARING BARS IS TO BE 3/8\".
5. ALL MATERIAL TO BE GALVANIZED AFTER SHOP WORK AND SHALL CONFORM TO THE LATEST REVISION OF A.S.T.M. A-123.
6. STOCK NUMBER 9721-0682.
7. COMPATIBLE UNIT DESIGNATION MHRSG7X2SMY.
8. APPROXIMATE WEIGHT 250#.
9. REV A: CHANGED DWG FORMAT AND CHANGED STOCK NO'S PER WMIS.
10. BASE PLATE TO BE FLUSH WITH GRATING.

DRAWN: AVI | DVL PED: PML | DATE: 08-13-80 | REVIEWED: RDS | DATE: 10/05/15 | APPRVD: AAT | DATE: 10/05/15 | NEXT REVIEW: 10/19 | REV: A



POWER
DISTRIBUTION
STANDARDS

2'-0" X 6'-10" SLAB GRATING
FOR SIDEWALK MANHOLES