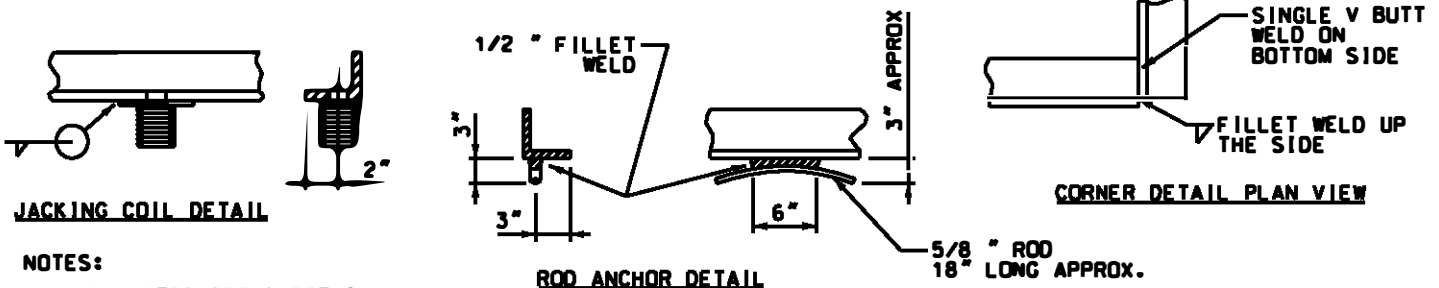


SCHEDULE OF DIMENSIONS

COMPATIBLE UNIT DESIGNATION	MANHOLE SIZE	STOCK NUMBER	FRAME LENGTH A	JACKING COIL INSERTS			5/8" # DEFORMED ROD ANCHOR			
				NO. REQ'D	B	C	NO. REQ'D	D	E	F
MHRF0606SMY	6' X 6'	9721-0201	7'-0"	4	1'-6"	-	-	2'-0"	-	-
MHRF0608SMY	6' X 8'	9721-0205	9'-0"	4	2'-0"	-	4	2'-6"	-	-
MHRF0608RMY	6' X 8'		9'-0"	4	2'-0"	-	4	2'-6"	-	-
MHRF0610SMY	6' X 10'	9721-0206	11'-0"	4	2'-6"	-	6	3'-6"	3'-2"	-
MHRF0610RMY	6' X 10'		11'-0"	4	2'-6"	-	6	3'-6"	3'-2"	-
MHRF0612SMY	6' X 12'	9721-0207	13'-0"	4	3'-0"	-	6	2'-6"	3'-8"	-
MHRF0612RMY	6' X 12'		13'-0"	4	3'-0"	-	6	2'-6"	3'-8"	-
MHRF0614SMY	6' X 14'	9721-0208	15'-0"	4	4'-0"	-	8	2'-0"	3'-6"	3'-6"
MHRF0614RMY	6' X 14'	9721-0220	15'-0"	4	4'-0"	-	8	2'-0"	3'-6"	3'-6"
MHRF0616SMY	6' X 16'	9721-0209	17'-0"	6	2'-0"	6'-6"	8	2'-6"	3'-8"	4'-0"
MHRF0616RMY	6' X 16'		17'-0"	6	2'-0"	6'-6"	8	2'-6"	3'-8"	4'-0"
MHRF0618SMY	6' X 18'	9721-0210	19'-0"	6	2'-0"	7'-6"	8	2'-6"	4'-6"	4'-4"
MHRF0618RMY	6' X 18'	9721-0202	19'-0"	6	2'-0"	7'-6"	8	2'-6"	4'-6"	4'-4"
MHRF0620SMY	6' X 20'	9721-0211	21'-0"	6	2'-0"	8'-6"	8	3'-6"	4'-6"	4'-4"
MHRF0620RMY	6' X 20'	9721-0203	21'-0"	6	2'-0"	8'-6"	8	3'-6"	4'-6"	4'-4"
MHRF0622SMY	6' X 22'	9721-0212	23'-0"	6	2'-0"	9'-6"	8	3'-6"	5'-6"	4'-4"
MHRF0622RMY	6' X 22'	9721-0204	23'-0"	6	2'-0"	9'-6"	8	3'-6"	5'-6"	4'-4"



NOTES:

1. FOR NOTES SEE SHEET 2
2. WELDING SPECIFICATION SEE SHEET(2)
3. REV A: CHANGED DWG FORMAT AND CHANGED STOCK NO'S PER WMIS.

DRAWN: LKO | DVLPEP: PML | DATE: 11-03-80 | REVIEWED:RDS | DATE:10/05/15 | APPRVD: AAT | DATE: 10/05/15 | NEXT REVIEW: 10/19 | REV: B



POWER DISTRIBUTION STANDARDS

FRAMES FOR FLUSH TYPE MANHOLE FOR SIDEWALK AND ROADWAY

FABRICATION NOTES

- 1: WELD ALL CORNERS AT 9D DEGREES. GRIND OFF ANY HIGH SPOTS ON THE INSIDE FLANGE SURFACES TO ALLOW PROPER SEATING OF GRATINGS AND SLAB FRAMES. THE FINISHED FRAME IS TO HAVE ALL 4 CORNERS ON THE SAME PLANE AND IS NOT TO BE TWISTED OR BEND.
- 2: THE FRAME IS TO BE GALVANIZED AFTER SHOP WORK AND SHALL CONFORM TO A.S.T.M. SPECIFICATION A-123 WITH LATEST REVISIONS THEREOF.
- 3: FRAMES 14' LONG AND LARGER SHALL HAVE A 3"x3"x82.5" STEEL CHANNEL BRACE (STOCK NUMBER 9721-0135) BOLTED ACROSS THE CENTER OF THE FRAME TO PREVENT THE FRAME FROM BENDING DURING TRANSPORTATION. USE THE JACKING COILS AS THE BOLT HOLES FOR THE SUPPORT.

CONDUIT NOTES

- 4: MANHOLES WIDER THAN 6'-0" MUST BE COLLARED DOWN AT THE RIM TO PROVIDE A MAXIMUM SPAN OF 6'-0" IN ORDER TO UTILIZE THE 6'-10" REMOVABLE SLABS AND GRATINGS.
- 5: REFER TO ENGINEERING ASSEMBLY DRAWINGS (SECTION 8) FOR STANDARDS ARRANGEMENTS AND COVERS, FRAMES AND GRATINGS.
- 6: THE ENGINEER MAY SPECIFY A NON-STANDARD ARRANGEMENT OF THE SLABS AND GRATINGS BY SPECIFYING THEIR COMPATIBLE UNITS. IN THIS CASE THE ENGINEER MUST SHOW THE RECOMMENDED POSITIONING OF THE SLABS AND GRATINGS IN A SUB-SKETCH OF THE ROOF PLAN ON THE JOB DRAWING.
- 7: REV A: CHANGED DWG FORMAT AND CHANGED STOCK NO'S PER WMIS.

WELDING SPECIFICATIONS

- 1: ALL STRUCTURAL STEEL SHALL CONFORM TO ASTM A36.
- 2: ALL STEEL IS TO BE WELDED IN ACCORDANCE WITH AWS 01.1 USING EITHER THE SMAW PROCESS (AWS SPEC. A5.1) OR THE FCAW PROCESS (AWS SPEC. A5.20 OR A5.29).
- 3: ALL WELDING IS TO BE PERFORMED ACCORDING TO WELDING PROCEDURE SPECIFICATIONS PFAB200601, PFAB200602 AND PFAB200603.
- 4: ALL WELDERS ARE TO BE QUALIFIED ACCORDING TO AWS D1.1.
- 5: ALL WELDER CERTIFICATION RECORDS ARE TO BE DOCUMENTED, MAINTAINED AND AVAILABLE FOR INSPECTION/VERIFICATION.

DRAWN: LKD | DVLPEO: PML | DATE: 11-03-80 | REVIEWED: RDS | DATE: 10/05/15 | APPRVD: AAT | DATE: 10/5/15 | NEXT REVIEW: 10/19 | REV: B



POWER
DISTRIBUTION
STANDARDS

FRAME NOTES FOR
FLUSH TYPE MH ROOFS