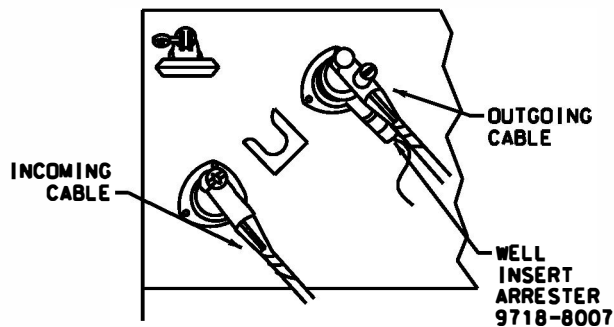


DETAIL A
OPEN POINT INSTALLATION WITH
PARKING STAND ARRESTER



DETAIL B
LOOP SYSTEM INSTALLATION WITH
WELL INSERT ARRESTER

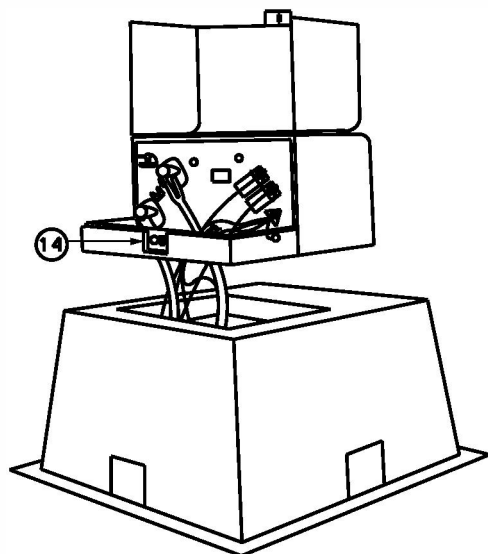


FIGURE 1

NOTES

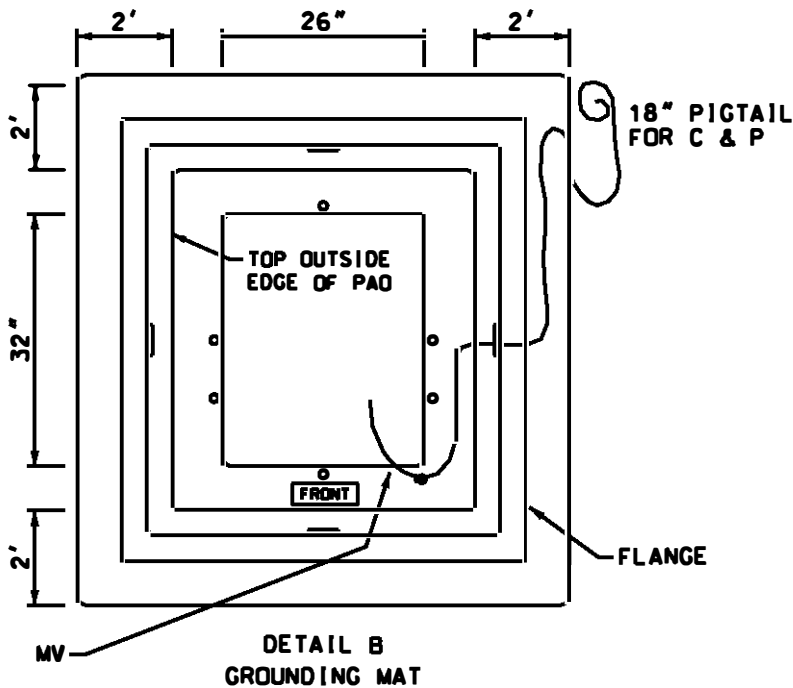
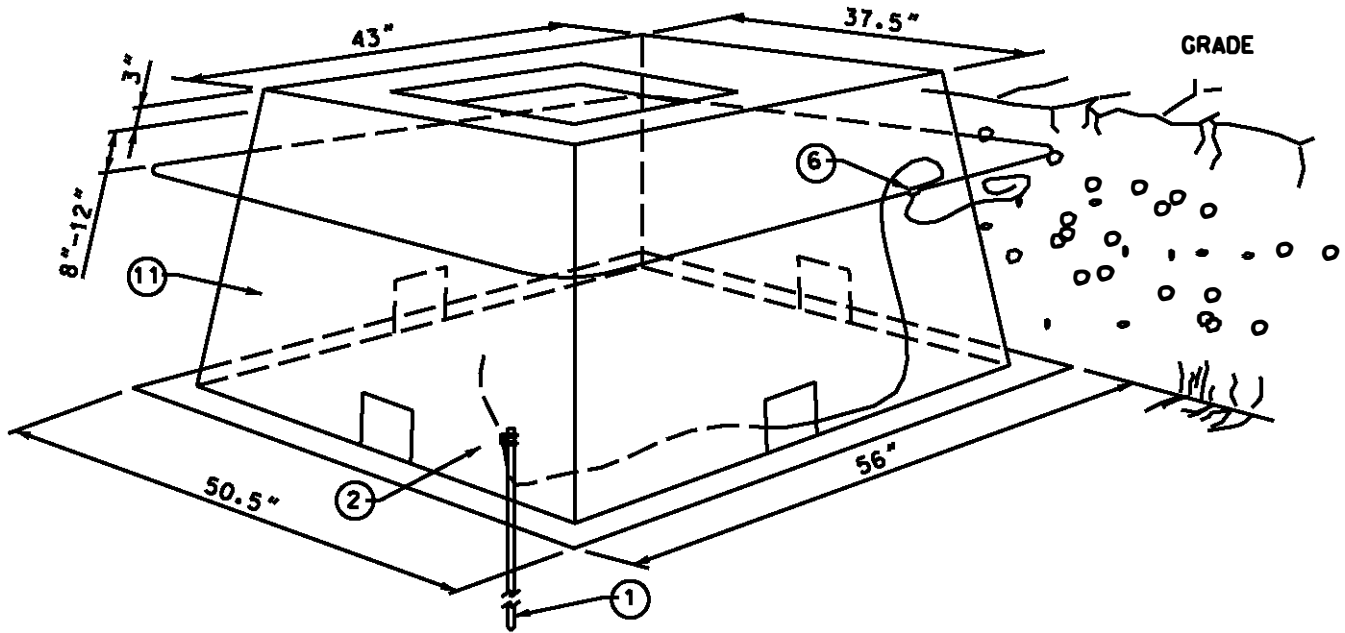
1. LEAVE 10 FT. PRIMARY CABLE SLACK PER LEG AND COIL IT IN BOTTOM OF BOXPAD.
2. WHEN GROUNDING PRIMARY CABLE AS SHOWN IN FIG. 1. LEAVE SUFFICIENT SLACK (4 FT MIN.) OF CONCENTRIC NEUTRAL TO PERMIT OPERATION OF ELBOW TERMINATORS.
3. INSTALL FAULT INDICATOR (WQ) ON OUTGOING CABLE ELBOW.
4. INSTALLATION OF ARRESTERS
 - a. AT THE OPEN POINT OF A LOOP, INSTALL (2) ELBOW ARRESTERS (9718-8005) AND (1) DOUBLE FEEDTHROUGH PARKING BUSHING (9718-8124) AS SHOWN IN DETAIL 'A'.
 - b. IN THE CASE OF A RADIAL TAP FROM AN OVERHEAD FEEDER, INSTALL (1) ELBOW ARRESTER ON H1B BUSHING AT THE LAST TRANSFORMER.
 - c. AT THE TRANSFORMER ADJACENT TO THE OPEN POINT OF A LOOP, INSTALL (1) WELL INSERT ARRESTER (9718-8007) AS SHOWN IN DETAIL B. THE WELL INSERT ARRESTER IS TO BE INSTALLED WITH A TORQUE TOOL (9714-2090).
 - d. CONNECT ARRESTER'S FLEXIBLE GROUND LEAD TO GROUND BUS WITH "HOTLINE" CLAMP (9713-1547).
5. INSTALL SECONDARY COVERS (ITEM YK) ON SECONDARY BUSHINGS X1 AND X3 TO INSURE DEAD FRONT REQUIREMENTS.
6. THE TANK GROUND TO X2 CONNECTION SHALL BE PROVIDED BY PERCO WITH #2 COPPER WIRE (ITEM MV).

DRAWN: AVI | DVL PED: AWA | DATE: 09-06-07 | REVIEWED: RDS | DATE: 05/05/16 | APPRVD: AAT | DATE: 05/05/16 | NEXT REVIEW: 05/20 | REV: C



DISTRIBUTION
STANDARDS

SINGLE PHASE LOW PROFILE PADMOUNT
TRANSFORMER INSTALLATION



NOTES

1. THE FRONT EDGE OF THE BOXPAD (LABELED FRONT) AND CONSEQUENTLY THE FRONT OF THE TRANSFORMER SHOULD BE ORIENTED IN SUCH A WAY AS TO PROVIDE A MINIMUM OF 10 FT OF RELATIVELY FLAT HORIZONTAL GROUND IN FRONT FOR OPERATING PURPOSES.
2. THE BOXPAD SHOULD BE LEVELED BEFORE THE TRANSFORMER IS INSTALLED.
3. INSTALL #2 BARE COPPER GROUND WIRE (ITEM MV) WITHOUT BREAKING CONTINUITY AS SHOWN ON GROUNDING DETAIL B. LEAVE 3 FT MIN. OF GROUND WIRE SLACK WITHIN BOXPAD TO BE CONNECTED TO THE PRIMARY NEUTRAL.
4. INSTALL GROUND ROD (ITEM ES) AND GROUND ROD CLAMP (ITEM ET) A MAXIMUM OF 6" ABOVE THE BOTTOM FLANGE OF THE BOXPAD.
5. ACCESSORIES TO THE BOXPAD INCLUDE THE BOXPAD 4" SPACER (9718-8036), THE 10" SPACER (9718-8037), AND THE BOXPAD COVER (9718-8038).

DRAWN: AVI | DVLPED: AWA | DATE: 09-06-07 | REVIEWED: RDS | DATE: 05/05/16 | APPRVD: AAT | DATE: 05/05/16 | NEXT REVIEW: 05/20 | REV: C



DISTRIBUTION
STANDARDS

SINGLE PHASE LOW PROFILE PADMOUNT
TRANSFORMER INSTALLATION

C.U. MACRO - 1PH PADMOUNT TRANSFORMER INSTALLATION		
QTY	COMPATIBLE UNIT	DESCRIPTION
1	PMBPMB	PADMT TRNS BX PD D19 ML URB
1	PMTINSTMB	PDMT TRNSF 1PH CON TS35 ML URB
1	FCI46LED1P	INDICATOR, FAULT, 100AMP, 1PH
EA DESIGNATION		DESCRIPTION
PMT1PH*		PDMT TRNSF 1PH ASSEMBLY URB

COMPATIBLE UNIT BREAKDOWN - 1PH PADMOUNT INSTALLATION				
QUANTITY	ITEM	STOCK NO.	DESCRIPTION	
1		1	9713-0112	ROD, CW, 5/8" X 8', GRD
1	1	2	9713-0113	CLAMP, BRZ, 5/8", GRD
	1	3	9739-0679	TAG, PL, HV CABLE
30		4	9711-3211	WIRE, CU, #2, SD
	1	5	9718-8121	ELBOW, RBR, 200A, LB
1	1	6	9717-2473	CRIMPIT, CU, # 2
	1	7	9717-2113	HYLUG, CU, #2, 1-HOLE
	2	8	9717-2429	CONN, CU, #2, ELBOW
	1	9	9718-8102	ELBOW, RBR, W/T.P., LB
		10		FAULT IND F/T.P.ELBW
1		11	9718-8035	BOX PAD, FBRGL, 1PH
	3	12	9717-2490	SPADE, CU, 4H, F/1" STUD
	2	13	9718-8173	COVR, PL, 4H SEC, SPADE
	1	14	9739-0164	PADLOCK, BR, 7/8" SHKL
2		15	9725-0260	BOLT, KIT, PADMOUNT, RETENTION
2		16	5116-1826	PLATE, PADMOUNT XFMR RETENTION
CU DESIGNATION		DESCRIPTION		
PMTINSTMB*		PDMT TRNSF 1PH CON TS35 ML URB		
PMBPMB*		PADMT TRNS BX PD D19 ML URB		

COMPATIBLE UNIT BREAKDOWN - 1PH LOW PROFILE PADMOUNT TRANSFORMERS						
QUANTITY			STOCK NO.	DESCRIPTION		
1			9747-0715	76120/240	PM100250	
	1		9747-0716	76120/240	PM100500	
		1	9747-0718	76120/240	PM100750	
			9747-0767	76120/240	PM101000	
		1	9747-0709	76120/240	PM101670	
			9747-0761	DV120/240	PM100250	
		1	9747-0763	DV120/240	PM100500	
			9747-0714	DV120/240	PM100750	
		1	9747-0717	DV120/240	PM101000	
CU DESIGNATION			DESCRIPTION			
100PMGBXB*			100KVA DV 250/125V 1PH PM URB			
75PMGBXB*			75KVA DV 250/125V 1PH PM URB			
50PMGBXB*			50KVA DV 250/125V 1PH PM URB			
25PMGBXB*			25KVA DV 250/125V 1PH PM URB			
167PMBXB*			167KVA TR 250/125V 1PH PM URB			
100PMBXB*			100KVA TR 250/125V 1PH PM URB			
75PMBXB*			75KVA TR 250/125V 1PH PM URB			
50PMBXB*			50KVA TR 250/125V 1PH PM URB			
25PMBXB*			25KVA TR 250/125V 1PH PM URB			

NOTES:

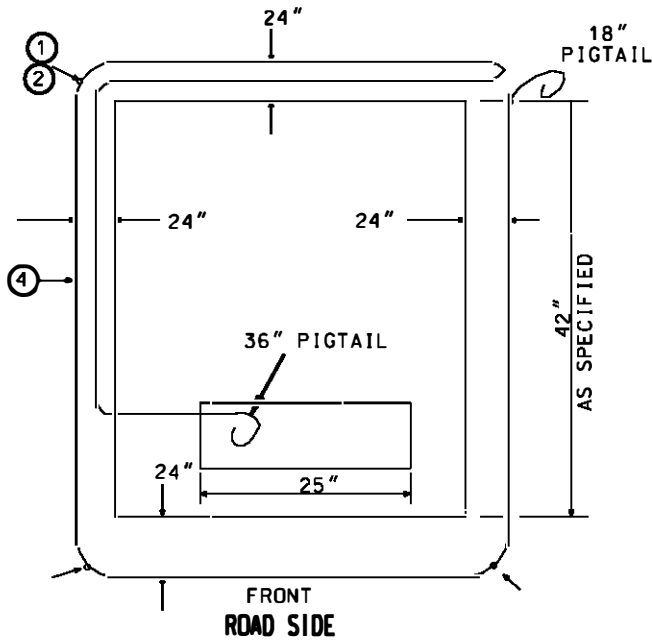
- *WHEN WORK IS TO BE DONE BY OTHER THAN URB, THE DESIGNER IS TO SELECT THE APPROPRIATE COMPATIBLE UNITS FOR THE AREA TO DO THE JOB.

DRAWN: AVI | DVLPED: AWA | DATE: 09-06-07 | REVIEWED:RDS | DATE: 05/05/16 | APPRVD: AAT | DATE: 05/05/16 | NEXT REVIEW: 05/20 | REV: C



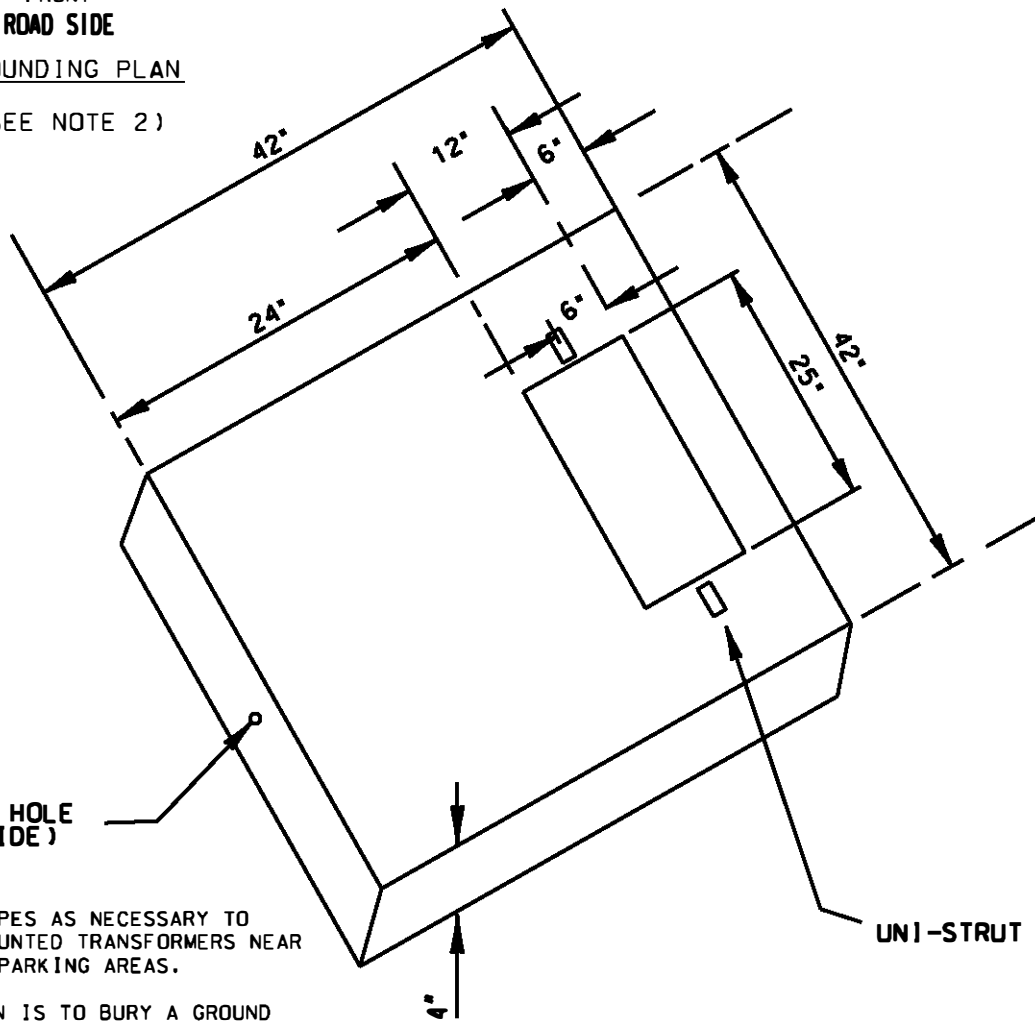
DISTRIBUTION STANDARDS

SINGLE PHASE LOW PROFILE PADMOUNT TRANSFORMER INSTALLATION



GROUNDING PLAN

(SEE NOTE 2)



LIFTING HOLE (EACH SIDE)

NOTES:

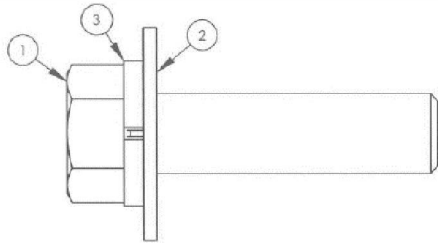
1. USE BUMPER PIPES AS NECESSARY TO PROTECT PADMOUNTED TRANSFORMERS NEAR DRIVEWAY AND PARKING AREAS.
2. GROUNDING PLAN IS TO BURY A GROUND WIRE 24" OFF THE PAD ALL AROUND 10" IN DEPTH.
3. SEE DWG 4-7-0887 FOR SUBSURFACE TRANSFORMER INSTALLATION.

DRAWN: AVI | DVLPED: TWM | DATE: 3/8/07 | REVIEWED: RDS | DATE: 05/05/16 | APPRVD: AAT | DATE: 05/05/16 | NEXT REVIEW: 05/20 | REV: C



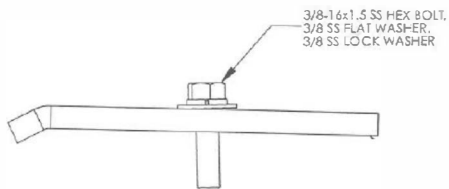
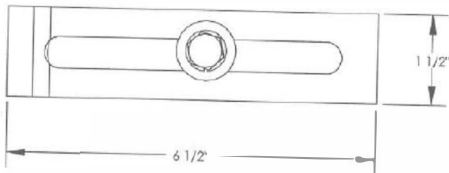
DISTRIBUTION STANDARDS

MOUNTING PADS FOR CONVERTING OF SUBSURFACE TRANSFORMER TO SINGLE PHASE PADMOUNT TRANSFORMER



9725-0260 BOLT KIT:

1. 3/8-16X1.5" SS BOLT.
2. 3/8" OVERSIZED SS FLAT WASHER.
3. 3/8" LOCK WASHER.

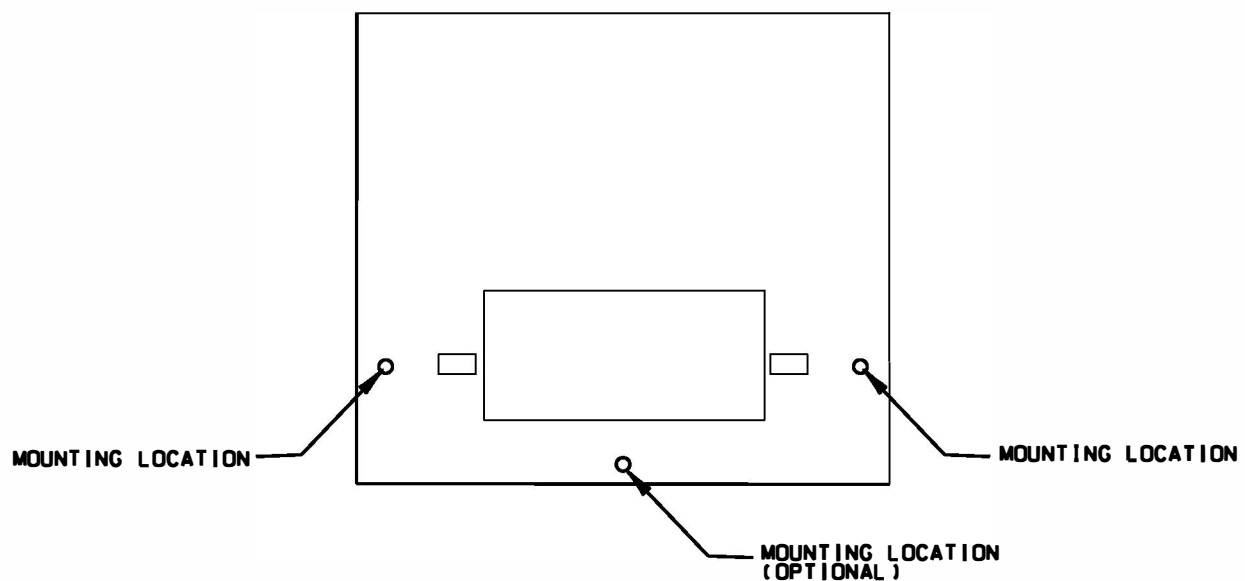


5116-1826 RETENTION BRACKET:

CURVED PART OF BRACKET INSTALLS TOWARD THE TRANSFORMER BASE. USE EXISTING THREADED INSERTS IN FIBERGLASS BOXPAD. ADJUST BRACKET AS NEEDED AND TORQUE TO 15 FT/LBS.

PADMOUNT TRANSFORMER RETENTION BRACKETS:

1. TWO SETS OF BRACKETS HAVE BEEN PROVIDED UNDER THE PEPCO CU PMBPMB. STOCK NUMBER 5116-1826 IS THE TRANSFORMER RETENTION BRACKET AND STOCK NUMBER 9725-0260 IS THE SPECIAL STAINLESS STEEL BOLT SET. PADS HAVE THREE MOUNTING LOCATIONS FOR THE BRACKETS BUT ONLY TWO ARE REQUIRED.
2. MOUNTING BRACKETS ARE REQUIRED TO PREVENT THE TRANSFORMER FROM MOVING OFF THE PAD DUE TO IMPACT OR VIBRATIONS.
3. 3/8's BOLT KIT CONSISTS OF SPECIAL HIGH STRENGTH HARDWARE. BRASS 3/8's BOLTS IN TRUCK STOCK WILL BREAK ON IMPACT FROM VEHICLE OR MOWING MACHINE.



FRONT OF 9718-8035 XFMR BOXPAD.

DRAWN: RDS | DVLPED: RDS | DATE: 05/05/16 | REVIEWED: RDS | DATE: 05/05/16 | APPRVD: AAT | DATE: 05/05/16 | NEXT REVIEW: 05/20 | REV: A



**DISTRIBUTION
STANDARDS**

**PADMOUNT TRANSFORMER
RETENTION**