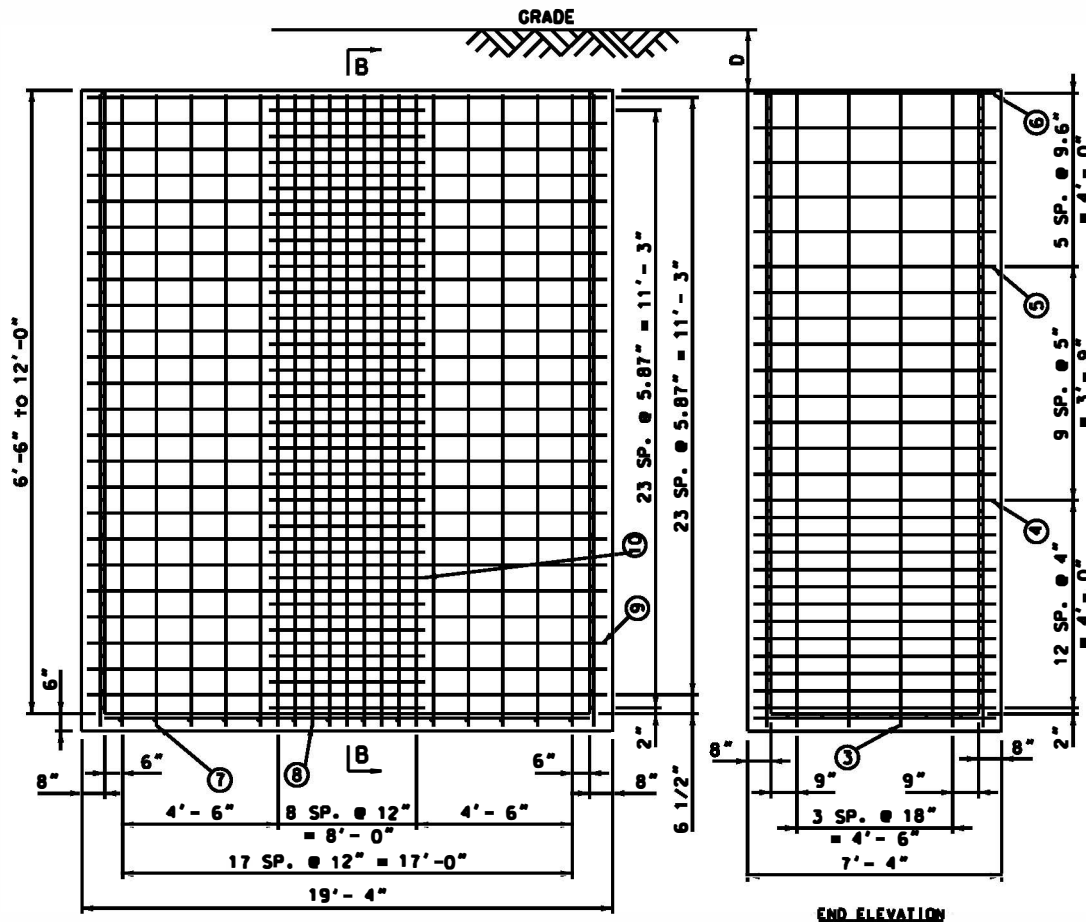
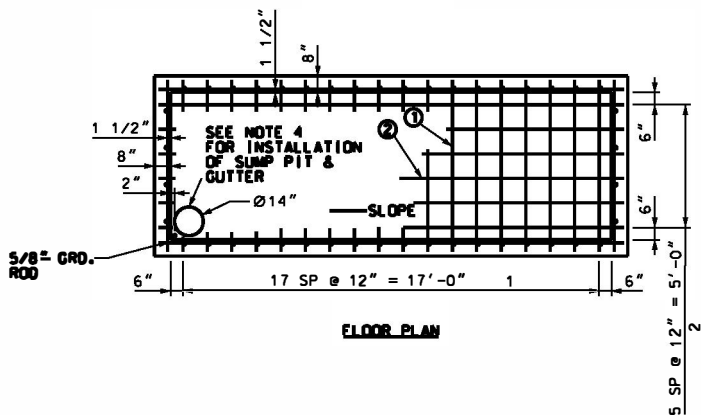


6' - 0" X 18' - 0" MANHOLE (CAST IN PLACE)



SIDE ELEVATION

END ELEVATION



FLOOR PLAN

NOTES:

1. D =
FLUSH SOWY. 6" MIN.
FLUSH ROWK. 9" MIN.
RECESSED SOWY. 18" MIN.
RECESSED ROWK. 21" MIN.
2. SP = SPACES.
3. NUMBER IN CIRCLE INDICATES RODS IN STEEL SCHEDULE.
4. INSTALL SUMP PUMP PIT AND GROUND ROD ON LOW VOLTAGE END OF MANHOLE PER DRAWINGS 1060 (UG-4350) AND 1096 (UG-4355) FOR TRANSFORMER MANHOLES.
5. REFER TO SECTION 6. MANHOLE CONSTRUCTION AND SPECIFICATIONS OF THE CONDUIT CONSTRUCTION MANUAL FOR FURTHER INFORMATION ON MANHOLE CONSTRUCTION.
6. WHEN INSTALLING MANHOLES END TO END OR SIDE BY SIDE A MINIMUM OF 1" IS REQUIRED INSIDE WALL TO INSIDE WALL OF ABUTTING MANHOLES. 1" IS THE THICKNESS FOR A COMMON WALL.
7. FORMERLY DRAWING NO. 1169.

REV: B	DESCRIPTION: MANHOLE CONSTRUCTION DRAWING	ACE: <input type="checkbox"/>	DPL: <input type="checkbox"/>	PEPCO: <input checked="" type="checkbox"/>
DEVELOPED: FLM	DATE: 04/15/88	REVIEWED: RLH	DATE: 06/10/19	APPROVED: RJS
		DATE: 06/10/19		

6' - 0" X 18' - 0" MANHOLE (CAST IN PLACE)

FLOOR REINFORCING SCHEDULE

FLOOR (6" THICK)		
ITEM NO.	1	2
QUANTITY	18	6
ROD SIZE	#3	#3
C/C	12"	12"
LENGTH	7'-0"	19'-0"

CONCRETE SCHEDULE

FLOOR 71 FT³
WALLS 34 FT³

**MANHOLE WALLS REINFORCING SCHEDULE
(ALL WALLS ARE 8" THICK)**

DEPTH	6' - 6" DC							
ITEM NO.	3	4	5	6	7	8	9	10
QUANTITY	8	10	4	-	36	18	18	-
ROD SIZE	#4	#5	#5	-	#6	#4	#6	-
C/C	18"	12"	9"	-	12"	12"	9"	-
LENGTH	6'-9"	7'-0"	7'-0"	-	6'-9"	6'-9"	19'-0"	-

DEPTH	8' - 0" DC							
ITEM NO.	3	4	5	6	7	8	9	10
QUANTITY	8	10	8	-	36	18	22	-
ROD SIZE	#4	#5	#5	-	#6	#4	#6	-
C/C	18"	12"	9"	-	12"	12"	9"	-
LENGTH	8'-3"	7'-0"	7'-0"	-	8'-3"	8'-3"	19'-0"	-

DEPTH	9' - 0" DC							
ITEM NO.	3	4	5	6	7	8	9	10
QUANTITY	8	10	12	-	36	18	24	-
ROD SIZE	#4	#5	#5	-	#6	#4	#6	-
C/C	18"	12"	9"	-	12"	12"	9"	-
LENGTH	9'-3"	7'-0"	7'-0"	-	9'-3"	9'-3"	19'-0"	-

DEPTH	10' - 0" DC							
ITEM NO.	3	4	5	6	7	8	9	10
QUANTITY	8	10	14	-	36	18	26	-
ROD SIZE	#4	#5	#5	-	#6	#4	#6	-
C/C	18"	12"	9"	-	12"	12"	9"	-
LENGTH	10'-3"	7'-0"	7'-0"	-	10'-3"	10'-3"	19'-0"	-

DEPTH	11' - 0" DC							
ITEM NO.	3	4	5	6	7	8	9	10
QUANTITY	8	10	16	-	36	18	30	28
ROD SIZE	#4	#5	#5	-	#6	#4	#6	#4
C/C	18"	12"	9"	-	12"	12"	9"	9"
LENGTH	11'-3"	7'-0"	7'-0"	-	11'-3"	11'-3"	19'-0"	8'-3"

(CONTINUE ON SHT. 3 OF 6)

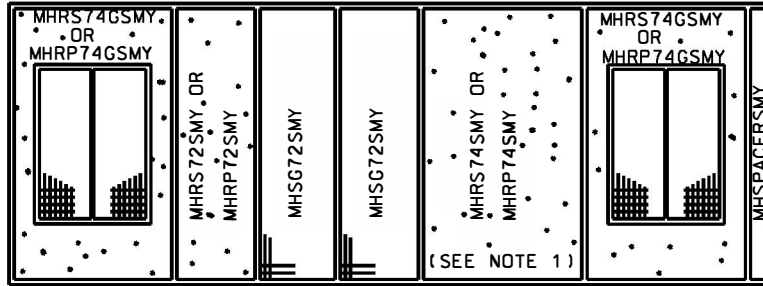
6'-0" X 18'-0" MANHOLE
(CAST IN PLACE)

MANHOLE WALLS REINFORCING SCHEDULE (CONTINUE)
(ALL WALLS ARE 8" THICK)

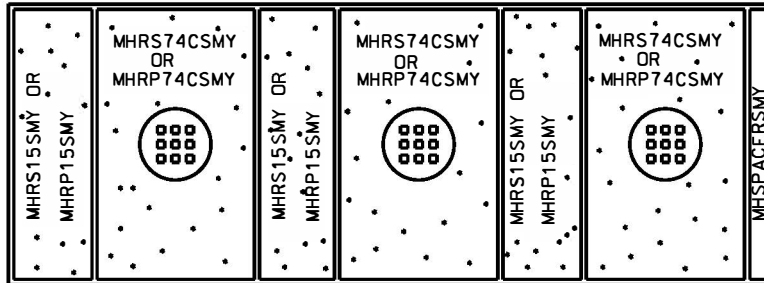
DEPTH	12' - 0" DC							
ITEM NO.	3	4	5	6	7	8	9	10
QUANTITY	8	10	20	-	36	18	32	30
ROD SIZE	#4	#5	#5	-	#6	#4	#6	#4
C/C	18"	12"	9"	-	12"	12"	9"	9"
LENGTH	12'-3"	7'-0"	7'-0"	-	12'-3"	12'-3"	19'-0"	8'-3"

6' - 0" X 18' - 0" MANHOLE MANHOLE ROOF LAYOUTS

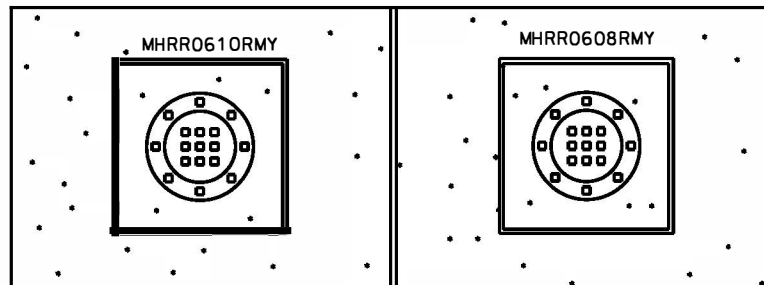
MH0618VS
OR
MH0618VPS
(SEE NOTE 3)



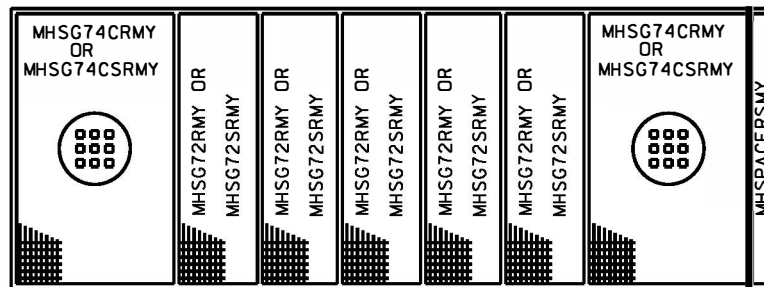
MH0618SFS
OR
MH0618SFPS
(SEE NOTE 3)



MH0618RR

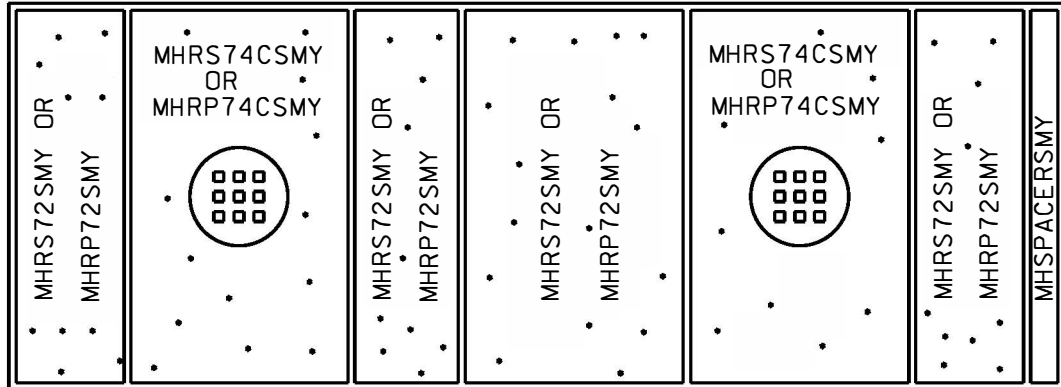


MH0618VR
OR
MH0618VRS
(SEE NOTE 2)

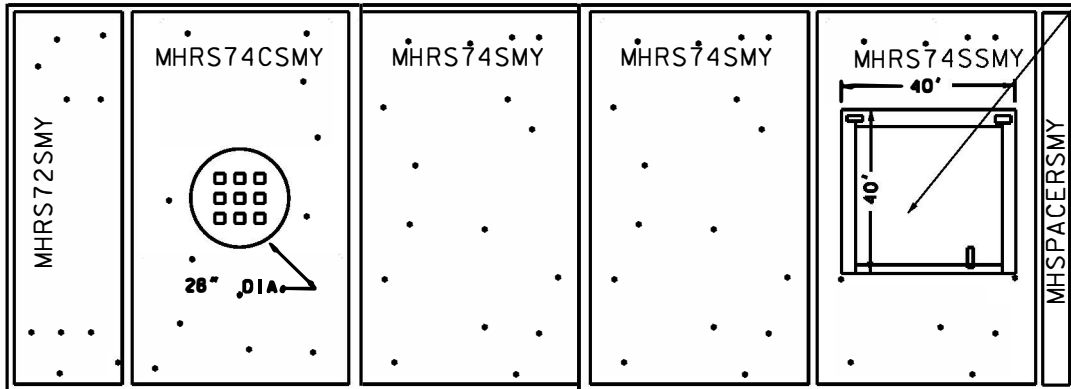


6'-0" X 18'-0" MANHOLE MANHOLE ROOF LAYOUTS

MH0618S
OR
MH0618PS
(SEE NOTE 3)



MH06184SFS
(SEE NOTE 6)



NOTES:

1. WHEN INSTALLING A 1500 KVA OR LARGER TRANSFORMER, REPLACE MHRP74SMY (OR MHRP74SMY) WITH 2-MHSG72SMY (FOR INCREASED VENTILATION).
2. ENGINEERING ASSEMBLY MH0618VRS SHALL BE CALLED FOR WHEN A ROADWAY MANHOLE IS TO BE LOCATED IN A SIDEWALK. COMPATIBLE UNITS MHSG74CRMY AND HSG72RMY ARE REPLACED BY SG74CSMY AND MHSG72SRMY FOR ENGINEERING ASSEMBLY MH0618VRS.
3. WHEN ENGINEERING ASSEMBLIES MH0618VPS, MH0618PS, OR MH0618SFPS ARE REQUIRED, THE SIDEWALK SLABS ARE REPLACED WITH THE PAVER PANS OF THE CORRESPONDING CONSTRUCTION.
4. IN PARKING LOTS, DO NOT INSTALL VENTED MANHOLES IN A HANDICAP DESIGNATED SPACE.
5. ROADWAY MANHOLES SHOULD BE INSTALLED WITH THE LONG WALL PARALLEL TO TO THE CURB.
6. THIS SPECIFIC ROOF LAYOUT DESIGN IS TO BE USED FOR THE SUBMERSIBLE 4-WAY SWITCH.

6' - 0" X 18' - 0" MANHOLE ENGINEERING ASSEMBLIES BREAKDOWN

ENGINEERING ASSEMBLY BREAKDOWN FOR 6' - 0" X 18' - 0" MANHOLES

QUANTITY									DESIGNATION	DESCRIPTION	REF. DWG.	STOCK NO.	CAT ID
2	2	3		2	2	2	1	3	MHC28MY	MH COVER 28" ML CO	0431	9721-0637	0001655721
								2	MHDACMY	MH DOUBLE ACTING COVER ML CO	0434	9721-0640	0001655724
								2	MHDAFRMY	MH DA COV FRAME 40" RDWY ML CO	0427	9721-0611	0001655705
				1			1		MHRF0618RMY	MH RF FR 6X18 RDWY ML CO	1164	9721-0202	0001655648
1	1	1	1				1	1	MHRF0618SMY	MH RF FRAME 6X18 SDWK ML CO	1184	9721-0210	0001655656
								1	MHRR0608RMY	MH RF RECESSED ROOF 6X8 RDWY ML CO	1143	9721-0565	0001655692
								1	MHRR0610RMY	MH RF RECESSED ROOF 6X10 RDWY ML CO	0722	9721-0566	0001655693
								4	MHRS715SMY	MH RF SLAB 7X1.5 SDWK ML CO	1176	9721-0646	0001655728
	3							1	MHRS72SMY	MH RF SLAB 7X2 SDWK ML CO	UG-6393	9721-0648	0001655730
	1							2	MHRS74SMY	MH RF SLAB 7X4 SAC SDWK ML CO	UG-6400	9721-0661	0001655738
								2	MHRS74GSMY	MH RF SLAB 7X4 DR GRT SDWK ML CO	UG-6400	9721-0663	0001655740
		2					1	3	MHRS74CSMY	MH RF SLAB 7X4 SAC SDWK ML CO	UG-6400	9721-0662	0001655739
								1	MHRS74SSMY	MH RF SLAB DOOR 7X4 SDWK ML CO	UG-6400	9721-0574	0001655694
			4						MHRP715SMY	MH RF SLAB PAN 7X1.5 SDWK ML CO	1176	9721-0213	0001655659
3				1					MHRP72SMY	MH RF SLAB PAN 7X2 SDWK ML CO	UG-6393	9721-0214	0001655660
1				1					MHRP74SMY	MH RF SLAB PAN 7X4 SDWK ML CO	UG-6400	9721-0222	0001655666
									MHRP74CSMY	MH RF SLAB PAN 7X4 SAC SDWK ML CO	UG-6400	9721-0223	0001655667
2		3							MHRP74GSMY	MH RF SLAB PAN 7X4 DRGRT SDWK ML CO	UG-6400	9721-0221	0001655665
				2					MHSG72SMY	MH RF SLAB GRATE 7X2 SDWK ML CO	1183	9721-0682	0001655755
								5	MHSG72RMY	MH SLAB GRT 7X2 RDWK ML CO	1163	9721-0620	0001655708
								5	MHSG72SRMY	MH SLAB GRT 7X2 SP RDWK ML CO	1163	9721-0238	0001655667
								2	MHSG74CRMV	MH SLAB GRT 7X4 SAC RDWK ML CO	1351	9721-0658	0001655735
								2	MHSG74CSRMY	MH SLAB GRT 7X4 SAC SP RDWK ML CO	1351	9721-0659	0001655736
1	1	1	1				1	1	MHSPACERSMY	MH SPACER FOR SDWY MH ML CO	1386	9721-0669	0001655745
									MHSPACERRMY	MH SPACER FOR RDWY MH ML CO	1386	9721-0668	0001655744
1	1						1		MH0618MY	MH 6X18X6.5 DC ML CO	UG-4460	-	-
									MH0618VMY	MH 6X18X10 DC ML CO	UG-4460	-	-
DESCRIPTION													
									MH0618VS	MH 6X18 VENT SDWK TYPE			
									MH0618SFS	MH 6X18 SWITCH/FUSE SDWK TYPE			
									MH06184SFS	MH 6X18 4-WAY SWITCH/FUSE SDWK TYPE			
									MH0618VR	MH 6X18 VENT RDWY TYPE			
									MH0618RR	MH 6X18 RECESSED RDWY TYPE			
									MH0618VRS	MH 6X18 VENT RDWY FOR SDWK TYPE			
									MH0618VPS	MH 6X18 VENT PAVERS SDWK TYPE			
									MH0618SFPS	MH 6X18 SWITCH/FUSE PAVERS SDWK TYPE			
									MH0618S	MH 6X18 SDWK TYPE			
									MH0618PS	MH 6X18 PAVERS SDWK TYPE			