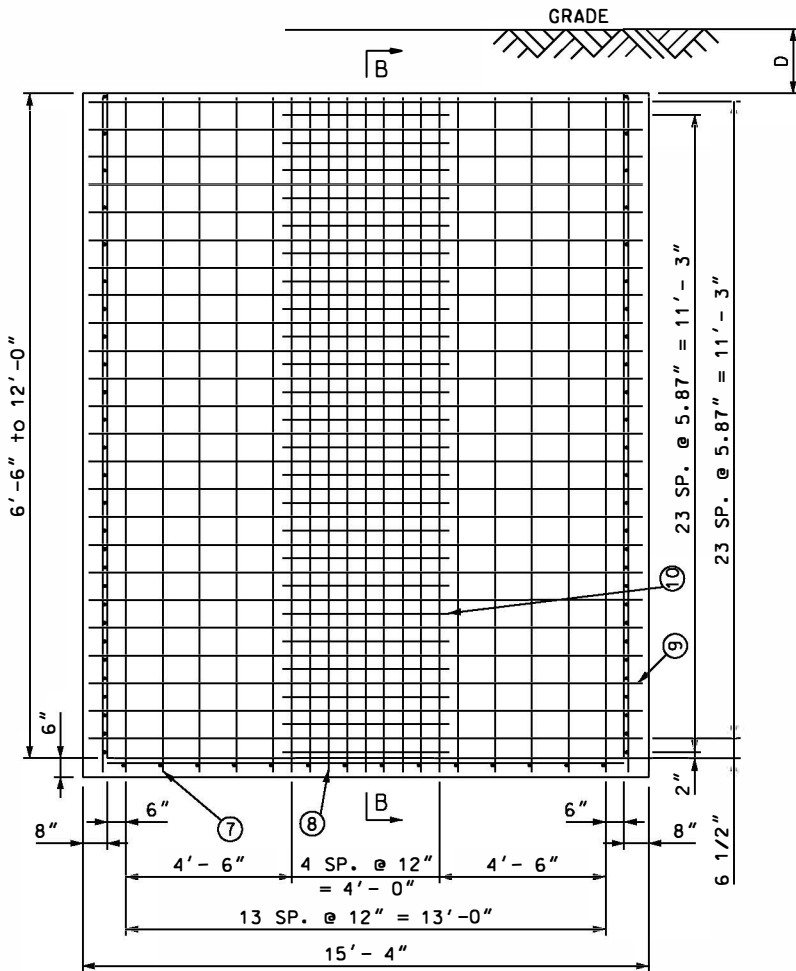
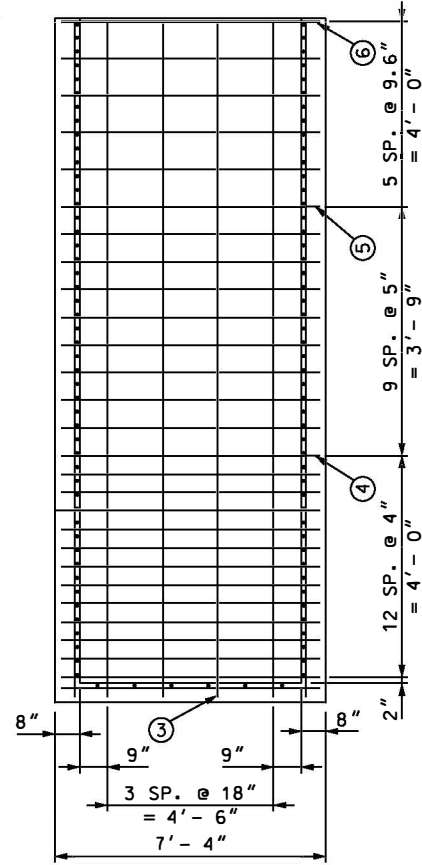


6' - 0" X 14' - 0" MANHOLE (CAST IN PLACE)

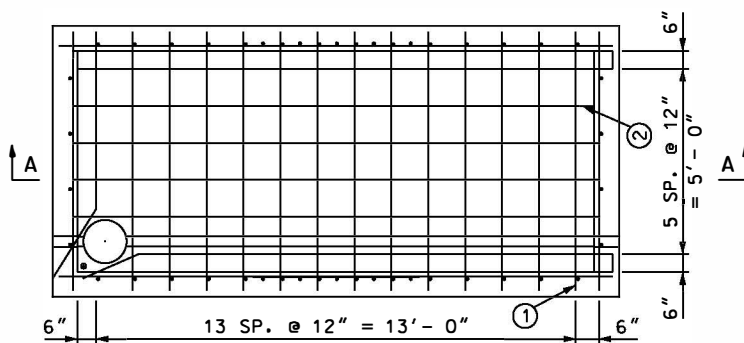
SEE NOTE 1



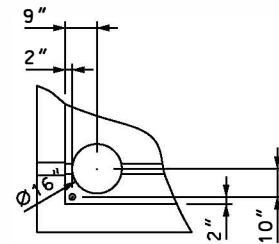
SECTION A - A



SECTION B - B



SECTION C - C



SEE NOTE 3

NOTES:

1. THE DISTANCE OF THE SHEETING TO INNER WALL OF MANHOLE IS 1 1/2" ALL AROUND.
2. FORMERLY DRAWING NO. 0333.

REV: B	DESCRIPTION: MANHOLE CONSTRUCTION DRAWING	ACE: <input type="checkbox"/>	DPL: <input type="checkbox"/>	PEPCO: <input checked="" type="checkbox"/>
DEVELOPED: PWL	DATE: 11/12/79	REVIEWED: RLH	DATE: 05/28/19	APPROVED: RJS
		DATE: 05/28/19		

NOTES FOR
6' - 0" X 14' - 0" MANHOLE

1. D=
FLUSH SIDEWALK = 6" MINIMUM
FLUSH ROADWAY = 9" MINIMUM
RECESSED SIDEWALK = 18" MINIMUM
RECESSED ROADWAY = 21" MINIMUM
2. SP. = SPACES
NUMBERS IN CIRCLE INDICATE RODS IN STEEL SCHEDULE.
3. INSTALL SUMP PIT AND GROUND ROD ON LOW VOLTAGE END OF MANHOLE
PER DRAWINGS 1060 (UG-4350) AND 1096 (UG-4355) FOR TRANSFORMER MANHOLES.
4. WHEN INSTALLING MANHOLES END TO END OR SIDE BY SIDE A MINIMUM
OF 1' IS REQUIRED INSIDE WALL TO INSIDE WALL OF THE ABUTTING
MANHOLES. 1' IS THE THICKNESS FOR A COMMON WALL.

REINFORCEMENT FOR
6' X 14' MANHOLE

FLOOR REINFORCING SCHEDULE		
ROD NO.	1	2
QUANTITY	14	6
SIZE	#3	#3
C/C	12"	12"
LENGTH	7'	14'

CONCRETE SCHEDULE	
FLOOR:	56 CU. FT.
WALLS:	28 CU. FT.

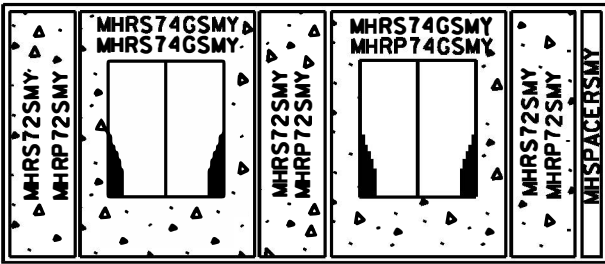
MANHOLE WALLS REINFORCING SCHEDULE (ALL WALLS ARE 8" THICK)								
ROD NO.	3	4	5	6	7	8	9	10
DEPTH	6' - 6" DC							
QUANTITY	8	-	2	12	28	10	18	-
SIZE	#4	-	#5	#4	#5	#4	#6	-
C/C	18"	-	9"	12"	12"	12"	9"	-
LENGTH	6'-9"	-	7'	7'	6'-9"	6'-9"	15'	-
DEPTH	8' - 0" DC							
QUANTITY	8	-	6	12	24	10	22	-
SIZE	#4	-	#5	#4	#5	#4	#6	-
C/C	18"	-	9"	12"	12"	12"	9"	-
LENGTH	8'-3"	-	7'	7'	8'-3"	8'-3"	15'	-
DEPTH	9' - 0" DC							
QUANTITY	8	-	10	12	28	10	24	-
SIZE	#4	-	#5	#4	#5	#4	#6	-
C/C	18"	-	9"	12"	12"	12"	9"	-
LENGTH	9'-3"	-	7'	7'	9'-3"	9'-3"	15'	-
DEPTH	10' - 0" DC							
QUANTITY	8	-	12	12	28	10	28	-
SIZE	#4	-	#5	#4	#5	#4	#6	-
C/C	18"	-	9"	12"	12"	12"	9"	-
LENGTH	10'-3"	-	7'	7'	10'-3"	10'-3"	15'	-
DEPTH	11' - 0" DC							
QUANTITY	8	-	14	12	28	10	18	28
SIZE	#4	-	#5	#4	#5	#4	#6	#4
C/C	18"	-	9"	12"	12"	12"	9"	9"
LENGTH	11'-3"	-	7'	7'	11'-3"	11'-3"	15'	4'-6"

(CONTINUED ON SHEET 4 OF 6)

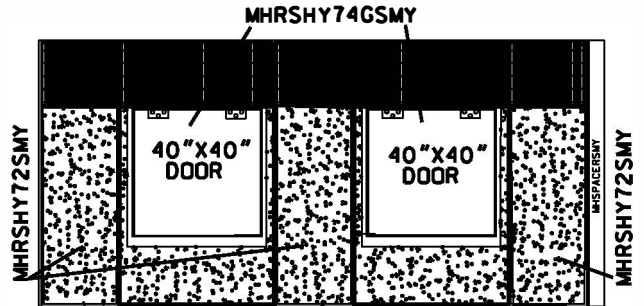
REINFORCEMENT FOR
6' X 14' MANHOLE

MANHOLE WALLS REINFORCING SCHEDULE
(ALL WALLS ARE 8" THICK)

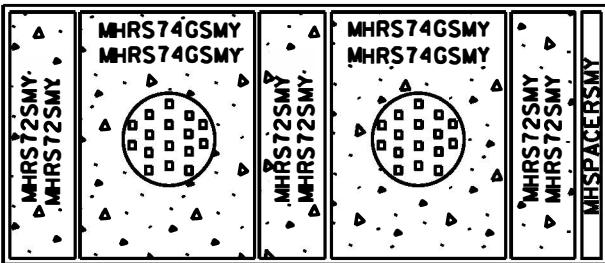
ROD NO.	3	4	5	6	7	8	9	10
DEPTH	12' - 0" DC							
QUANTITY	8	-	18	12	28	10	32	32
SIZE	#4	-	#5	#4	#5	#4	#6	#4
C/C	18"	-	9"	12"	12"	12"	9"	9"
LENGTH	12'-3"	-	7'	7'	12'-3"	12'-3"	15'	4'-6"



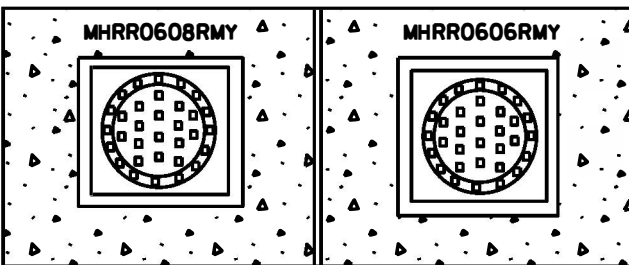
MH0614VS
MH0614VPS (SEE NOTE 2)



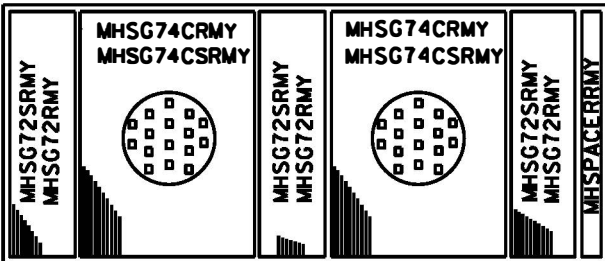
MH0614VSHY (HYBRID GRATED/CONCRETE SLABS)
(SEE NOTE 3 BELOW)



MH0614S MH0614SFS
MH0614PS MH0614SFPS (SEE NOTE 2)



MH0614RR



MH0614VR
MH0614VRS (SEE NOTE 1)

NOTES:

1. ENGINEERING ASSEMBLY MH0614VRS SHALL BE CALLED FOR WHEN A ROADWAY MANHOLE IS TO BE LOCATED IN THE SIDEWALK. COMPATIBLE UNITS MHSG74CRMY AND MHSG72RMY ARE REPLACED BY MHSG74CSRMY AND MHSG72SRMY FOR ENGINEERING ASSEMBLY MH0614VRS.
2. WHEN ENGINEERING ASSEMBLIES MH0614VPS, MH0614PS OR MH0614SFPS ARE REQUIRED THE SIDEWALK SLABS ARE REPLACED WITH THE PAVER PANS OF THE CORRESPONDING CONSTRUCTION.
3. SPECIAL MANHOLE ROOF TYPE WITH UNIQUE HYBRID VENTED PANELS. COMPARABLE TO MH0614VS AND MH0614VPS WITH RESPECT TO TRANSFORMER COOLING, BUT WALKING SURFACE IS DIFFERENT. MAXIMUM TRANSFORMER SIZE THAT CAN BE INSTALLED WITH THIS ROOF DESIGN IS 500KVA.

6' X 14' MH ENGINEERING ASSEMBLIES BREAKDOWN

ENGINEERING ASSEMBLY BREAKDOWN FOR 6' - 0" X 14' - 0" MANHOLES

QUANTITY										DESIGNATION	DESCRIPTION	REF. DWG.	STOCK NO.	CAT ID
2	2	2	2	2	2	2	2			MHC28MY	MH COVER 28" ML CO	0431	9721-0637	0001655721
										MHDACMY	MH DBL ACT COVER ML CO	0434	9721-0640	0001655724
										MHDAFRMY	MH DBL ACT COVER FR ROADWAY ML CO	0427	9721-0611	0001655705
								1	1	MHRF0614RMY	MH RF FRAME 6'X14' ROADWAY ML CO	1164	9721-0220	0001655664
1	1	1	1						1	MHRF0614SMY	MH RF FRAME 6'X14' SIDEWALK ML CO	1184	9721-0208	0001655654
									1	MHRR0606RMY	MH RF RECESSED ROOF 6'X6' ROADWAY ML CO	1141	9721-0564	0001655691
									1	MHRR0608RMY	MH RF RECESSED ROOF 6'X8' ROADWAY ML CO	1143	9721-0565	0001655692
			3						3	MHRS72SMY	MH RF SLAB 7'X2' SIDEWALK ML CO	UG-6393	9721-0648	0001655730
									3	MHRSHY72SMY	MH RF HYBRID SLAB 7'X2' SIDEWALK ML CO	UG-6393	N/A	0001668075
		2							2	MHRS74CSMY	MH RF SLAB 7'X4' SAC SIDEWALK ML CO	UG-6400	9721-0662	0001655739
									2	MHRS74GSMY	MH RF SLAB 7'X4' DR GRT SIDEWALK ML CO	UG-6400	9721-0663	0001655740
									2	MHRSHY74GSMY	MH RF SLAB 7'X4' SOLID DOOR VENTED PANEL	UG-6400	N/A	0001668064
3	3	3								MHRP72SMY	MH RF SLAB PLAN 7'X2' SIDEWALK ML CO	UG-6393	9721-0214	0001655660
2	2									MHRP74CSMY	MH RF SLAB PLAN 7'X4' SAC SIDEWALK ML CO	UG-6400	9721-0223	0001655667
			2							MHRP74GSMY	MH RF SLAB PLAN 7'X4' DR GRT SIDEWALK ML CO	UG-6400	9721-0221	0001655665
									3	MHSG72SRMY	MH SLAB GRT 7'X2' SP ROADWAY ML CO	1163	9721-0238	0001655667
									3	MHSG72RMY	MH SLAB GRT 7'X2' ROADWAY ML CO	1163	9721-0620	0001655708
									2	MHSG74CSRMY	MH SLAB GRT 7'X4' SAC SP ROADWAY ML CO	1351	9721-0659	0001655736
									2	MHSG74CRMV	MH SLAB GRT 7'X4' SAC ROADWAY ML CO	1351	9721-0658	0001655735
									1	MHSPACERRMY	MH SPACER FOR ROADWAY MH ML CO	1386	9721-0668	0001655744
1	1	1	1						1	MHSPACERSMY	MH SPACER FOR SIDEWALK MH ML CO	1386	9721-0669	0001655745
1	1								1	MH0614MY	MH 6X14X6.5 DC ML CO	UG-6425	N/A	N/A
		1	1	1					1	MH0614VMY	MH 6X14X10 DC ML CO	UG-6425	N/A	N/A
DESCRIPTION														
										MH0614VS	MH 6X14 VENT SIDEWALK TYPE			
										MH0614VSHY	MH 6X14 VENTED HYBRID SIDEWALK TYPE			
										MH0614SFS	MH 6X14 SWITCH/FUSE SIDEWALK TYPE			
										MH0614VR	MH 6X14 VENT ROADWAY TYPE			
										MH0614RR	MH 6X14 RECESSED ROADWAY TYPE			
										MH0614VRS	MH 6X14 VENT ROADWAY FOR SIDEWALK TYPE			
										MH0614VPS	MH 6X14 VENT PAVERS SIDEWALK TYPE			
										MH0614SFPS	MH 6X14 SWITCH/FUSE PAVERS SIDEWALK TYPE			
										MH0614S	MH 6X14 SIDEWALK TYPE			
										MH0614PS	MH 6X14 PAVERS SIDEWALK TYPE			